

**2014-15
DIVISION I
REVENUE
DISTRIBUTION
PLAN**

academic enhancement fund
basketball fund
broad-based distributions

- sports sponsorship
- grants-in-aid

conference grants
student assistance fund

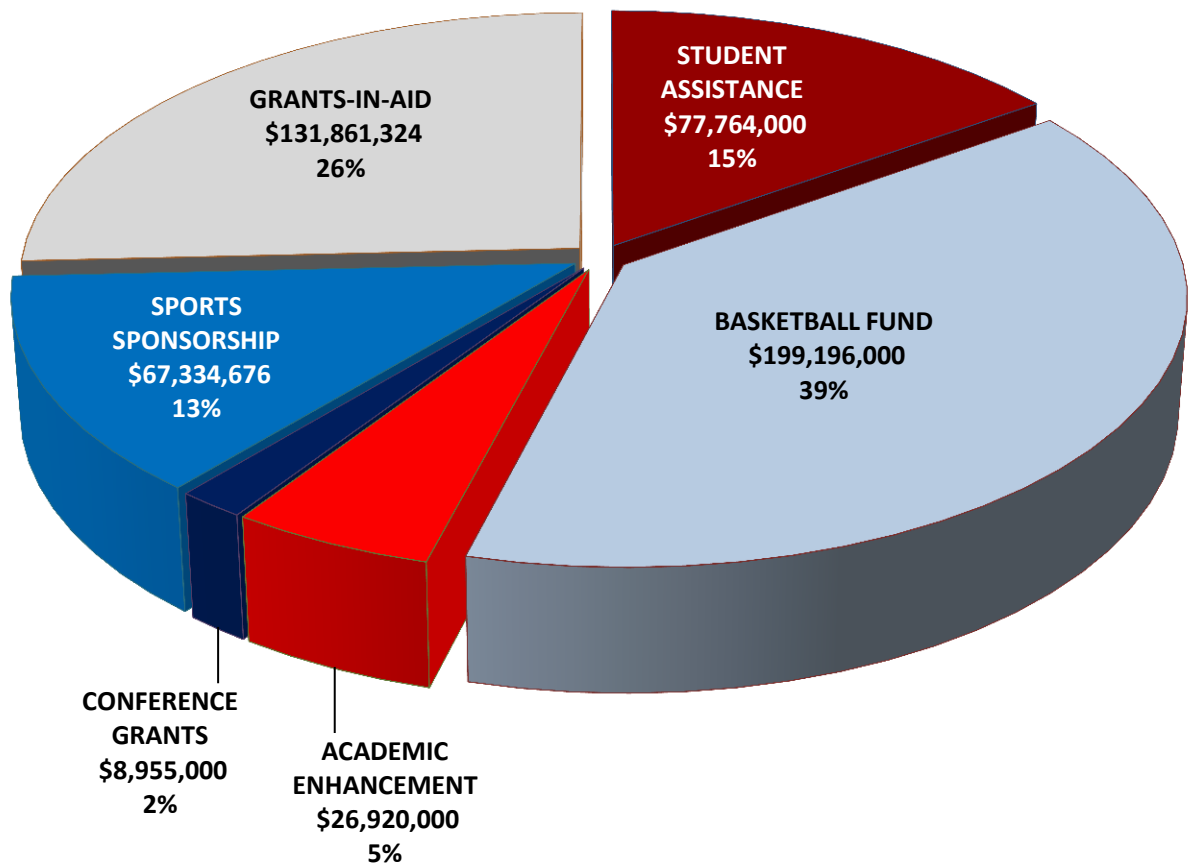


REVENUE DISTRIBUTION | schedule and revenue amounts

2014-15 REVENUE DISTRIBUTION SCHEDULE	
FUND:	DATE:
Basketball Fund	April 15
Academic Enhancement Fund	June 10
Conference Grants	June 17
Sports Sponsorship	July 22
Grants-in-Aid	August 5
Student Assistance Fund	August 19

2014-15 REVENUE DISTRIBUTION AMOUNTS	
FUND:	AMOUNT:
Basketball Fund	\$199,196,000
Academic Enhancement Fund (including Supplemental Support)	\$ 26,920,000
Conference Grants	\$ 8,955,000
Sports Sponsorship	\$67,334,676
Grants-in-Aid	\$131,861,324
Student Assistance Fund	\$77,764,000

2014-15 Revenue Distribution Plan TOTAL: \$512,031,000



ACADEMIC ENHANCEMENT FUND | distribution

The Academic Enhancement Fund is distributed equally to active Division I institutions. The fund is intended for enhancement of academic-support programs for Division I student-athletes. Each active Division I institution will receive approximately \$74,800 in June 2015. In addition to funding direct benefits to student-athletes provided in accordance with the Student-Athlete Assistance Fund guidelines, the Academic Enhancement Fund will continue to allow spending on academic support salaries and benefits and capital improvements that enhance the academic services. The institution is encouraged to consider using this fund for the provision of other direct benefits to student-athletes that enhance student-athlete welfare. For research purposes only, institutions report on how the funds are used to enhance their academic programs and services for student-athletes. Among the common uses are tutorial services, equipment (e.g., laptops), supplies and additional personnel.



Additionally, \$1,097,000 of the Academic Enhancement Fund distribution is set aside and is allocated to the Division I Academic Performance Program (APP) and Supplemental Support Fund (SSF) which was established to support campus-based initiatives designed to foster student-athlete academic success at eligible limited resource institutions. The SSF also supports efforts to improve team Academic Progress Rates (APR) and Graduation Success Rates (GSR). Eligibility for the SSF is determined by the NCAA based on APR and GSR rankings. The SSF provides grants based on proposals from

institutions with progress toward degree success, including innovative solutions and their efforts towards increasing student-athlete retention.

Newly active Division I institutions will receive a distribution from the Academic Enhancement Fund within their first year. For example, if an institution becomes an active Division I member as of September 1, 2014, they will receive a distribution in June 2015.

Upon the unanimous approval and authorization from the president or chancellor of each institution within a conference, funds may be sent to the conference office rather than to individual institutions. Every year this action requires written notification of the unanimous approval from the conference office to the NCAA national office prior to distribution. Funds sent to the institutions will be addressed to the attention of the president or chancellor. A copy of the covering memorandum will be addressed to the conference commissioner, director of athletics, senior compliance administrator and senior woman administrator. Email addresses for the above mentioned individuals will be captured using [The NCAA Directory](#). Please update your membership contact information to ensure proper delivery.

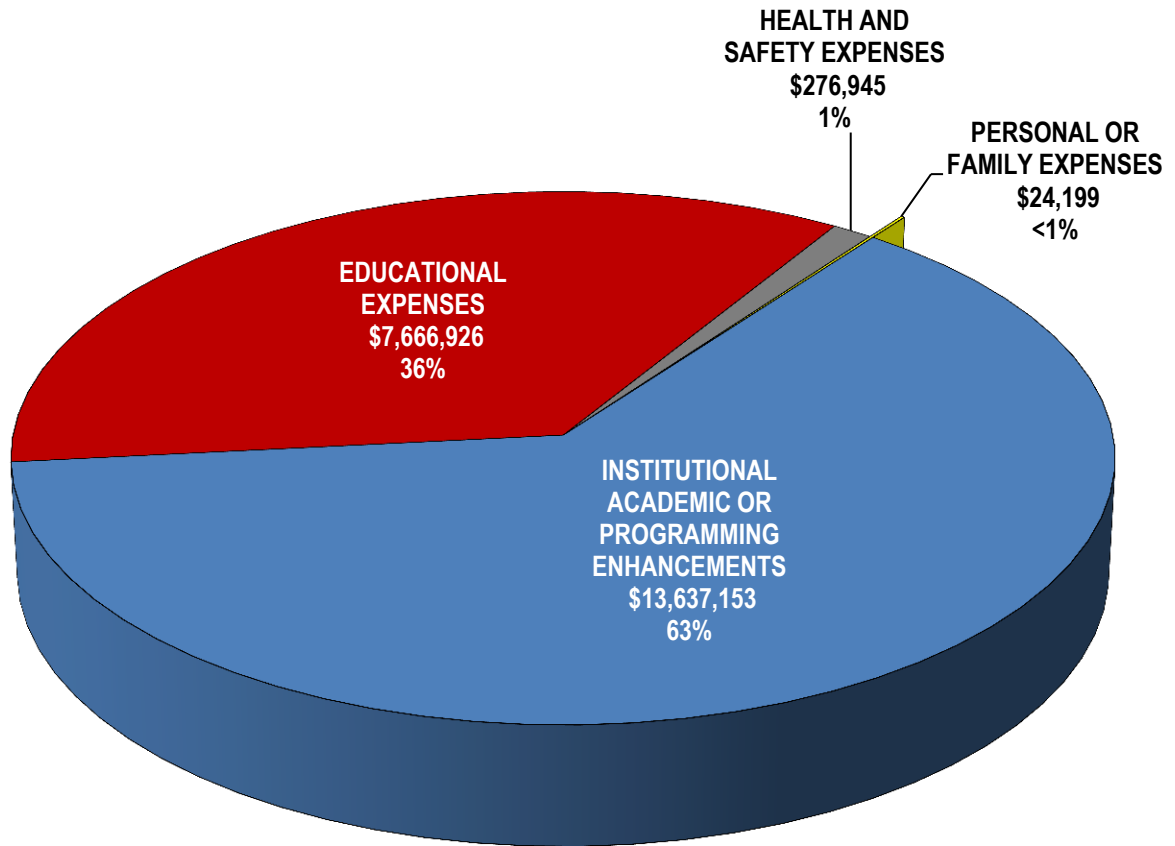
ACADEMIC ENHANCEMENT FUND | distribution

CONFERENCE	2009-10	2010-11	2011-12	2012-13	2013-14
America East	578,817	599,841	619,830	634,968	581,912
American Athletic *	1,029,008	1,066,384	1,101,920	1,058,280	727,390
Atlantic 10	900,382	933,086	964,180	1,128,832	945,607
Atlantic Coast	771,756	799,788	826,440	846,624	1,091,085
Atlantic Sun	578,817	599,841	688,700	634,968	654,651
Big 12	771,756	799,788	688,700	705,520	727,390
Big East					727,390
Big Sky	578,817	599,841	619,830	776,072	800,129
Big South	578,817	599,841	688,700	846,624	872,868
Big Ten	707,443	733,139	826,440	846,624	872,868
Big West	578,817	599,841	619,830	705,520	654,651
Colonial Athletic	771,756	799,788	826,440	776,072	654,651
Conference USA	771,756	799,788	826,440	846,624	1,163,824
Great West	-	-	344,350	352,760	-
Horizon League	643,130	666,490	688,700	634,968	654,651
Independents	450,191	533,192	206,610	141,104	72,739
Ivy League	514,504	533,192	550,960	564,416	581,912
Metro Atlantic	643,130	666,490	688,700	705,520	800,129
Mid-American	771,756	799,788	826,440	846,624	872,868
Mid-Eastern	707,443	799,788	895,310	917,176	945,607
Missouri Valley	643,130	666,490	688,700	705,520	727,390
Mountain West	578,817	599,841	550,960	634,968	800,129
Northeast	707,443	733,139	757,570	846,624	727,390
Ohio Valley	643,130	666,490	688,700	846,624	872,868
Pacific-12	643,130	666,490	826,440	846,624	872,868
The Patriot League	514,504	533,192	550,960	564,416	727,390
Southeastern	771,756	799,788	826,440	987,728	1,018,346
Southern	771,756	799,788	826,440	846,624	800,129
Southland	707,443	799,788	826,440	705,520	872,868
Southwestern	643,130	666,490	688,700	705,520	727,390
Sun Belt	836,069	799,788	826,440	776,072	727,390
The Summit League	643,130	666,490	688,700	634,968	509,173
West Coast	514,504	533,192	619,830	634,968	727,390
Western Athletic	578,817	599,841	550,960	705,520	581,912
TOTAL	\$21,544,855	\$22,460,713	\$24,304,020	\$24,410,992	\$25,094,955

*Prior to July 1, 2013, this conference's legal entity was known as the Big East.

Note: The amounts above do not include supplemental support funds granted to selected Division I institutions.

ACADEMIC ENHANCEMENT FUND | 2012-13 reported uses



The basketball fund is distributed to active Division I conferences based on their performance in the Division I Men's Basketball tournament over a six-year rolling period. In 2014-15, each basketball unit will be approximately \$255,380 for a total distribution of \$199.2 million and will be based on units earned from 2009 to 2014. Independent institutions receive a full unit based on its tournament participation over the same rolling six-year period. In mid-April, the basketball fund is sent to conferences, addressed to the attention of the conference commissioner. Independent institutions will receive the fund addressed to the attention of the president or chancellor. Email addresses for the above mentioned individuals will be captured using [The NCAA Directory](#). Please update your membership contact information to ensure proper delivery.

If a new member participates in the Division I Men's basketball tournament in March-April 2015, the units for participants will be included in the 2015-16 basketball distribution.

One unit is awarded to each institution participating in each game, except the championship game. Units are retained by the conference in which they are earned.



For the purpose of distributing the basketball fund, a conference is defined as an entity that is comprised of at least six member institutions that are classified as active Division I for eight preceding academic years.

The following policies also apply when a conference's membership changes or realignment occurs:

- A. If an institution leaves a conference and realigns with another conference or becomes independent, while the former conference remains in operation, the units previously earned by the institution remain with the former conference.
- B. If an independent institution joins a conference, it retains the units it earned as an independent prior to the date it elected to join the conference; any units the institution earns subsequent to that date accrue to the conference.
- C. If a conference disbands, each institution retains the units it earned in the basketball fund.
- D. If an institution leaves a conference and the conference falls below the six-member requirement, the units remain with the conference for a one-year period. However, if the conference then later disbands, those units return to the basketball fund.
- E. If 50 percent or more of the member institutions in a given conference leave the conference simultaneously and the remaining conference membership falls below six member institutions, the conference shall be considered disbanded and each member institution shall retain the units it earned in the basketball fund as if the conference had in fact disbanded.

No conference will lose all of its units if it is represented in the tournament by an institution that later is declared

ineligible. In this situation, the number of units in the basketball pool earned by the institution would be reduced to one. [By way of example, assume that Conference A is represented in the tournament by only one institution (the automatic qualifier), and that it advances to the Final Four, thereby earning five units. If the institution subsequently is declared ineligible, the number of units will be reduced to one. In another scenario, assume that the conference is represented by two institutions (one automatic qualifier and an at-large team), and one of the institutions subsequently is declared ineligible. The ineligible institution's units will be completely vacated; the units earned by the other institution will be unaffected.]

Conferences are encouraged, but not required, to distribute the basketball fund equally among all member institutions.

BASKETBALL FUND | distribution

CONFERENCE	2009-10	2010-11	2011-12	2012-13	2013-14
America East	1,555,443	1,677,648	1,453,224	1,718,596	1,750,742
American Athletic*	23,109,436	24,925,057	27,369,046	28,725,102	30,763,031
Atlantic 10	6,443,977	5,751,936	7,023,915	8,101,952	10,504,449
Atlantic Coast	18,220,902	18,214,465	17,680,888	18,168,013	17,507,416
Atlantic Sun	1,333,237	1,437,984	1,453,224	1,473,082	2,000,848
Big 12	17,109,871	18,933,457	18,649,704	20,623,150	20,508,687
Big Sky	1,555,443	1,677,648	1,695,428	1,473,082	1,500,636
Big South	1,555,443	1,677,648	1,937,632	1,964,110	1,750,742
Big Ten	15,332,222	18,454,129	18,165,296	20,377,636	22,259,429
Big West	1,999,855	1,917,312	1,453,224	1,473,082	1,500,636
Colonial Athletic	2,888,680	3,355,296	5,328,487	4,419,246	4,251,801
Conference USA	8,443,833	6,950,256	5,086,283	4,419,246	4,001,695
Horizon League	3,333,092	4,553,616	5,086,283	4,910,274	4,251,801
Ivy League	1,333,237	1,917,312	1,937,632	1,964,110	2,250,953
Metro Atlantic	1,999,855	1,917,312	1,937,632	2,209,623	2,250,953
Mid-American	1,333,237	1,917,312	1,695,428	2,209,623	2,250,953
Mid-Eastern	1,333,237	1,677,648	1,453,224	1,718,596	2,000,848
Missouri Valley	4,444,122	1,437,984	4,359,671	3,191,678	4,001,695
Mountain West	3,999,710	5,032,944	5,812,895	6,628,870	7,503,178
Northeast	1,555,443	5,032,944	1,695,428	1,718,596	1,750,742
Ohio Valley	1,555,443	1,677,648	2,179,836	2,455,137	2,501,059
Pacific-12	14,665,604	16,057,489	16,227,665	14,485,308	13,255,615
Patriot League	1,777,649	1,917,312	1,695,428	1,718,596	1,750,742
Southeastern	15,110,016	15,578,161	16,227,665	15,221,849	13,755,827
Southern	1,999,855	2,156,976	2,179,836	2,209,623	2,250,953
Southland	1,555,443	1,677,648	1,937,632	1,718,596	1,750,742
Southwestern	1,333,237	1,677,648	1,695,428	1,718,596	1,750,742
Sun Belt	2,222,061	2,396,640	2,422,040	2,700,651	3,001,271
The Summit League	1,333,237	1,437,984	1,453,224	1,473,082	1,500,636
West Coast	3,555,298	4,553,616	4,359,671	4,910,274	5,752,437
Western Athletic	3,110,886	2,875,968	2,422,040	2,209,623	1,750,742
TOTAL	\$167,099,004	\$180,466,998	\$184,075,009	\$188,309,002	\$193,582,001

*Prior to July 1, 2013, this conference's legal entity was known as the Big East.

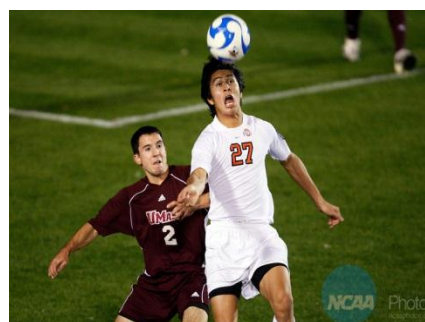
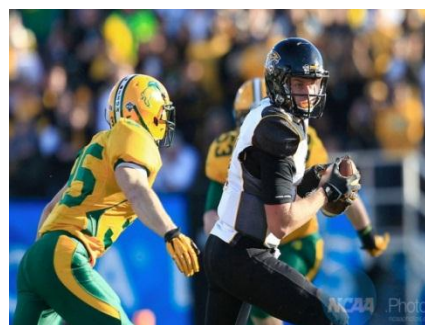
The broad-based distribution is sent to all active Division I institutions on the basis of the number of varsity sports sponsored (weighted one-third, totaling \$67.3 million) and athletic grants-in-aid awarded (weighted two-thirds, totaling \$131.8 million).

The Sports Sponsorship payment is sent in late July; the Grants-in-Aid payment is sent in mid-August. Upon the unanimous approval and authorization from the president or chancellor of each institution within a conference, funds may be sent to the conference office rather than to individual institutions. Every year this action requires written notification of the unanimous approval from the conference office to NCAA national office prior to distribution. Funds sent to the institution will be addressed to the attention of the president or chancellor. A copy of the covering memorandum will be addressed to the conference commissioner, director of athletics, senior compliance administrator and senior woman administrator. Email addresses for the above mentioned individuals will be captured using [The NCAA Directory](#). Please update your membership contact information to ensure proper delivery.

As of October 25, 2014, newly active Division I institutions shall qualify to begin receiving revenue distributions related to Sports Sponsorship and Grants-in-Aid after its third academic year as an active Division I member is complete (Bylaw 20.5.4). The broad-based calculations are based on prior year information which in this case would be the institution's second active year as a Division I institution. For example, the August 2015 Grants-in-Aid distribution will be based on the 2013-14 academic year information that will be submitted to the NCAA national office in May 2015. Division I institutions which are newly active in 2013-14 will not be eligible for this distribution until August 2016.

SPORTS SPONSORSHIP

An institution receives a unit for each sport sponsored beginning with the 14th sport. (The minimum requirement for Division I membership is 14.) Only sports in which the NCAA conducts championship competition (which meet the minimum contests and participants requirements of Bylaw 20.9.6.3) and emerging sports for women are counted. In the 2013-14 distribution, for sports sponsored beginning with the 14th, an institution received approximately \$33,348 per sport (i.e., an institution sponsoring 16 total sports received approximately \$100,044; an institution sponsoring 23 total sports received approximately \$333,480).



GRANTS-IN-AID

The Grants-in-Aid distribution is based on the number of athletic grants awarded in the prior academic year by each institution (based on full-time equivalencies), with an escalating multiplier which favors schools that provide more athletic grants.

The unit value will be determined by the total number of athletic grants awarded by all active Division I institutions. Last year, the “unit value” or “point amount” was \$291.31.

EXAMPLE

Grant Multiplier		Grant Equivalents	Total Pt. Value	Pt. Amount	Grants-in-Aid Distribution
1-50	1	50	50	\$ 291.31	\$ 14,565.50
51-100	2	50	100	\$ 291.31	\$ 29,131.00
101-150	10	50	500	\$ 291.31	\$ 145,655.00
150+	20	29.45	589	\$ 291.31	\$ 171,581.59
		179.45	1239		\$ 360,933.09

- A. The Grants-in-Aid distribution is based on data from the preceding academic year (e.g., the 2014-15 distribution is based on 2013-14 data).
- B. The Grants-in-Aid data is drawn from squad lists submitted in late May. The squad lists calculate the revenue distribution equivalencies by sport and in aggregate. (Athletic Grant Amount divided by the Full Grant Amount).
- C. Full Grant Amount should be entered as a full year of tuition, not semester.
- D. Student-athletes are to be counted once and should not receive a revenue distribution equivalency greater than 1.00.
- E. Athletic grants are countable only in sports in which the NCAA conducts championships competition, emerging sports for women and FBS football.
- F. Grants-in-Aid are countable in NCAA sports that do not meet the minimum contests and participants requirement of Bylaw 20.9.6.3.
- G. Institutions providing grants to student-athletes listed on the squad list as “Exhausted eligibility (fifth-year)” or “Medical” receive credit in the Grants-in-Aid component.
- H. The athletic aid equivalency cannot exceed maximum equivalency limits. However, the total revenue distribution equivalency can exceed maximum equivalency limits due to the additional exhausted eligibility and Medical equivalencies (reference Bylaw 15.5.3.1.)
- I. Institutions are responsible to submit accurate data to enhance the integrity of the Grants-in-Aid Revenue Distribution. Using Compliance Assistance will contribute to data integrity.

Please reference the 2014-15 Division I Manual, Article 15, Financial Aid for additional information.

SPORTS SPONSORSHIP | distribution

CONFERENCE	2009-10	2010-11	2011-12	2012-13	2013-14
America East	1,835,570	1,831,642	1,878,306	1,894,066	1,533,999
American Athletic*	3,370,225	3,534,746	3,525,942	3,422,606	2,267,650
American Southwest	-	-	65,905	-	-
Atlantic 10	2,557,761	2,667,128	2,603,266	2,890,942	2,401,040
Atlantic Coast	3,279,953	3,599,015	3,657,754	3,754,903	4,401,910
Atlantic Sun	692,099	1,092,557	922,676	1,096,564	1,167,172
Big 12	2,076,301	2,217,251	1,845,354	1,761,150	1,767,433
Big East	-	-	-	-	1,667,391
Big Sky	782,375	835,485	856,769	996,875	1,300,565
Big South	993,012	1,156,825	1,482,872	1,595,003	1,800,781
Big Ten	3,851,686	4,081,029	4,514,524	4,585,632	4,702,041
Big West	1,624,931	1,735,240	1,647,637	1,827,607	1,734,087
Colonial Athletic	1,986,029	2,152,982	2,174,880	2,093,441	1,734,086
Conference USA	1,384,201	1,446,030	1,482,871	1,561,775	2,067,560
Great West	-	-	329,527	365,520	-
Horizon League	1,233,746	1,381,763	1,449,919	1,262,710	1,333,912
Independents	150,456	321,340	263,622	199,375	166,739
Ivy League	4,333,148	4,595,173	4,745,195	4,552,405	4,568,649
Metro Atlantic	1,745,296	1,831,641	1,845,352	1,927,295	2,234,304
Mid-American	1,745,297	1,863,774	1,911,258	1,927,296	1,934,171
Mid-Continent	-	1,060,422	-	-	-
Mid-Eastern	932,830	931,886	1,021,533	1,129,793	1,200,522
Missouri Valley	932,831	2,056,580	955,630	996,875	1,033,783
Mountain West	1,745,295	2,634,992	1,878,305	1,794,378	2,000,866
Northeast	2,527,670	996,155	2,800,981	2,857,713	2,634,476
Ohio Valley	932,832	2,699,263	955,628	1,096,564	1,267,216
Pacific-12	2,527,669	1,831,642	2,932,793	3,057,089	3,101,345
Patriot League	2,557,760	2,763,531	2,833,935	2,857,713	3,334,779
Southeastern	2,347,121	2,538,594	2,603,266	3,090,321	3,101,345
Southern	1,504,566	1,735,238	1,713,542	1,794,379	1,600,693
Southland	662,008	771,216	988,582	863,960	1,000,434
Southwestern	1,143,471	1,285,360	1,186,298	1,063,334	1,000,434
Sun Belt	1,324,018	1,317,494	1,416,966	1,362,399	1,100,476
The Summit League	1,143,470	1,285,362	1,087,440	996,878	1,067,128
West Coast	662,010	706,948	988,582	1,163,023	1,433,955
Western Athletic	1,113,380	1,028,288	790,865	930,420	867,043
TOTAL	\$55,699,017	\$60,154,950	\$61,357,975	\$62,770,004	\$64,527,985

*Prior to July 1, 2013, this conference legal entity was known as the Big East.

GRANTS-IN-AID | distribution

CONFERENCE	2009-10	2010-11	2011-12	2012-13	2013-14
America East	2,549,433	2,813,281	2,882,739	2,921,281	2,495,448
American Athletic*	7,294,997	7,951,378	8,046,844	9,938,579	7,266,728
Atlantic 10	2,654,394	2,906,675	2,979,265	2,384,087	2,508,361
Atlantic Coast	8,966,087	9,511,869	9,419,427	9,637,497	12,123,158
Atlantic Sun	322,239	428,954	398,666	504,785	624,086
Big 12	8,032,880	8,700,244	7,625,779	7,218,960	7,215,341
Big East	-	-	-	1,058,739	1,149,683
Big Sky	2,086,397	2,168,841	2,256,682	2,758,768	3,541,309
Big South	1,390,721	1,526,972	1,711,320	1,859,059	2,157,366
Big Ten	11,048,658	11,713,716	12,911,469	12,853,977	13,392,569
Big West	1,693,939	1,711,353	1,695,940	2,189,631	2,288,817
Colonial Athletic	3,529,998	4,007,822	3,800,602	4,097,223	2,923,661
Conference USA	6,258,221	6,989,555	7,077,237	4,596,643	7,742,029
Great West	-	-	128,170	302,944	-
Horizon League	1,025,412	1,085,739	1,035,222	1,030,855	1,217,356
Independents	51,696	180,118	96,718	46,401	37,445
Ivy League	-	-	-	-	-
Metro Atlantic	334,045	373,525	389,064	408,802	777,547
Mid-American	7,034,489	7,461,407	7,742,747	7,729,234	7,868,283
Mid-Continent	-	1,999,967	2,102,741	-	-
Mid-Eastern	2,000,664	2,357,411	2,283,175	2,060,333	2,153,039
Missouri Valley	2,115,177	5,993,449	5,153,252	2,343,278	2,364,720
Mountain West	5,024,351	1,469,396	1,570,590	5,115,742	6,220,751
Northeast	1,329,930	2,291,674	2,534,455	1,556,780	1,251,246
Ohio Valley	2,214,795	8,190,013	9,368,648	2,664,925	2,893,319
Pacific-12	7,883,121	2,813,281	1,338,431	9,661,381	9,612,589
Patriot League	1,178,073	1,279,246	8,894,409	1,276,556	1,752,171
Southeastern	8,276,070	8,866,912	2,479,748	10,615,630	10,605,491
Southern	2,058,035	2,216,178	3,229,297	2,592,538	2,624,452
Southland	2,312,765	2,335,866	1,528,034	2,674,674	2,913,287
Southwestern	1,464,761	1,487,995	5,231,581	1,558,083	1,881,857
Sun Belt	4,730,112	5,236,979	1,718,540	5,335,347	4,231,599
The Summit League	1,458,847	1,774,211	1,291,609	1,321,383	1,908,058
West Coast	413,266	453,928	3,923,965	1,360,509	1,481,819
Western Athletic	4,663,881	4,533,653	2,979,265	3,884,266	1,334,922
TOTAL	\$111,397,454	\$120,018,327	\$122,846,366	\$125,558,890	\$128,558,507

*Prior to July 1, 2013, this conference legal entity was known as the Big East.

CONFERENCE GRANTS | description

The conference grant fund is distributed to Division I men's and women's basketball-playing conferences that employ a full-time administrator and are eligible for automatic qualification into the Division I men's and women's basketball championships. The fund is intended for enhancement of conference programs as detailed below. Each active Division I conference will receive approximately \$279,800 in June 2015, less the agreed upon amount of \$6,875 that will be remitted to the regional officiating advisors program, regardless of whether the conference is granted automatic qualification.

These grant funds must be used to maintain, enhance or implement programs and services in each of the following areas:

- A. Improvement of men's and women's officiating programs in all sports, as opposed to in men's and women's basketball only.
- B. Enhancement of conference compliance and enforcement programs.
- C. Heightening the awareness of athletics staff and student-athletes to programs associated with drug use, and assisting coaches, athletics administrators and student-athletes in this regard.
- D. Enhancement of opportunities: employment, professional development, career advancement and leadership/management training in intercollegiate athletics for ethnic minorities.
- E. Development of conference gambling education programs.

The administration of the grant will take into consideration the diverse nature of conference structures and allow conferences a reasonable degree of flexibility in constructing their programs. At the same time, adherence to specific criteria and restrictions is required to ensure that the grant funds are used according to the principles below and provide for responsible financial accountability. The general principles guiding the grant are as follows:

- 1. A conference has the authority to determine the amount to allocate to the five aforementioned areas. However, the conference must spend a portion of the grant in all five.
- 2. The funds must be used to enhance existing programs, to maintain programs initiated by the NCAA grant funds or to implement new programs.
- 3. Conferences may establish a "consortium" with one another in one or more of the five areas by pooling grant funds and conducting joint programs, subject to the approval of the Board of Governors.
- 4. A conference may allocate a portion of its grant in the form of subgrants to one or more of its member institutions for specific programs approved by the conference in the areas of drug education and the enhancement of opportunities for ethnic minorities and women.

5. It is assumed that programs provided by the conference in the areas of compliance, enforcement and drug education will serve both men's and women's athletics programs. However, it is possible that in the area of officiating improvement separate programs and services for men and for women may be implemented. If separate officiating programs are implemented, at a minimum, the amounts allocated to the men's and women's programs must be in proportion to the total grant. [For example, Conference A receives \$150,000, of which \$112,500 is by virtue of its men's automatic qualification and \$37,500 for the women's. If the conference determines that it will spend \$60,000 of the conference grant funds on basketball officiating improvement then at least \$15,000 must be allocated to women's basketball officiating (one-fourth, in proportion to the \$37,500/ \$150,000 split).]
6. A conference must allocate its entire grant for programs and services each year. It may not carry over the funds to the next year, unless the NCAA Board of Governors approves an appropriation for subsequent year spend within the above categories; e.g., to allow the purchase of equipment that might be ordered in one fiscal year, but delivered and paid for in the next fiscal year.

Conferences will complete an annual report of uses form. This form outlines the Conference Grant fund's uses within the approved stated areas.

- Enhancement Opportunities – Ethnic Minorities
- Enhancement Opportunities – Women
- Gambling & Compliance
- Men's Officiating
- Women's Officiating
- Drug Education

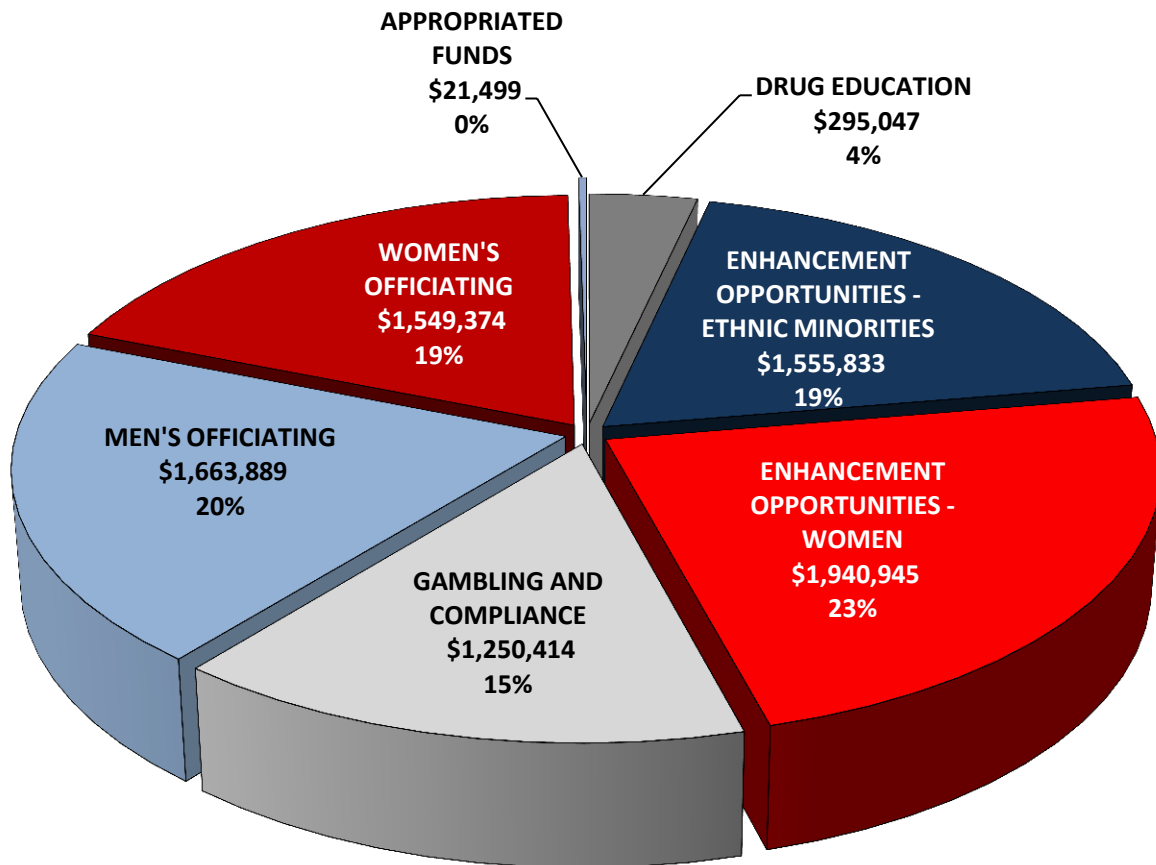
This information is utilized by membership as well as NCAA officiating, Health and Safety and Inclusion groups to increase awareness of membership initiatives.

CONFERENCE GRANTS | distribution

CONFERENCE	2009-10	2010-11	2011-12	2012-13	2013-14
America East	251,097	261,774	259,903	273,096	272,000
American Athletic*	251,097	261,774	259,903	273,096	272,000
Atlantic 10	251,097	261,774	259,903	273,096	272,000
Atlantic Coast	251,097	261,774	259,903	273,096	272,000
Atlantic Sun	251,097	261,774	259,903	273,096	272,000
Big 12	251,097	261,774	259,903	273,096	272,000
Big East	-	-	-	-	272,000
Big Sky	251,097	261,774	259,903	273,096	272,000
Big South	251,097	261,774	259,903	273,096	272,000
Big Ten	251,097	261,774	259,903	273,096	272,000
Big West	251,097	261,774	259,903	273,096	272,000
Colonial Athletic	251,097	261,774	259,903	273,096	272,000
Conference USA	251,097	261,774	259,903	273,096	272,000
Horizon League	251,097	261,774	259,903	273,096	272,000
Ivy League	251,097	261,774	259,903	273,096	272,000
Metro Atlantic	251,097	261,774	259,903	273,096	272,000
Mid-American	251,097	261,774	259,903	273,096	272,000
Mid-Eastern	251,097	261,774	259,903	273,096	272,000
Missouri Valley	251,097	261,774	259,903	273,096	272,000
Mountain West	251,097	261,774	259,903	273,096	272,000
Northeast	251,097	261,774	259,903	273,096	272,000
Ohio Valley	251,097	261,774	259,903	273,096	272,000
Pacific-10	251,097	261,774	259,903	273,096	272,000
Southeastern	251,097	261,774	259,903	273,096	272,000
Southern	251,097	261,774	259,903	273,096	272,000
Southland	251,097	261,774	259,903	273,096	272,000
Southwestern	251,097	261,774	259,903	273,096	272,000
Sun Belt	251,097	261,774	259,903	273,096	272,000
The Patriot League	251,097	261,774	259,903	273,096	272,000
The Summit League	251,097	261,774	259,903	273,096	272,000
West Coast	251,097	261,774	259,903	273,096	272,000
Western Athletic	251,097	261,774	259,903	273,096	272,000
TOTAL	\$7,784,007	\$8,114,994	\$8,277,000	\$8,465,976	\$8,704,000

*Prior to July 1, 2013, this conference legal entity was known as the Big East.

CONFERENCE GRANTS | 2012-13 reported uses



STUDENT ASSISTANCE FUND | description

(Special Assistance Fund and Student-Athlete Opportunity Fund)

The Student Assistance Fund (SAF) is distributed to conference offices in late August and is segregated into two funds; the Special Assistance Fund and the Student-Athlete Opportunity Fund. As a guiding principle, the fund shall be used to assist student-athletes in meeting financial needs that arise in conjunction with participation in intercollegiate athletics, enrollment in an academic curriculum or to recognize academic achievement as determined by conference offices. Accordingly, direct receipt of SAF funds shall not be included in determining the permissible amount of financial aid that a member institution may award to a student-athlete. The fund should not be used to replace existing budget items.

SPECIAL ASSISTANCE FUND

The Special Assistance Fund will be \$16,200,000 in 2014-15 and has three components to the calculation, as follows with the percentage of the fund allocated to each component noted in parentheses:

1. Current year information for Pell grants (70%)
2. Current year submission for grants-in-aid (15%)
3. Current year submission for sports sponsorship (15%)

As an example, the August 2015 Special Assistance Fund distribution will be based on 2014-15 Pell Grant information and 2013-14 grants-in-aid and sports sponsorship information.

STUDENT-ATHLETE OPPORTUNITY FUND

The Student-Athlete Opportunity Fund (SAOF) will be \$59,300,000 in 2014-15. The amount is calculated using the proportion of 'broad-based' distributions. Two thirds of the fund is allocated based on the current year submission for grants-in-aid while the remaining one third is allocated based on the current year submission for sports sponsorship. Beginning with this fiscal year distribution, Division I COI imposed fines collected in the previous fiscal year will be added to the total funds available for SAOF distribution.

All Division I student-athletes are eligible to receive Student Assistance Fund benefits directly or indirectly, including international student-athletes, regardless of whether they are grant-in-aid recipients, have demonstrated need, have either exhausted eligibility or no longer participate due to medical reasons. However, pursuant to NCAA Bylaw 15.2.8.1.2, 15.2.8.1.3, 15.2.8.1.4, prospective student-athletes are not allowed to receive summer financial aid prior to full-time enrollment. Additionally, no prospective student-athlete shall be eligible to receive SAF funds.

Pursuant to NCAA Bylaw 15.01.6.1, member institutions and conferences shall **not** use funds received from the fund for the following:

- A. Salaries and Benefits.
- B. Grants-in-aid (other than summer school) for student-athletes with remaining eligibility.
- C. Capital improvements.
- D. Stipends.
- E. Athletic development opportunities.

1. Fees and other expenses associated with a student-athlete's participation in a sports camp or clinic;
2. Fees and other expenses associated with private sports-related instruction provided to a student-athlete;
3. Fees for other athletic development experiences (e.g., greens fees, batting cage rental); and
4. Expenses associated with a student-athlete's participation in a foreign tour.

The responsibility for oversight and administration of the fund, including interpretations, rests solely with the conferences. The Division I Council establishes the guiding principles of the fund.

A new Division I member institution for 2014-15 will submit Pell grant information for the 2014-15 distribution. They will not have 2013-14 grants-in-aid and sports sponsorship data to submit since they were not an active Division I institution during that year.

A conference may accumulate no more than the total allocation received over the previous two years. Subsequent allocations will be forfeited if that amount is exceeded. Independent institution's funds have been assigned to a conference office for administration based on the same assignment made for administration of the National Letter of Intent in coordination with the conference confirmations received by the NCAA national office regarding conference alignment for the upcoming academic year.

Conferences will be required to report annually, to the NCAA national office, the use of funds in each category, including the number of fund recipients by sport and gender, as well as, the amount and purpose. A student-athlete should only be recorded once in the count of overall reported uses. Included in the report of uses, conferences will report the institution Pell grant information to be used in the calculation of the Special Assistance Fund distribution.

Student Assistance Fund will reference the upcoming conference alignment to calculate the funds. All conferences are required to provide accurate conference alignment to the NCAA national office via reviewing/updating the Membership Database.

STUDENT ASSISTANCE FUND | distribution

(Special Assistance Fund)

CONFERENCE	2009-10	2010-11	2011-12	2012-13	2013-14
America East	338,720	337,973	357,685	334,917	331,701
American Athletic*	714,797	729,804	719,269	616,286	635,621
American Southwest	-	-	5,476	-	-
Atlantic 10	488,065	514,018	542,288	423,178	467,065
Atlantic Coast	590,580	596,405	611,501	798,793	843,875
Atlantic Sun	248,909	234,493	265,038	313,866	277,956
Big 12	675,904	552,011	602,611	606,624	605,258
Big East	-	-	-	269,795	279,737
Big Sky	341,848	370,739	463,916	454,246	552,747
Big South	337,279	399,205	433,333	455,395	440,479
Big Ten	615,802	704,679	741,142	758,284	870,520
Big West	371,718	391,494	468,061	428,337	443,228
Colonial Athletic	442,766	442,196	403,596	299,027	307,905
Conference USA	567,251	595,057	591,203	866,643	814,979
Great West	-	-	134,341	-	-
Horizon League	308,646	296,645	275,976	295,725	307,396
Independents	180,234	168,382	5,634	-	-
Ivy League	316,191	336,102	358,987	330,498	345,698
Metro Atlantic	286,027	282,828	296,532	412,715	423,697
Mid-American	593,401	631,220	684,929	667,570	690,132
Mid-Eastern	506,730	600,994	654,832	783,265	757,243
Missouri Valley	309,094	314,545	353,112	350,364	373,751
Mountain West	412,826	375,692	406,754	543,253	528,756
Northeast	376,171	428,648	445,626	400,458	416,608
Ohio Valley	420,790	450,080	465,315	506,725	542,397
Pacific-12	546,094	648,652	666,730	702,052	724,045
The Patriot League	212,686	231,645	222,876	277,048	286,065
Southeastern	652,591	698,200	823,609	837,271	839,823
Southern	378,892	418,957	441,457	413,738	391,183
Southland	453,442	536,273	497,791	543,891	532,157
Southwestern	739,338	684,958	717,782	750,893	758,557
Sun Belt	617,403	613,383	610,574	502,580	561,056
The Summit League	305,422	303,415	219,002	232,424	277,044
West Coast	173,525	262,764	260,373	322,118	341,875
Western Athletic	428,512	393,393	415,960	309,363	280,876
TOTAL	\$13,951,654	\$14,544,850	\$15,163,311	\$15,807,342	16,249,430

*Prior to July 1, 2013, this conference legal entity was known as the Big East.

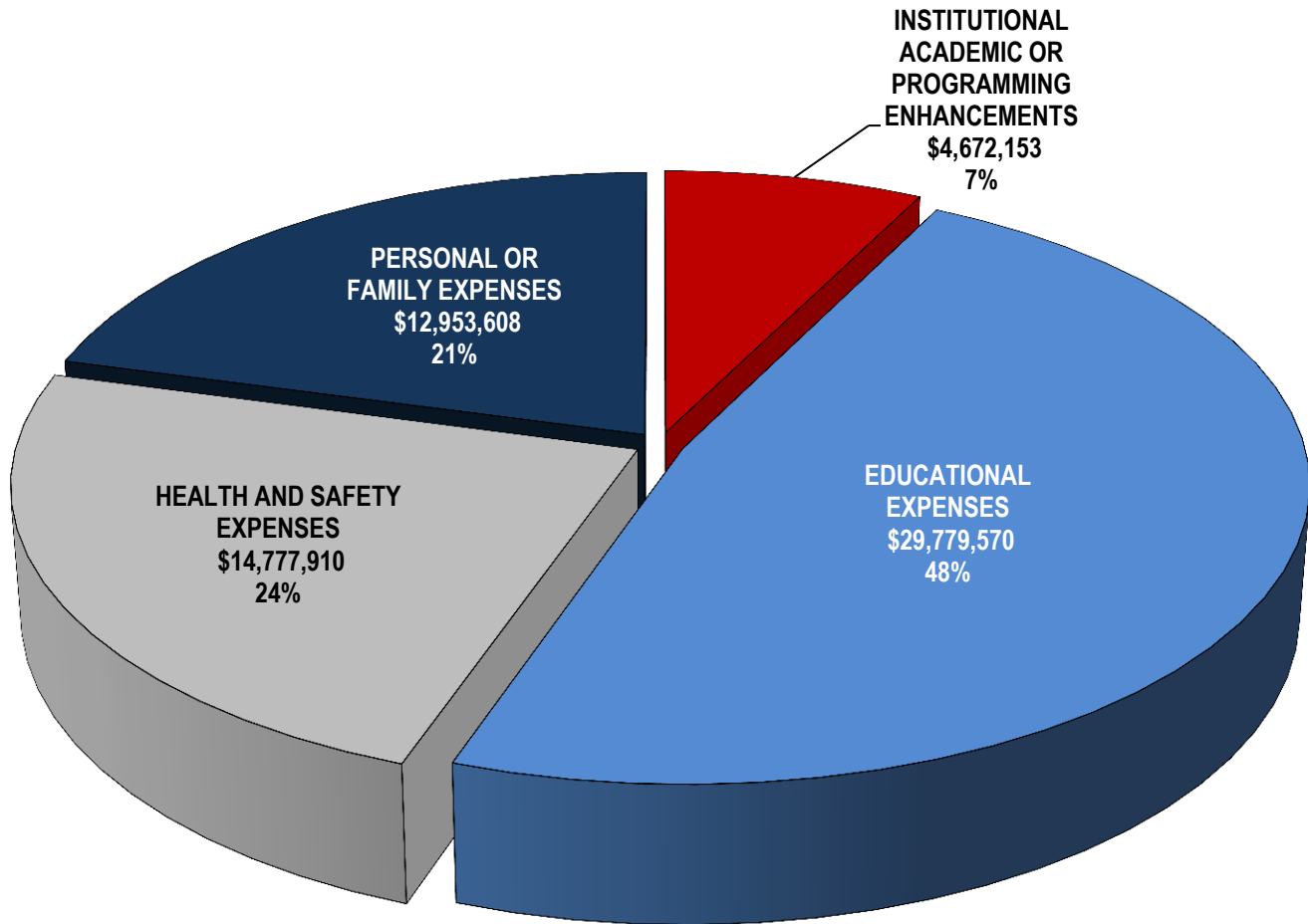
STUDENT ASSISTANCE FUND | distribution

(Student-Athlete Opportunity Fund)

CONFERENCE	2009-10	2010-11	2011-12	2012-13	2013-14
America East	1,052,250	1,166,305	1,323,329	1,220,975	1,236,575
American Athletic*	2,551,440	2,876,274	2,989,036	2,920,441	2,802,653
Atlantic 10	1,253,430	1,403,218	1,665,368	1,475,473	1,600,275
Atlantic Coast	2,925,983	3,279,715	3,622,320	5,158,449	5,094,382
Atlantic Sun	245,322	308,337	318,984	495,908	430,542
Big 12	2,410,401	2,285,734	2,451,686	2,740,671	2,741,498
Big East				819,774	869,980
Big Sky	685,410	751,624	1,002,360	1,148,590	1,637,277
Big South	571,977	752,218	908,780	1,062,586	1,139,320
Big Ten	3,558,466	4,300,287	4,823,931	5,333,161	6,308,878
Big West	798,104	868,363	1,208,791	1,170,746	1,236,427
Colonial Athletic	1,321,342	1,544,762	1,616,937	1,469,122	1,564,185
Conference USA	1,820,909	2,103,357	2,363,537	3,131,919	2,672,840
Great West	-	-	128,455	-	-
Horizon League	544,183	622,780	626,698	769,090	786,276
Independents	56,762	126,881	10,353	-	-
Ivy League	1,057,864	1,175,647	1,342,800	1,422,975	1,428,030
Metro Atlantic	505,242	561,250	629,065	993,238	997,757
Mid-American	2,093,011	2,327,252	2,667,558	2,947,418	2,991,713
Mid-Eastern	701,821	767,290	866,639	978,235	1,028,456
Missouri Valley	728,955	823,051	897,546	1,044,014	1,040,562
Mountain West	1,616,677	1,512,407	1,892,792	2,519,030	2,512,718
Northeast	932,233	1,038,556	1,224,021	1,107,454	1,203,077
Ohio Valley	752,565	823,193	1,018,183	1,144,336	1,273,896
Pacific-12	2,485,110	3,037,052	3,474,931	3,886,764	3,885,740
The Patriot League	903,595	1,024,283	1,169,579	1,591,720	1,573,946
Southeastern	2,534,381	2,848,462	3,799,157	4,186,664	4,186,975
Southern	854,995	993,559	1,130,805	1,262,939	935,979
Southland	699,973	776,602	947,674	1,142,477	1,136,836
Southwestern	627,676	770,369	755,407	805,082	883,640
Sun Belt	1,444,106	1,635,839	1,716,345	1,609,066	1,733,039
The Summit League	624,854	734,840	590,644	700,999	972,165
West Coast	259,547	566,195	634,517	841,141	897,780
Western Athletic	1,376,988	1,387,422	1,233,406	606,652	519,649
TOTAL	\$39,995,572	\$45,193,124	\$51,070,284	\$57,707,109	59,323,066

*Prior to July 1, 2013, this conference legal entity was known as the Big East.

STUDENT ASSISTANCE FUND | 2012-13 reported uses



STUDENT ASSISTANCE FUND AND ACADEMIC ENHANCEMENT| additional information

REPORT OF USES CATEGORIES FOR STUDENT ASSISTANCE AND ACADEMIC ENHANCEMENT FUNDS.

EDUCATIONAL EXPENSES AND FEES

- Summer School
- Fifth or Sixth Year Aid
- Tutoring
- International Student Fees and Taxes
- Professional Program Testing
- Supplies (Expendable or Educational)
- Champs/Life Skills/SAAC
- Other Educational Expenses

HEALTH AND SAFETY EXPENSES

- Insurance Premiums for Student-Athletes
- Medical, Dental or Vision Expenses for Student-Athletes (not covered by another insurance program for student-athletes)
- Other Health and Safety Expenses

PERSONAL OR FAMILY EXPENSES

- Clothing
- Travel
- Other Personal or Family Expenses

INSTITUTIONAL ACADEMIC OR PROGRAMMING ENHANCEMENTS

- Academic Achievement or Graduation Award
- Academic Support Services
- Other Academic or Programming Expenses

FINANCIAL AID TYPES-TOTAL STUDENT-ATHLETES

- Student-Athlete on Full Grant-in-Aid
- Student-Athlete on Partial Grant-in-Aid
- Student-Athlete receiving no Grant-in-Aid
- Student-Athlete receiving Student Assistance Funds with Exhausted Eligibility or Inactive Due to Medical Reason
- Pell Grant Student Athletes
- Non Pell Grant Student Athletes

ACADEMIC ENHANCEMENT FUND REPORT OF USES ADDITIONAL CATEGORIES:

- Capital Improvements/Equipment
- Academic Personnel Compensation