



Jamestown *Presbyterian* News

VOLUME 27 / ISSUE 2
FEBRUARY 2022

From the Pastor's Study: F.R.O.G.

Dear Church family and friends,

Do you know anyone who is passionate about collecting things? I don't mean a random accumulation or hoarding, but a serious, intentional, "always looking for the very best examples" kind of collector? My step-mother was one of those folks. Joan collected frogs. From jade ornaments and blown-glass figurines to clocks and hand towels and throw-rugs, from thimble-sized peepers to bullfrogs bigger than a cantaloupe, frogs were her specialty. When the Lord called her home to heaven, she had more than 9,000 of them. How do we know? She kept a log-book listing every single frog and when and how she obtained it.

Nestled in with about 300 other specimens in a glass-fronted case in her dining room was a small silver frog pin Joan received years ago when she was hospitalized after a terrible car accident. The pin came on a pre-printed card which read F.R.O.G: Fully Rely On God. And on the back, a hand-written note: *"Fully rely on God, dear friend, for He is faithful. And know that we are continually praying for you."* Throughout her long recovery, Joan kept that pin, and its encouraging message, close to her side and close to her heart.

Many in the church (or our friends and family members) are going through major challenges right now. Some struggle with poor health or troubled relationships. For others, the difficulties are financial. In every nation and every level of society COVID-19 has caused great loss, disruption and isolation. Our congregation, too, is facing significant challenges as we adjust to reduced membership and seek ways to faithfully share the love of Christ in a time of great social and cultural change.

These are serious matters -- but they are also invitations to a deeper faith and Christian practice. ***"Trust in the Lord with all your heart; lean not on your own understanding. In all your ways submit to Him, and He will make your path straight."*** And let us love one another and our neighbors in the name and the power and the Spirit of Jesus Christ – fully relying on God, for He is ever faithful.

Pastor Sue

Community and Church Calendar

February 2	Deacons—12:30 p.m.
February 6	Sunday School - 9:45 a.m. Worship - 11:00 a.m. Noisy Offering/Communion
February 9	Nurture - 3:30 p.m.
Feb. 10-11	<i>Church office closed</i>
February 13	Sunday School - 9:45 a.m. Worship - 11:00 a.m.; potluck luncheon and Congregational meeting
February 16	Properties—5:30 p.m.
February 19	Comm. Dinner - 4:30-6:00 p.m.
February 20	Sunday School - 9:45 a.m. Worship - 11:00 a.m.
February 23	Session - 6:30 p.m.
February 27	Sunday School - 9:45 a.m. Worship - 11:00 a.m.

Meeting Weekly:

Tuesday	TOPS 4:30 - 6:00 p.m.
Wednesday	Cub Scouts - 6:30 p.m.
Thursday	AA - 7:00 p.m.

Pastor Sue does not currently have a set schedule for office hours. If you would like to arrange a time to meet with her, or if you have an urgent pastoral need, she can be reached by cell phone at 814-758-5525.

January Noisy Offering:

\$28.45

Noisy Offerings are received the first Sunday of each month. This month the Noisy Offering will take place on February 6.



Prayers



Continued thanks for God's faithful provision and the generosity of this congregation, who so faithfully share their time, talent and financial resources;

Giving thanks for Pastor Sue, for our elders and deacons, for our church secretary, custodian, musicians and all who serve the Lord in and through JPC;

Prayers for God's peace and justice to prevail in all the countries and governments of the world, and for an easing of tensions between nations;

Prayers for the many people around the world who are suffering due to disease, war, oppression or natural disasters, especially those affected by the recent snow-storms, and giving thanks for all those who reach out to care for others with Christ's love.

Prayers for healing/various health issues, including Mary Lou H., Norma, Tory, Bertha, Regina, Jacinda, Lyle, Evan, Allie, Mark, Nancy R., Phyllis B., Stan & Rhonda M., Amanda, Bert S., Linda D., Jace, Carolyn L., Dave M., Dave & Linda V., Kris M.

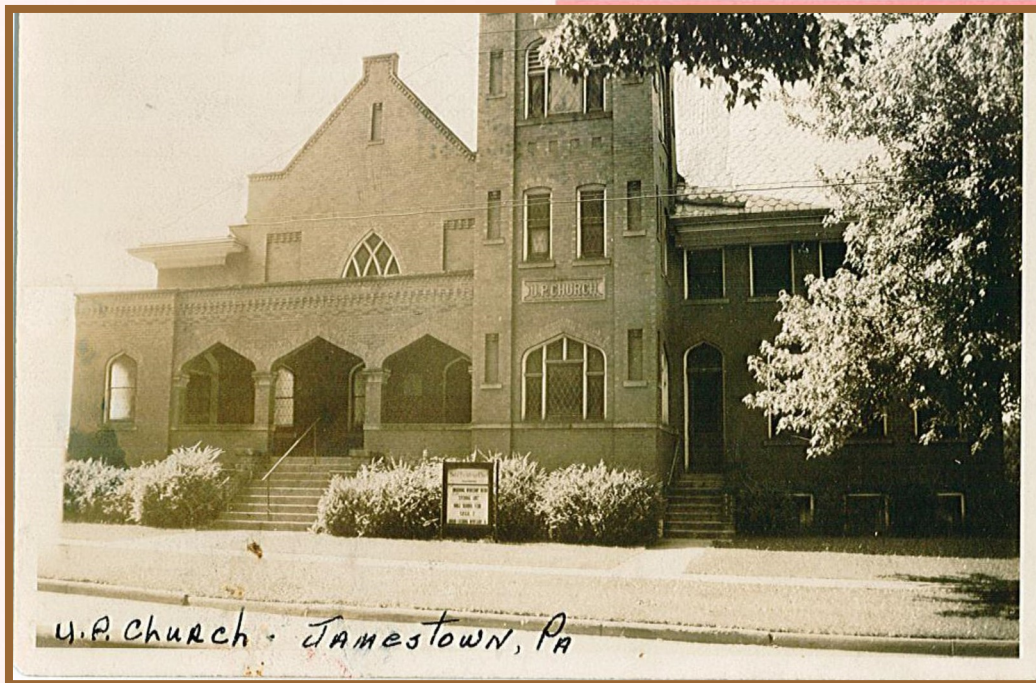
Prayers for encouragement and support for the many whose health requires them to reside in long term care facilities, and for their families;

Prayers for families whose loved ones are nearing the end of life or have recently passed away, including Mary Helen Valesky, Wayne Gehr, Robin Ward's mother Mary Ellen, Tom Walker's niece Kelly, Evan's uncle Bob, his aunt and his Nana;

And giving thanks for the sure hope of eternal life given to all who trust in Christ as Savior and Lord.

MONTHLY CHURCH FINANCES

Checking Balance 12/01/21	\$ 17,676.70
Income	+ 5,994.15
Expenses	- 10,633.36
Checking Balance 12/31/21	\$ 13,037.49
As presented to Session 01/26/22	



This postcard from July 1947 was recently mailed to the church.

Free February Saturday Supper
Feb 19th 4:30 - 6:00
 Meatloaf Scalloped /Au Gratin Potatoes
 Vegetable Dessert Beverage
 RESERVATION REQUIRED FOR TAKE OUT—PLEASE
 CALL 724-932-2101
All Welcome!
Jamestown ECO Pres Church



- 02/13 Kathy McClimans
- 02/18 Al Wester
- 02/20 Alyson Fisher
- 02/23 Ken Collins
- 02/26 Evan Gault

Saturday Supper
Free Community Dinner
Jamestown ECO Presbyterian Church
January 15th

Thanks to everyone who helped, donated, or ordered dinners. We served 114 meals and \$553 was donated for the Jamestown Food Pantry and the Children's Healthy snack Program

Thank You!

"And do not forget to do good and to share with others, for with such sacrifices God is pleased."
 HEBREWS 13:16

3rd Sunday offering

Total offerings on Jan 16th were \$1009 and will go for tornado relief in Kentucky & other Midwest areas.

Qualified Charitable Distributions

**Would you like to donate to your favorite charity (our church)
AND save taxes??**

Consider using a Qualified Charitable Distributions (QCDs)

When planning your IRA withdrawal strategy, you may want to consider making charitable donations through a QCD.

A QCD is a direct transfer of funds from your IRA custodian, payable to a qualified charity. QCDs can be counted toward satisfying your required minimum distributions (RMDs) for the year, as long as certain rules are met.

In addition to the benefits of giving to charity, a QCD excludes the amount donated from taxable income, which is unlike regular withdrawals from an IRA. Keeping your taxable income lower may reduce the impact to certain tax credits and deductions, including Social Security and Medicare.

Also, QCDs don't require that you itemize, which due to the recent tax law changes, means you may decide to take advantage of the higher standard deduction, but still use a QCD for charitable giving.

Can I make a QCD?

While many IRAs are eligible for QCDs—Traditional, Rollover, Inherited, SEP (inactive plans only), and SIMPLE (inactive plans only)* —there are requirements:

You must be 70½ or older to be eligible to make a QCD.

QCDs are limited to the amount that would otherwise be taxed as ordinary income.

This excludes non-deductible contributions.

The maximum annual amount that can qualify for a QCD is \$100,000.

For a QCD to count towards your current year's RMD, the funds must come out of your IRA by your RMD deadline, generally December 31.

Any amount donated above your RMD does not count toward satisfying a future

What kind of charities qualify?

The charity must be a 501(c)(3) organization, eligible to receive tax-deductible contributions.

Tax reporting

A QCD is reported as a normal distribution on IRS Form 1099-R for any non-Inherited IRAs. For Inherited IRAs or Inherited Roth IRAs, the QCD will be reported as a death distribution. Itemization is not required to make a QCD. While the QCD amount is not taxed, you may not then claim the distribution as a charitable tax deduction.

A QCD is not subject to withholding. State tax rules may vary, so for guidance, consult a tax advisor.

When making a QCD, you must receive the same type of acknowledgement of the donation that you would need to claim a deduction for a charitable contribution.

A tax advisor can help you determine if both your IRA and charity qualify for QCDs.



February 13th

- After church
- Potluck lunch
- Church will provide: Beverages, Beef stroganoff & noodles

- Present annual congregational report
- Election of officers
- Update on Pastor Sue's replacement

Jamestown ECO Presbyterian Church
Highlights of the Session Meeting, January 26, 2022

At the regular meeting of the session on January 26, 2022. Minutes from the December 22, 2021 minutes were approved.

Treasurer's Report & Finance

Checking balance as of December 31, 2021: **\$13,037.49**

Offerings for December totaled **\$5,595.00**

Mission: The special offering from January 16, 2022 will be donated to World Renew for disaster relief in Kentucky.

Fellowship: Saturday Supper on February 19 – meatloaf. Tom and Bud will organize.

Worship: Preliminary plans for Easter sunrise at the park have begun, coordinating with 1st Methodist Church.

Outreach: Planning a recognition event for first responders. Motion to approve a Scout working on his Eagle Scout to organize an Easter Egg Hunt to be held on our property April 9, 2022.

Preschool: Finances going well. Thanks for the support of the pepperoni sale.

Old Business: Discussed progress regarding future pastoral leadership. Reviewed information that has been gathered thus far. Encourage all to continue to keep this process in prayer.

Bud Owen presented the 2022 budget. A motion was made to accept the proposed budget, it was seconded and unanimously approved.

New Business: Schindler Elevator did a quick inspection this morning, gave a bid of work that needs to be taken care of before the state comes in for final inspection.

Bill Love has presented ideas for railings to be installed in the sanctuary for the choir. Blueprints were reviewed and this will be discussed further at our next meeting.

Next Nurture meeting: February 9 at 3:30 p.m.
Next Properties meeting: February 16 at 5:30 p.m.
Next Session meeting: February 23 at 7:00 p.m.

THANK YOU



**TO THOSE WHO
SUPPORTED OUR
MILITARY AND
COLLEGE STUDENTS**

Sunday Duties - February

Close Up: Bud Owen
Counting: Janeen Mihoci

Deacon for February

Susan Anderson

If you know of anyone in the hospital or in need of assistance please contact Susan 724-932-5072.

February 2022

Sun

Mon

Tue

Wed

Thu

Fri

Sat

		1	2 12:30 Deacons	3	4	5
6 9:45 Sunday School Worship 11:00 Communion Noisy Offering	7	8	9 3:30 Nurture	10	11	12
				Church Office closed		
13 9:45 Sunday School Worship 11:00 pot luck luncheon & congregational	14 	15	16 5:30 Properties	17	18	19 4-6:30 Community Dinner
	Pastor Sue out of town					
20 9:45 Sunday School Worship 11:00 Pastor Sue out of town	21	22	23 6:30 Session	24	25	26
27 9:45 Sunday School Worship 11:00	28		Jamestown Presbyterian Church 411 Liberty Street Jamestown, PA 16134 724-932-2101 email: jpc411@windstream.net Web site: www.jamestownpres.org			



Jamestown Presbyterian Church
411 Liberty Street
Jamestown, PA 16134

Jamestown Presbyterian News



In This Issue:

Pastor's Page	Page 1
Church & Community:	Page 2
Upcoming Events	Page 3
Community Dinner	Page 3
Session Highlights	Page 5
Calendar Page	Page 6