



Dialogue

FIRST PRESBYTERIAN CHURCH OF ASHLAND

Walker & Siskiyou • 541/482-3536 • firstpresashland.org

Volume 57, No. 12

December, 2017

In a quiet moment, finding the true message of Christmas

This time of year can be overwhelming for us. Expectations are so high surrounding Christmas. We must buy the perfect gift for someone, decorate with the latest lights on our homes, bake cookies for all of our friends and co-workers, get the Christmas letters written and cards sent out, and cook the perfect Christmas dinner for our family (*or have the best sermon ever written for the Christmas Eve service*).

We are invited to parties, concerts, special events, family gatherings, and find ourselves running around at a frenetic pace. The emphasis at this time of year is on consumerism, as Black Friday starts earlier and earlier, encouraging us to

get out there and shop for Christmas even a week before Thanksgiving! American author E.B. White wrote, "To perceive Christmas through its wrapping becomes more difficult every year."

My hope and prayer for you is that at some point during this holiday season you can find a quiet moment to sit down and read the gospel of Luke, chapter 2:1-20. That is the message of Christmas. A child was born for us, to a poor homeless couple in an animal barn. Shepherds came and rejoiced at what they saw. The world was changed forever.

May you find time to get through



all the wrappings of this time of year to perceive the true message of Christmas: to give thanks for the birth of the Messiah, who rescued us from sin, who taught us a new way to live, and who opened the door to everlasting life.

*In Christ,
Dan*

December schedule of worship, events

- **Regular 8, 10 o'clock** Sunday services throughout December, except Christmas Eve
- **Sunday, Dec. 3** – Advent Faire 11:30 - 2
- **Sunday, Dec. 10** – Birthday celebration for Charles and Betty Howe
- **Sunday, Dec. 17** – Caroling party at 4 p.m.
- **Sunday, Dec. 24** – Combined worship and carol sing at 10 a.m. (no 8 o'clock service)
- **Sunday, Dec. 24** – Christmas Eve candlelight service at 7 p.m.
- **Monday, Dec. 25** – Winter shelter carol sing at 8 p.m.
- **Thursday, Dec. 28** – Taizé service 7 – 7:30
- **Sunday, Dec. 31** – New Year's Eve concert at 3 p.m.



Inside this issue

Page 2 AYC, December events, New Year's Eve Concert
Page 3 Caroling party, Howe celebration, Joy Offering
Page 4 Stewardship, Library, B and G, Men's Book Club
Page 5 Session, Birthdays, Shelter
Page 6 *Telling Our Stories*: Howes
Page 7 Advent Faire
Page 8 Fall planning team, Rogue Valley Chorale, In memoriam
Page 9 Thanks from Shirley, Haiku
Page 10 PW, Circles, Book Club, SMART
Page 11 Bible verses, Peace House thank you, deacons, photo



Dec. 3 – Join us for the Advent Faire/lunch at 1st Pres. 11:30 – 2 p.m.

Dec. 10 – White Elephant gift exchange at 1st Methodist, 5-7, includes dinner.

Dec. 17 – Caroling with UCC church, 4 p.m.

The Dialogue

Thanks to all who have contributed to the Dialogue. Articles are welcome for the January issue. Please submit by Thursday, Dec. 21. Email to huntermarcia@gmail.com.

Marcia Hunter, editor

Belief Series to wrap up in December

Wednesday nights at 7 or Thursday mornings at 10 the last two installments of “Belief,” a series on faith from the Oprah Winfrey Network, will be shown in the sanctuary. Topics include the practice of faith and how faith leads us to a good life.



Christmas Eve December 24

Morning — We’ll have one combined service on Christmas Eve at 10 a.m. You can request your favorite Christmas carol, as we will be having a hymn sing! Pastor Dan will present a one-act play entitled, “Heavenly Director.”



Evening — Join us for Lessons and Carols at 7 p.m. The story of Christmas will be shared in scripture, with a lot of special music, as well as a candle lighting at the end of the service.

Christmas Day December 25

Join us as we share God’s love with our Winter Shelter guests. We’ll sing Christmas carols starting at 8 p.m.

Taizé’ Service on Thursday, December 28, 7-7:30 p.m.

Join us for wonderful music, prayer, contemplation and candlelight, as we welcome in the New Year.



New Year’s Eve Concert — a big deal at FPC — Dec. 31 at 3 pm

By Jill Turner and the winter team

The New Year’s Eve concert is back again, on Sunday, Dec. 31 at 3 p.m., followed by an elegant cheesecake reception in Calvin Hall.

Laurie Anne Hunter has been the resident accompanist for this event for over a decade, before it moved to our church, and she will again coordinate and accompany the musicians. A stellar line-up of talent is expected again this year.

Last year the crowd exceeded expectations, so we will limit seating in the sanctuary to the first 310 people (Fire Marshall rules) and use a remote digital feed in Calvin Hall for overflow. Doors will open 30 minutes prior to the concert, and people will be in line at that time, so do come early.

Admission is free, but donations will be accepted. Parking will be tight, so please carpool or park on the street or in the Lutheran Church lot, if you are able. If you are dropping off a person who needs help getting to a seat, there will be a special usher to assist that person while you park your car. We will need a number of ushers, parking attendants, and reception assistants, so please sign up to help on Jill Turner’s clipboard. Seats will be reserved for workers.



Caroling party warms the heart, brings cheer to others

By Jill Turner

I just want to write a note to encourage others to come out for the caroling party. It is much more than just singing Christmas songs from the past. It doesn't even matter if you can sing or not. (I don't sing in the choir for a good reason – my ability to carry a tune is really limited.)

Please join us on Sunday, Dec. 17 at 4 p.m. in Calvin Hall. We will carpool to our various stops, returning afterwards to share a warm meal (potato bar).

Our caroling is focused on visiting care facilities and church members who are shut-ins. It brings joy to my heart to see these people.

I look back over the last years and remember many of our former members and friends. From the woman in memory care who came running to sing with us wearing her upside-down bathrobe, to people lying in bed – I remember their smiles as we sang to them. Most sang along even if they had memory problems; if nothing else, they remember Christmas songs because of their upbringing with Christmas traditions.

For me it is a meaningful time that has often been a lasting memory of my final connection with church friends. One year, over 20 carolers bunched together into Lucille Williamson's bedroom, where a small

child jumped up on her bed beside her to her encouragement and glee. Lucille died within a month of that final memory.

Last year many of us spoke with Gene and Mary Morris, some for the last time, as they ate dinner and listened to the caroling at Brookdale.

It has been a privilege and blessing to see these people with their bright eyes and big smiles. To me it is one of the small things that make this church a community and a family.



Charles and Betty Howe celebrating their 100th birthdays in December

Charles and Betty Howe will both turn 100, one day apart, this month. Long-time members of our church, they now live in Portland near their son, but they still support our church and own a house in Ashland. Charles was the church treasurer for many years.

We have plans to include them in our Birthday Sunday celebration on Dec. 10, which follows their birthdays on Dec. 6 and 7 (Betty is one day older!). Please plan to come

sing to Charles and Betty, via Skype, at coffee hour that day, and **bring a card** (which we will send in a large packet).

Or, if you wish, you may send your card ahead, so it gets there on time, to this address: **3810 SE Bybee Blvd., Portland, OR 97202**. According to Shirley Patton, Charles and Betty love mail and enjoy hearing from people, and Charles reads letters out loud to Betty, so it's a nice shared time together (*see page 2*).

Portland
party Dec. 9



Please join us in the celebration of the 100th birthday of Betty and Charles Howe at the St Paul Lutheran Church in Portland on Saturday, Dec. 9 from 1-4 p.m. – a casual open house with appetizers and cake (cut at about 2 p.m.).

Betty and Charles are eager to share memories and enjoy your company. Please make your presence your gift. Call Susan in our church office for more information and to RSVP.



By Marcia Hunter

The Christmas Joy Offering has been a cherished Presbyterian tradition since the 1930s.

Gifts are divided between the Assistance Program of the Board of Pensions, providing financial support to church workers and their families; and Presbyterian-related

schools in New Mexico, Texas, and Alabama that educate future church leaders from among racially and ethnically diverse populations.

Thank you in advance for giving generously to the Christmas Joy Offering as a response to Christ's charge to love one another.

Stewardship season: 'Being a cheerful giver'

By Jill Turner

"Being a cheerful giver," the theme for the 2017 Presbyterian stewardship campaign, has caused me to reflect and feel joy. To me, giving should come from the heart and make a person cheerful.

This year I am particularly cheerful about the faithful givers in our FPC- Ashland. The past several Novembers we "finance geeks" have reported that we were short and needed just a little more giving to break even. Miraculously, this year, our revenue has exceeded expenses during the first ten months by \$14,000. What a blessing. Thanks, everyone, for giving!

With this good news, comes a message that the needs of our church continue. As our community of faith and prayer continues to support each other and keep us focused on the needs of the world, our expenses go on. Monday night winter shelter and the monthly community dinners have started.

As you consider year-end gifts to your favorite charities, don't forget the church. You may give to our general account or make a special gift for much needed capital expenditures or to pay off debt. We still owe \$45,000 on the roof, sound system and screen. Gifts can be made in the form of checks or stocks. Giving of appreciated stock does have some tax advantages.

If you wish to give donated stock, instruct your broker to transfer your shares to Charles Schwab (main phone number 800-435-4000), into the account named First Presbyterian Church, #3294-8360 (DTC 0164). The average high/low price on the day the shares are received in our account will be used to determine the value of the gift.

Please send the instructions from your broker to church treasurer Trish Styer at pfcashland@gmail.com, so she can watch for the transfer.



By Virginia King

Recent book donations have added these titles to our shelves:

- *Unshaken* by Francine Rivers, a "fleshed-out" story of Ruth and Naomi.
- *When Blood and Bones Cry Out* by John Paul Lederach.
- *Things I Overheard While Talking to Myself* by Alan Alda.
- *All the Parables of the Bible* by Herbert Lockyer
- *Chicken Soup for the Soul*.
- *The Bible in Time*

Merry Christmas from the church library.

Men's Book Club reading *High Divide* in January

The Men's Book Club will meet next on Jan. 18 at Smithfield's Pies to discuss the book, *High Divide*, by Lin Enger. For more information, please contact David Hall: dhall@mind.net

B and G thanks you!

By Howdy Miller and Gene Wright

This is the season for giving thanks to each and every one of you from the Buildings and Grounds Committee for blessing us with your time and hard work.

Due to all your efforts, we will now be able to go into winter better prepared. We all do good work, and together we are able to accomplish a lot. Buildings and Grounds are most appreciative of all your accomplishments. Hope to see you all at our next event.



Brian, John, Gene and Howdy are having WAAAAAYYYY too much fun — isn't it supposed to be called a WORK DAY? (Photo by Kathy Sager)

Session notes for November meeting

By Marcia Hunter, clerk of session

Howdy Miller reported on a recent conference at Menucha called "Making Better Decisions Together," which he will share with the long range planning team.

Brian Almquist shared the highlights of the recent Presbytery meeting which he and RuthAnn attended; a new synod loan program for seed money for special projects; a letter to General Assembly about war in Syria; a new young pastor's eloquent statement of faith; and more.

Our treasury is in good shape this year, so we have some extra funds to pay off debt and/or use for capital expenses in 2018.

Session is working on revising and reorganizing the Policy and Procedure Manual to be more in line with current practices.

Committees submitted budget requests for 2018, including a new \$1000 commitment to become a "partial apostle" with Habitat for Humanity; Dan will sit on their

board. The full budget will be voted on at the January session meeting and shared with the congregation at the annual meeting.

The church directory is being updated; Linda Purdom will take photos of new people and those who want a different picture. Other changes can be done online or through the church office.

Winter planning team's schedule was approved: Sunday services as usual, except on Dec. 24 a combined service at 10 a.m. and a 7 p.m. Christmas Eve service. The annual meeting/potluck lunch will be on Jan. 28.

Offerings were approved, including socks, gloves, and scarves collected on the Calvin Hall tree for the winter shelter; monthly noisy offerings; PC(USA) Christmas Joy Offering; and other mission funds earmarked for Presbyterian Disaster Relief and/or Presbyterian Church of Santa Rosa, CA.

Shelter residents appreciate socks

Dear friends,

It has been said that the most requested item at homeless shelters is socks. And since our friends on the street spend so much of their day walking, one can easily understand why. Couple that with the fact that their shoes are worn and likely not water resistant which leads to cold, damp feet. Not a comfortable feeling at all. That's probably why when we have new socks, they disappear so quickly!

This year, Christmas falls on Monday and we hope to gift each of our guests that evening with new socks, hand warmers, and some

tasty sweets. Most of our guests are men, and therefore men's socks are in demand, but we have a few women each week and they would appreciate cozy socks in women's sizes.

Finally, gently used warm coats, hats, gloves, and shoes are always welcome.

Thank you so very much for remembering our unhoused community members this holiday season. You can put items on the special tree just inside Calvin Hall.

Blessings,
Karen



December birthdays

2 – Sue Sager
2 – Lilli Patton
3 – Jo Brubaker
6 – Betty Howe (100)
6 – Judy Jordan
7 – Charles Howe (100)
7 – Richard Welton
8 – Randall Stothers
8 – Amy Patton
12 – Barb Street
14 – John Breneiser
16 – Alice Welton
19 – Adam Jones
19 – Curtis Jones
25 – Sook-Ja Hansen
26 – Donna Wright
28 – Scott Hunter
29 – Brian Almquist
31 – Esther Freed

December anniversaries

18 – Mike and Christine McCollom
19 – Bob and Kathy Dewitt
27 – Jerry and Esther Freed

Dear friends,

Thank you for making Presbyterian Disaster Assistance a priority out of many opportunities to give. Throughout the U.S. and the world, communities are seeking resilience and recovery. . . .

You have stepped up with your prayers, your gifts, and your time, realizing God's extraordinary love.

In Christ's peace,
The Rev. Dr. Laurie A. Kraus
Director, Presbyterian Disaster Assistance

Telling our Stories

Charles and Betty Howe celebrating 100th birthdays

Here are some excerpts from a recent interview by Jennifer Willis/Special to the Oregonian.

Charles and Betty Howe were married in Portland on Nov. 16, 1941 -- just three weeks before Pearl Harbor. After serving in the U.S. Army during World War II, Charles worked as an accountant for Stimson Lumber Company for 30 years. Betty was a secretary in the Crescent City School District for 25 years.

The Howes have five children, 10 grandchildren and two great-grandchildren.

How did you meet?

Charles: We were in a young people's group at the First Presbyterian Church.

Betty: I know we went out some place for a picnic but I can't remember if that was the time.

Charles: That was on Memorial Day of 1941.

Was it love at first sight?

B: I imagine it kind of was, because we got married within how many months after we met?

C: It wasn't very long. Six (months).

What do you remember most about your wedding day?

C: It was wet and rainy.

B: All the rain. That's about all I can think of. We didn't have a reception.

Where did you go for a honeymoon?

B: We went to Southern California.

C: We didn't stay there very long, maybe three days.

What do you remember most about being newlyweds in the early days of World War II?

C: We had found an apartment over on North Emerson, just off of Interstate Avenue over there. We got back . . .

B: Just about two weeks before the war started. Wasn't it?

C: You had to drive around in the dark. Shut the lights off (because of wartime blackout regulations). We weren't even married a year and I was pulled into the service. Army. Solomon Islands. Instead of going into the fighting group, why, I was sent to work at the base post office there. Because I had worked in a post office in Portland for several years. It was very lucky and fortunate.

B: Well, in the meantime I became pregnant. When he left, I didn't have the child yet.

How long was he gone?

B: It was three years.

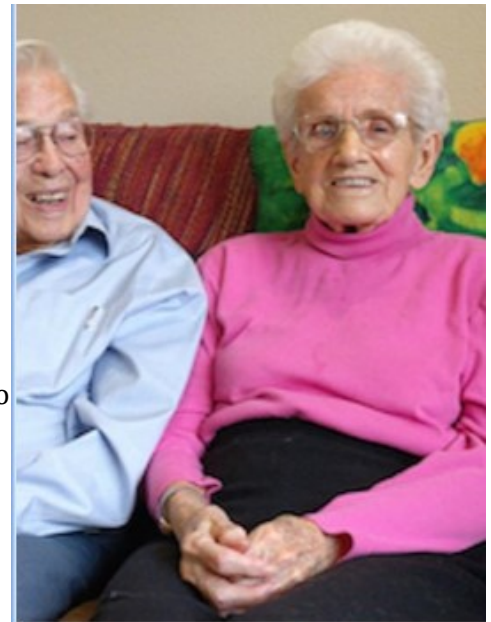
C: Three years and one month.

B: Well, it was really hard because the Army doesn't pay enough money to live on your own. I was very fortunate I had his mother and dad and my mother and dad, that I visited and stayed with. For three years.

What have you enjoyed doing together?

B: Well, I would say gardening.

C: Yeah, we usually had a garden



wherever we lived.

B: Vegetables and flowers. In Crescent City, where our children grew up, they didn't have much to do. So we made trips over to the Ashland Shakespeare Festival every summer and took in the plays there. And we always said we came over there to get warmed up.

C: We went once to Europe and once to England. Just the two of us.

B: We bought a car over there.

C: We bought a Mercedes.

B: We went to pick it up in Germany.

C: We bought it through a dealer in Grants Pass, and when we got over there we picked the car up and drove around as we wished. We went to England with it, and then they shipped it back from England. to Portland.

B: We didn't make any reservations. Just kind of took the car and drove, and sometimes we'd end up in kind of peculiar places, but it was interesting.

What's your secret to a long and happy partnership?

B: Raising the kids and making sure they had money to go to college with, like that, we didn't have time to . . . We just hoped it would work out.





Advent Faire is coming!

Sunday, Dec. 3 after worship

Crafts, food, fellowship for all ages.

**Make wreaths, centerpieces, candles,
gingerbread houses, ornaments, more.**

Decorate the sock/glove tree.

Community welcome — invite friends and neighbors.

**\$5/person for crafts/lunch; maximum \$15/family
or lunch only for \$1**

You can help by:

- ♦ **Collecting small pine cones, seeds, mistletoe, moss, evergreen boughs, and holly.**
- ♦ **Bringing warm socks, gloves, scarves, and hats for our shelter friends.**
- ♦ **Setting up, working at a crafts table, cleaning up, or making cookies. Contact Marcia Hunter, Jill Turner, or Debbie Miller.**

A note of thanks to the Fall Planning Team

By Linda Purdom

Fall Team 2017 has almost finished. I want to thank everyone on the team for their hard work in making these three fall months special.

We started in September by decorating the sanctuary. Adele made banners to grace the walls and also brought one of her paintings, of a bring orange pumpkin to add fall color. Darlene brought a fall runner for the pulpit, and the team added a cornucopia full of apples and pumpkins to the communion table.

For World Communion Sunday the team baked a variety of breads, providing quite a sampling of good things to eat. On Oct. 15 we celebrated the Wedding Feast, following Dan's sermon on that theme, with a feast of our own. (No one does a potluck like Presbyterians.) Folks

brought their wedding photos to display and cans of food as a "gift" to the newlyweds, which was donated to acknowledge World Food Day.

For Reformation Sunday we set up votive candles to be lit by parishioners in remembrance of loved ones. For coffee hour Rick made a multi-layered cake to celebrate the 500th anniversary of the Reformation with candles in the shape of 500.

The team set up candles, a cross, and an icon on a table for the Taizé service and will do it again for the next service at the end of this month.

Everyone worked together to put on a big breakfast for the Stewardship Campaign kick-off. Adele and Caroline decorated the tables with roses. Marilyn, Pat, Adele and Rick brought delicious breads, casseroles and bacon. The tables were set, cof-

fee delivered to the tables, food served on the church's china, and everyone cleaned up afterwards. A special thanks to Virginia who came in and helped clean up and to Adele, Marilyn, Rick and Darlene who washed a million dishes. Thanks also to Pat and Caroline who put away food and dried dishes as the production line cleaned every plate and fork. And Victor, though not officially on the team, helped to get the coffee ready, ran the dishwasher, and cleaned up rather browned casserole pans. After all was put right, Adele and Caroline took roses to Ilse, who is recuperating at Linda Vista.

Team, you are amazing! Your willingness to do whatever needs to be done makes coordinating the Fall Team such a pleasure. Thank you for all your hard work.

Rogue Valley Chorale issues special invitation

Dear Friends,

I would like to extend an invitation to the Rogue Valley Chorale's holiday concert, Saturday, Dec. 2 at 7:30, or Sunday, Dec. 3 at 3 at the Craterian Theater. We have a special "code" for you, our invited guests. Call or visit the box office and give the code "Friend of RVCA," which will enable you to receive \$5 tickets.

We hope to see you at the Crate.

Sincerely,

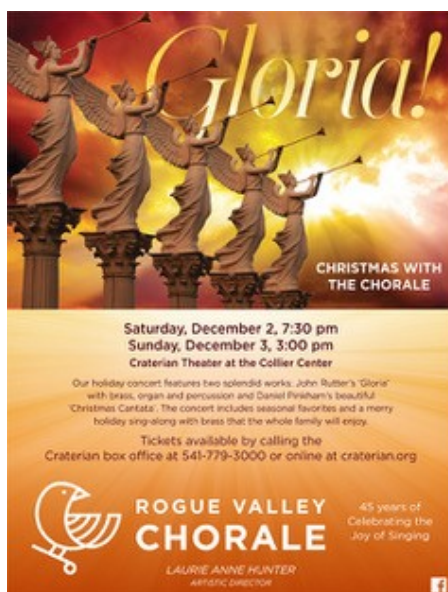
Laura Rich, Executive Director
Rogue Valley Chorale Assoc.

541-414-8309

818-239-9878

office@roguevalleychorale.org

www.roguevalleychorale.org



In Memoriam: Gene and Betty Clark

Editor's note: Gene and Betty Clark were long-time members of our church who recently passed away. Pastor Dan conducted a small memorial service with the family. Below you will find memories shared by Betty Barger, who remembers them well.

By Betty Barger

I met Gene and Betty Clark in 1957 when I transferred to the Ashland Presbyterian Church from the Medford Presbyterian Church. At the time, the Ashland church was on North Main where the Bard's Inn is now.

(continued on page 9)



Photo by Daily Tidings

Thank you from Shirley Patton

thing so generous and un-called for?

Well, if you don't know it's going to happen, there is nothing to do

*Ring the bell that still can ring.
Forget your perfect offering.
There's a crack in everything.
That's how the light gets in.*

I'm writing this at Kristin's home near Chicago so I don't know who all was in on the planning, but I understand that Marcia, Sue Sager, Barbara Marsh, Darlene Saunders, and Debbie Miller were in the thick of things. Susan Coghill? Dan? Jill? Others? You know who you are, even if I don't. I thank you all. And the beautiful bouquet of autumn flowers from PW made my heart sing, just as all of you do.

Those of you who were able to come or sent cards or signed the book, thank you! And thank you if, like me, you were oblivious to what was being planned. If it's not too greedy I would ask for your prayers while I am having surgery for Deep Brain Stimulation at OHSU on Dec. 11 and 15. I'll spend most of Advent in Portland with Kent's and Will's families. And for every way that God has blessed this church and our relationships I give thanks.

*Peace,
Shirley Patton*

Dear family and friends at First Presbyterian Church of Ashland,

Please accept my deepest thanks for all the ways you contributed to that outrageous party, Monday, Nov. 13 at the university's Recital Hall. I am surprised at what good schemers you are to have kept me in the dark!

As many of us have experienced, it is often easier to give than to receive. We're much more comfortable doing a kindness or blessing for another than being the recipient. That being said, I had the amazing opportunity to practice receiving at the party my longtime friend, Peggy Rubin, orchestrated.

I'm so grateful it was a surprise because I would have had an agonizing time thinking about it in advance, feeling unworthy, worried about the time it was taking from others' busy lives. How does one deal with some-

but let love pour down surprise after surprise after surprise. Do you suppose that's what God's grace is like? Undeserved but bountiful?

Mae West said, "Too much of a good thing can be wonderful!" I think she's right! The evening was "too much" but it was wonderful.

What joy to listen to the Fains, Paula Sohl, Dianna Warner and Marcia Hunter's music—and I don't know how Marcia put all her contribution together, but it was so thoughtful and she read Max Ehrmann's poem *Desiderata* beautifully. The chorus of Leonard Cohen's "Anthem" I memorized a few years ago. It has an important message for those of us reluctant to show our vulnerabilities. More and more I'm growing to appreciate that when we share our weakness, we come closer together.

In Memoriam (cont. from page 8)

Betty and I were both members of the Women's Association and the Westminster Circle until our children were in school, when we both ended up working at Lincoln School.

I did see them a lot until they moved to Grants Pass. Gene always had a smile and a story to tell.

I was very lucky to have known Gene and Betty Clark.

Haiku Corner



Autumn rain at last.
Baby grass sprouts all around.
Soon shocked by snowflakes.

By "Poet" Robb Grover

PW to feature Ellen Waldman in January

By Barbara Marsh

Do plan to attend the next meeting of Presbyterian Women, scheduled for Thursday, Jan. 4 at 1 p.m. in Calvin Hall.

We are pleased to announce our speaker will be Ellen Waldman, a well known local Certified Aging Life Care Specialist who has guided

people through elder care decisions since 2000. You may have read her book *Aging Happens* that was based on columns she wrote for the Ashland Daily Tidings.

We encourage you to bring guests, friends and spouses to hear this special program. Further details will be in the January *Dialogue*.

Circles to hold Christmas potlucks



By Marilyn Mobley

Elsie Nelson Circle will meet at the home of Marilyn Wright for our annual Christmas potluck on Monday, Dec. 11. Lunch will be at 12:30 -- please notice the time change.

We will be studying Lesson 4 of our study guide *Cloud of Witnesses*, "In Community with God's Messengers." Hebrews' author compares Jesus to the angels and writes about them extensively in this book as a way of reminding us that God is nearer to us than we might think.

Please bring an unwrapped toy and a pair of shoes for children in need in our community. There is always plenty of food, so if you wish to join us for this special time, call Marilyn Wright or Marilyn Mobley for more info.

By Barbara Marsh

Westminster Circle will celebrate the Christmas season with a potluck lunch at the home of Kathy Oyler Thursday, Dec. 21. We will meet at 11:30 and plan to eat around noon. It will be the perfect way to feel the spirit and joy of the holiday season in Kathy's beautifully decorated home.

You are invited to bring a favorite side dish and to share your favorite angel story with the group. The entree and beverages will be furnished.

For more information, please contact Barbara Marsh.

Women's Book Club choosing titles for 2018

By Marcia Hunter

Women's Book Club doesn't meet in December. Our next meeting will be on the last Monday in January, when we will choose new books for 2018.

In the meantime, please send one or two suggested titles to Cheryl Therkelsen by email: cheryltherkelsen@gmail.com. The deadline is Jan. 8.

S M A R T
START MAKING A READER TODAY®



Volunteers needed for local SMART reading program in elementary schools

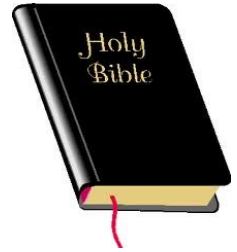
By Kathy Sager

SMART (Start Making a Reader Today) envisions an Oregon where every child can read and is empowered to succeed.

As a SMART volunteer, you read with children once a week. The consistent one-on-one relationship gives children the attention, self-confidence, and skills to succeed in school and beyond. SMART further encourages children to read outside the classroom by giving them new books each month.

For more information about volunteering, contact the Rogue Valley SMART office at 541-734-5628 (www.getsmartoregon.org) or call Kathy Sager.

December Bible verses



Micah 5:2-5

The Lord says, "Bethlehem Ephrathah. you are one of the smallest towns in Judah, but out of you I will bring a ruler for Israel, whose family line goes back to ancient times. So the Lord will abandon his people to their enemies until the one who is to give birth has her son. Then his fellow countrymen who are in exile will be reunited with their own people. When he comes, he will rule his people with the strength that comes from the Lord and with the majesty of the Lord God himself. His people will live in safety because people all over the earth will acknowledge his greatness, and he will bring peace.

Luke 1:41b-55

Elizabeth was filled with the Holy Spirit and said in a loud voice, "You are the most blessed of all women, and blessed is the child you will bear! Why should this great thing happen to me, that my Lord's mother comes to visit me? For as soon as I heard your greeting, the baby within me jumped with gladness. How happy you are to believe that the Lord's message to you will come true!"

Mary said, "My heart praises the Lord; my soul is glad because of God my Savior, for he has remembered me, his lowly servant! From now on all people will call me happy, because of the great things the Mighty God has done for me. His name is holy; from one generation to another he shows mercy to those who honor him. He has stretched out his mighty arm and scattered the proud with all their plans. He has brought down mighty kings from their thrones, and lifted up the lowly. He has filled the hungry with good things, and sent the rich away with empty hands. He has kept the promise he made to our ancestors, and has come to the help of his servant Israel. He has remembered to show mercy to Abraham and to all his descendants forever!"



... from Peace House

Dear Pastor Dan and congregation,

It was a pleasure to be with you at church. And we so appreciate your "noisy" donation.

Our thanks for all you do in our community, especially for the disadvantaged. Please accept our utmost thanks for your generous gift.

Blessings!

Elizabeth and the Peace House Board

Editor's note: The noisy offering donation came to \$101.39.

Deacons help ten families for Thanksgiving, Christmas

By Sharon Laskos

Our church is helping ten families from Ashland this Thanksgiving and Christmas with the deacons green envelope gifts. Eight are single parent families with a total of 16 children.

Shop'n Kart gift cards were mailed for Thanksgiving food. Christmas food cards, BiMart gift cards for children, and cookies will be picked up by the families in December.

Thank you for your generous gifts to the Deacons Fund.



Lawrence King and Victor Conway take care of church maintenance. (Photo by Kathy Sager)



First Presbyterian Church
P.O. Box 626
Ashland, OR 97520
Return service requested
Dated material



First Presbyterian Church

Siskiyou and Walker Ashland, OR 97520 541-482-3536

A welcoming and affirming congregation

Pastor: Rev. Dan Fowler revfowler@yahoo.com **Office Manager:** Susan Coghill presbyashland@yahoo.com

Director of Music: Laurie Anne Hunter lahunter@mind.net **Parish Worker:** Wendy McAninch

Treasurer: Carolyn Moeglein cmoeglein@yahoo.com

Ruling Elders on Session: Jill Turner, Elaine Morgan, Linda Purdom, Howdy Miller, Jim Holloway, John Sager, Bill Sager

Clerk of Session: Marcia Hunter

Deacons: Shirley Patton, Gail Johnson, Darlene Saunders, Wendy Ray, Debbie Miller, Judi Quiett, Ruth Ralls, Sook-Ja Hansen, Rick Herst **Deacon Moderator:** Marjorie Lininger

Ministers: the whole congregation

Our Mission

We are a faith community centered in Christ, doing justice,
loving kindness and walking humbly with God.

Our Vision

Open Minds, Open Hearts, Open Hands, Open Table




Visit the church website at www.firstpresashland.org

"Like" us on Facebook at fb.com/firstpresashland

Regular Sunday Schedule
8am Chapel Worship
9am Pony Espresso
10am Sanctuary Worship
11:15am Fellowship



December 2017

SUNDAY	MONDAY	TUESDAY	WEDNESDAY	THURSDAY	FRIDAY	SATURDAY
					1	2 JCFC Fundraiser
					Advent Faire set up	
3 1st Sunday of Advent Advent Faire Deacons Fund for Holiday family sponsorship AYC-1st Pres	4 4:30pm B & G 7:30pm Winter Shelter (CH)	5	6 7-8pm Belief Series by Oprah in the Sanctuary	7 10-11am Belief Series by Oprah in the Sanctuary	8	9 10am-1pm Women w/Wings (CH)
10 2nd Sunday of Advent Birthday Sunday AYC-Methodist	11 12:30pm Elsie Nelson Circle 7:30pm Winter Shelter (CH)	12 4pm Admin & Finance 5:30pm Long Range Planning	13 12:30pm Deacons lunch 4:30pm Session 7-8pm Belief Series by Oprah in the Sanctuary	14 10-11am Belief Series by Oprah in the Sanctuary 12pm Blood Drive 	15	16
17 3rd Sunday of Advent Winter Team Meeting 4pm Caroling AYC- Caroling with UCC	18 7:30pm Winter Shelter (CH)	19 Dan gone	20 5pm Community Dinner	21 Dialogue Entries Due 11:30am Westminster Circle	22	23
24 Christmas Eve 4th Sunday of Advent Combined 10am service 7pm Candlelight Service	25 Christmas Day Office Closed 7:30pm Winter Shelter (CH) 8pm Caroling for Shelter	26 Office Closed	27	28 10am Dialogue Folding 7-7:30pm Taize	29	30
31 New Year's Eve 3pm Concert	New Year's Day Office Closed					
Weekly Building Schedule						
AA	Fireside Room	7am-8am	M-Sat	Preschool	Lower Calvin Hall	9:00am - 12:00pm M - F
AA	Fireside Room	9am-10am	M-Fri	Realtors	Calvin Hall	8:30am - 9:30am Thurs
AA	Fireside Room	9am-10:30am	Sat	OLLI Knitters	Fireside Room	1pm-2:30pm 1st & 3rd Tues
Alanon	Fireside Room	7pm-8:15pm	Mon	AA Workshop	Fireside Room	11am -12pm Sat
Alanon	Fireside Room	7pm-8:30pm	Fri			