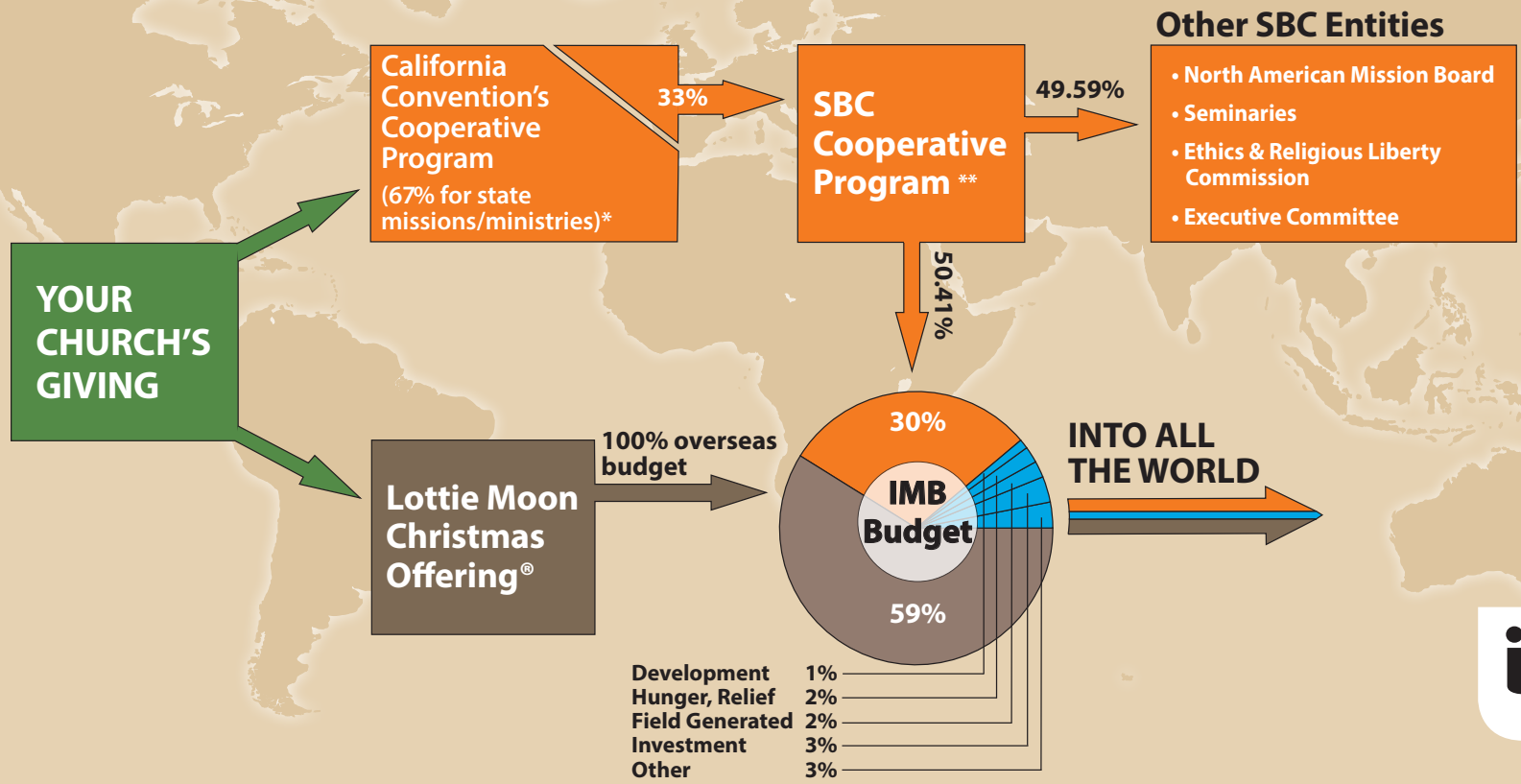


Funding International Missions



Chart reflects CALIFORNIA's Cooperative Program giving



- ➔ Your church decides how much of the money members give will be sent to your state convention for use through the SBC Cooperative Program.
- ➔ State convention messengers vote on what percentage of these funds stay in the state and what percentage is forwarded to the Cooperative Program.
- ➔ Slightly more than half of these Cooperative Program funds go to IMB (comprising 30% of IMB's total budget) and the remainder to other SBC entities.
- ➔ Every penny your church gives to the Lottie Moon Christmas Offering directly funds your IMB missionaries as they work to bring unreached peoples to Christ.
- ➔ Nearly 60% of the IMB's total budget comes from Lottie Moon gifts.

IMB connecting® is a registered trademark of IMB.
Lottie Moon Christmas Offering® is a registered trademark of WMU®.

*Compiled as of January 2014 from Baptist Press reports and/or the SBC Executive Committee (state percentage includes shared ministry expenses). **Percentages as of February 2014.