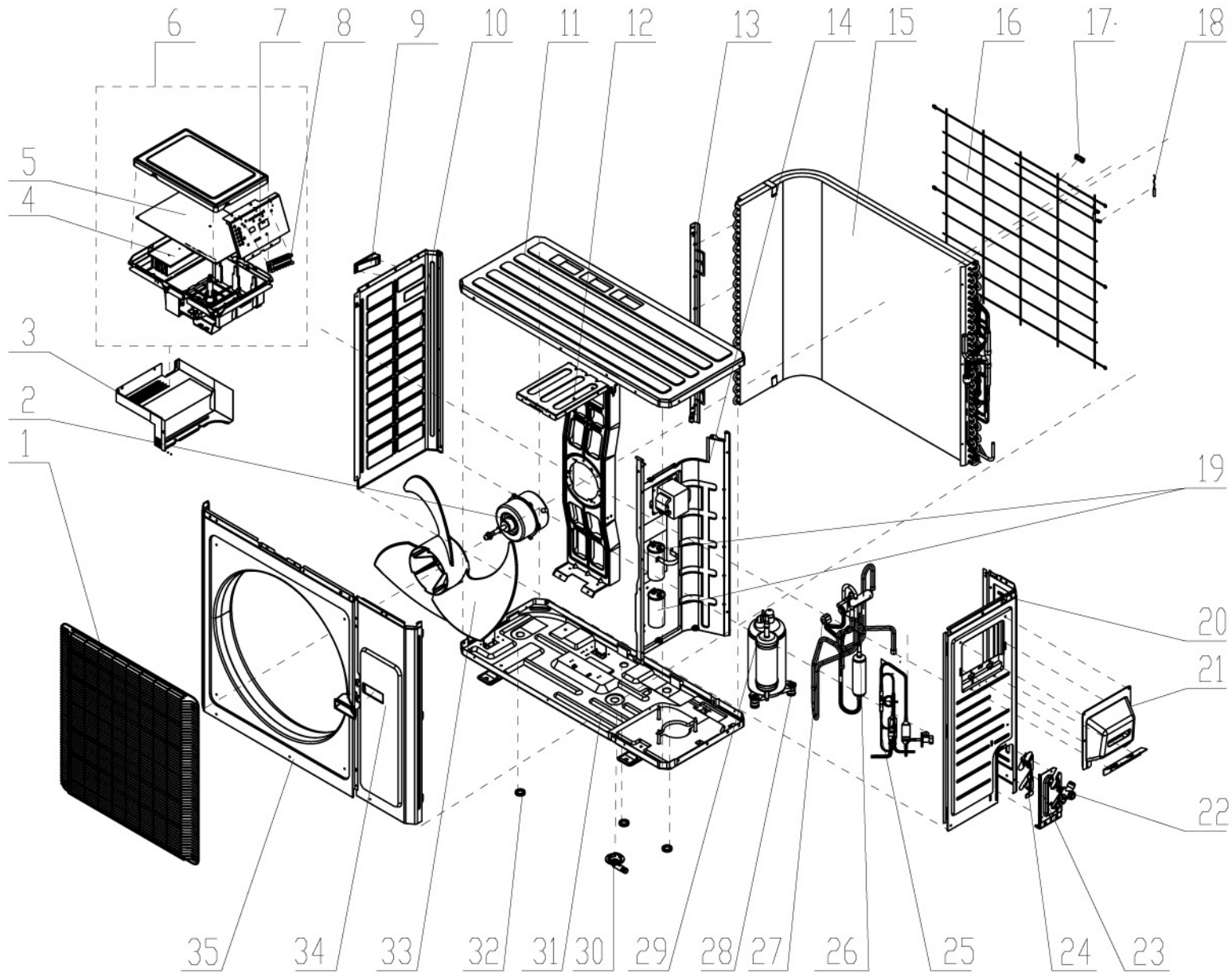


MODEL: EC18H241W

Nb.	Name	Part No.
1	Front protection grill	01473050
2	Outdoor Fan	1501506205
3	Electric Box (Fireproofing)	20113027
4	Heat sink	4901302801
5	Main Board	30148256
6	Electric control box top cover	02603939
7	Terminal Board Support	01713175A
8	Terminal Board	42010255
9	Left Handle	26235401
10	Left lateral cover	01305043P
11	Top Cover	01255006P
12	Motor mounting support	01705025
13	Condenser support plate	01175092
14	Division guard	01233163
15	Condenser Coil	01163427
16	Rear protection grill	01475013
17	Wire clamp	26115004
18	Condenser coil sensor	39000072
19	Capacitor	33010011
20	Right lateral cover	0130504402P
21	Handle assy	02113109
22	Liquid Valve	07133157
23	Valve support	01715020P
24	Baffle (valve support)	01365435P
25	Suction Valve	07135072
26	Reversing valve	03123863
27	Solenoid coil reversing valve	4300040045
28	Compressor rubber supports	00103873
29	Compressor set	
30	Drain Connector	06123401
31	Mounting Chassis	02803080P
32	Drain Plug	06813401
33	Outdoor Fan	10335005
34	Front cover	01305086P
35	Cabinet	0143500401P



MODEL: EC18H241W

No.	Name	Part No.
1	Front panel	20012328
2	Air Filter	11122091
3	Screw cover	24252016
4	Front case	2001232901
5	Vertical Air deflector	10512141
7	Left side Air deflector bearing	10512037
8	Rear case (chassis)	2220211701
9	Water collector's Rubber cap	76712012
10	Indoor fan bearing	26152025
11	Indoor fan bearing rubber holder	76512051
12	Indoor fan	10352030
13	Evaporator support	24212103
14	Evaporator coil	0100257204
15	Mounting plate	01252032
16	Motor Cover	26112316
17	Blower Electrical motor	15012136
18	Pipes clamp	26112188
19	Water Hose	0523001401
20	Swing motor	1521300101
21	Swing 's crank	10582070
22	Display Board	30565038
23	Protection grill	01472016
24	Air deflector	10512118
25	Central side Air deflector bearing	10542036
26	Transformer	321620027
27	Electrical Box (control box)	2011210801
28	Terminal Board	42011233
29	Connection Lid	20112081
30	PCB board (main Board)	30148236
30	Fuse	38742533
31	Shield cover of electric box	01592092
32	Electrical Box front Cover	20122154
33	PCB board Jumper	4202300108
35	Electrical Box rear Case	20302425
36	Ambient temperature sensor	390000451
37	Pipes' temperature sensor	390000598
38	Remote controller	305100482

