

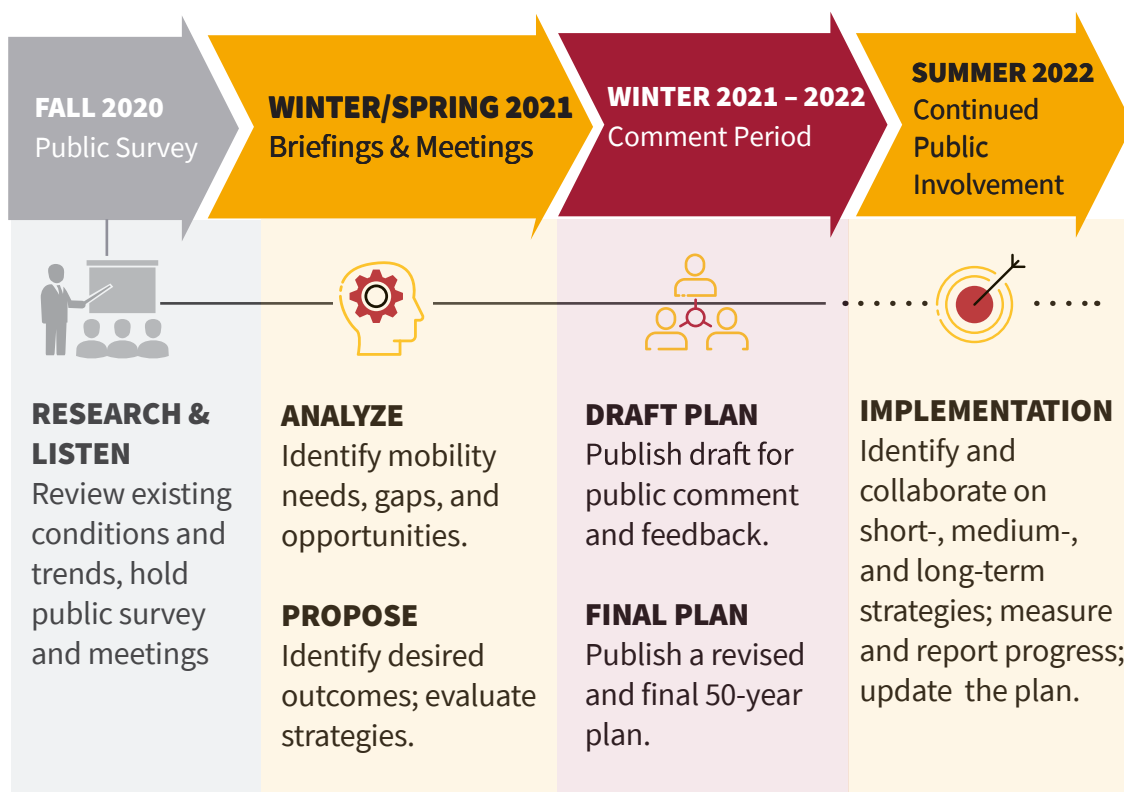
MARYLAND STATEWIDE TRANSIT PLAN

About the Plan

The Statewide Transit Plan (STP) will provide a 50-year vision of coordinated local, regional, and intercity transit across the state. This plan will define public transportation goals and strategies for Maryland's rural, suburban, and urban regions with a vision toward increasingly coordinated, equitable, and innovative mobility.

MDOT MTA is developing the STP with input from a broad range of partners, including other state agencies, local and regional governments, public and private transit providers, business and non-governmental organizations, and the public. The STP will build from existing state, regional, and local plans. The Plan will identify and address a number of strategic themes such as economic opportunity, safety, resiliency, and equity.

Plan Schedule:



3

**ROUNDS OF
STATEWIDE OUTREACH**



22

**LOCALLY-OPERATED
TRANSIT SYSTEMS**



50

YEAR PLAN

COMMENT AND PARTICIPATE

Submit a comment or question about the Plan, or request a briefing for your organization or community:
mtastp@mta.maryland.gov

CONTACT

The Project Team

- mtastp@mta.maryland.gov
- mta.maryland.gov/statewide-plan
- (410) 220-5497 leave a comment by voice message

