

Maryland Transit Administration Overview

Holly Arnold

Administrator

26 June 2025



Maryland Transit Administration

6

Service Modes

Core Bus, Light Rail, Metro, Mobility, MARC, and Commuter Bus



Core Bus

Serves Baltimore region with over 60 routes; largest mode by ridership

13th

Largest Transit System

Out of all transit agencies in the United States by total ridership in 2024



Light Rail

33 stations from Hunt Valley to Cromwell and BWI Airport; 57 miles of track; mid-life overhaul of vehicles underway

~3,500

Employees

1,600 operators, 700 mechanics, 80% union



Metro

Heavy rail service with 14 stations from Owings Mills to Johns Hopkins Hospital; fleet replacement underway

\$14.0B

In Total Asset Value

Includes assets for which MTA has direct capital responsibility



Mobility

Paratransit service for individuals with disabilities who are unable to use the MTA fixed route system; service is contracted

~\$1.2B

Operating Budget

For FY25, includes contracted service, salaries & benefits, LOTS



MARC

Commuter rail service with 3 lines; 42 stations in MD, WV, and DC; service is contracted

~\$5.7B

Capital Budget

For FY25-30, major projects include vehicle overhauls & replacements, transit facilities

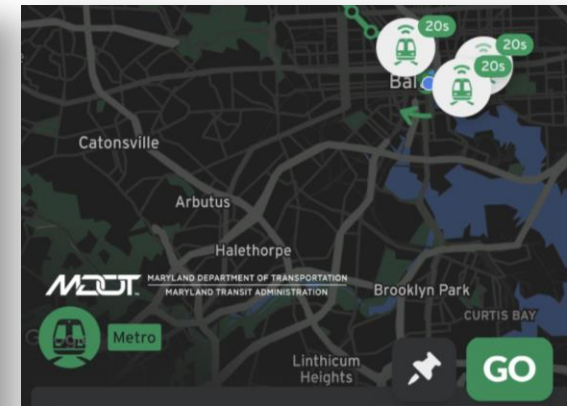


Commuter Bus

Peak-period limited-stop bus service; 4th largest system in United States; service is contracted

The Vision for MTA

- Frequent
- Reliable
- Easy



Recent Agency Momentum



Ridership up by 15%
Over 68 million rides
Increases and post-pandemic highs on all modes



Reduced agency hiring time by 40%
Hired more than 400 new operators for second consecutive year
Ended year with operator vacancy rate at 1%
Launched bus maintenance apprenticeship program



Preventable safety incidents down 5%
Person-related crimes down 13%
76% Part 1 crime clearance rate

Recent Agency Momentum



Transit Royale

Real-Time Improvements

Easier Fare Payments



**90%+ Real-Time
Availability**



Cut Service



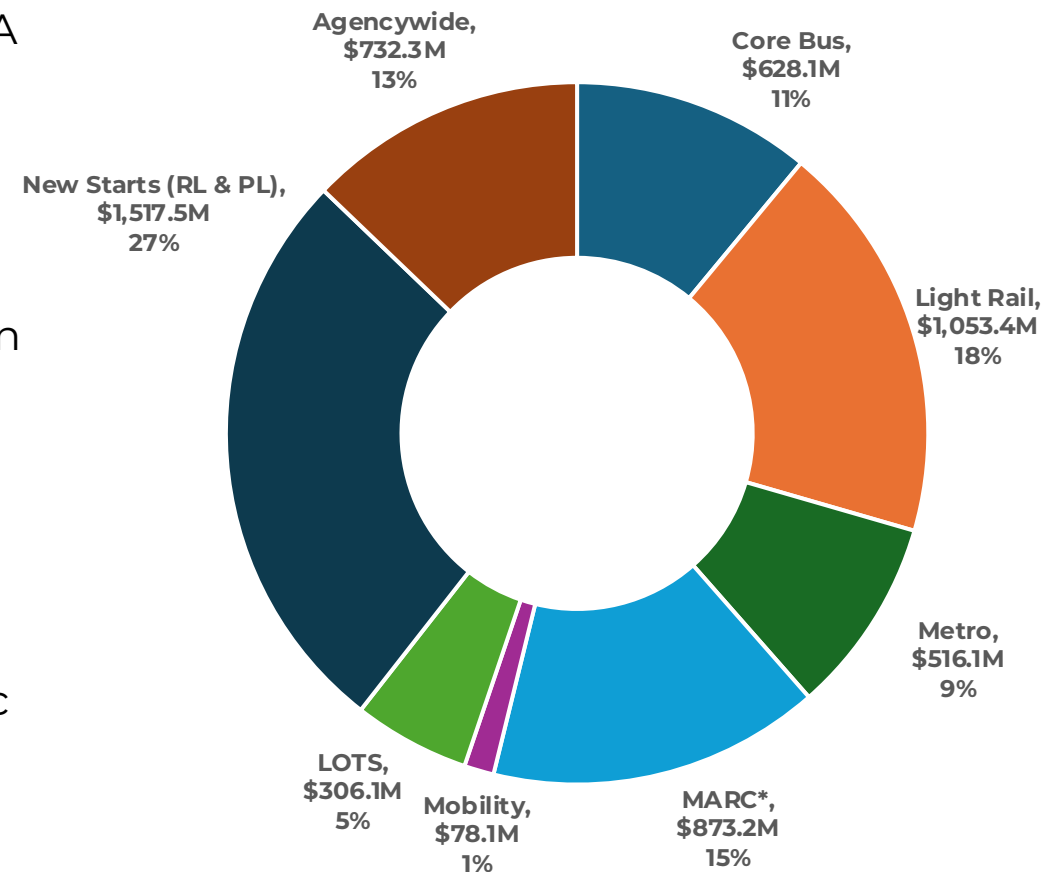
12%

2%

\$5.7 Billion 6-Year Capital Investment in MTA

Highlights of MTA's 6-year capital budget:

- Addressing **critical state of good repair needs** across MTA
- Advancing **planning efforts for the Baltimore Red Line**
- Annual purchase of buses to **support MTA's fleet and maintain needed service levels**
- **Modernizing Baltimore's Light Rail system** in conjunction with the State's \$213 million federal grant award
- **Fully matches all federal formula and discretionary grant programs** including the \$7+ billion Amtrak-led projects, including Frederick Douglass Tunnel, Susquehanna River Bridge, Baltimore Penn Station, the Bridge to Burgos Catenary Renewal Project, & Mid-Atlantic South Signal System Upgrades.



*includes Frederick Douglass Tunnel

Capital Projects – Expanding the System

Purple Line

- Over 74% complete
- 18 stations under construction and more than 56,000 feet of track laid
- Major construction continues at key locations
- Revenue service in Winter 2027

RED LINE

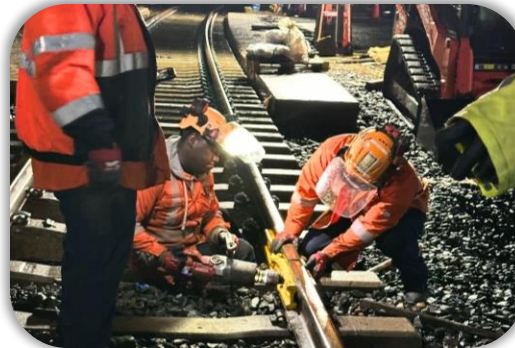
- Project advancing
- Light Rail announced as mode in June 2024
- Environmental study underway
- Ongoing engagement and outreach
- Alignment anticipated in 2025

Capital Projects – Prioritizing State of Good Repair

MARC Maintenance, Layover, & Storage Facilities



Metro and Light Rail Systems, Station Rehabilitations, & Maintenance of Way



Bus Replacements



Mobility Vehicle Replacements



Fare Collection System & Equipment Replacement



MARC Vehicle Overhauls and Replacements



Capital Projects – Modernizing Infrastructure

Metro Railcar and Train Control Replacement



- Replacement of aging Metro fleet and installation of new Communication-Based Train Control system
- Improved safety, reliability, frequency, and rider experience
- Testing underway

Light Rail Modernization Program



- Replacement of aging Light Rail Fleet with low-floor, accessible vehicles
- Program includes facility modernization and station upgrades
- \$213 million federal award

Frederick Douglass Tunnel (Amtrak Lead)



- Centerpiece of B&P Tunnel replacement program
- Project includes new, fully ADA-accessible West Baltimore MARC station
- Will triple capacity and increase travel speeds
- Associated Northeast Corridor projects

THANK YOU