

MSC



115

ARCH STREET

OLD CITY | PHILADELPHIA, PA

802 SF GROUND FLOOR COMMERCIAL CONDOMINIUM FOR
SALE OR LEASE



113 ARCH STREET

DEMOGRAPHICS

Center City Trade Area
From the River to River between Girard Avenue & Tasker Avenue

EST. POPULATION	EST. MEDIAN HH INCOME
206,964	\$95,215
EST. EMPLOYEES	EST. MEDIAN AGE
227,743	35.5

JOIN THESE AREA TENANTS



PROPERTY DETAILS

- ▶ Excellent architectural curb appeal and interior features like exposed brick, 13' ceilings and abundant natural light
- ▶ Rare opportunity to purchase or lease a boutique retail commercial condominium
- ▶ Old City neighborhood offers a dense and affluent mix of residential, tourist and office populations
- ▶ Ideal uses include office, showroom, medical or retail

The information contained herein has been obtained from sources deemed reliable. MSC cannot verify it and makes no guarantee, warranty or representation about its accuracy. Any projections, opinions, assumptions or estimates provided by MSC are for discussion purposes only and do not represent the current or future performance of a property, location or market.



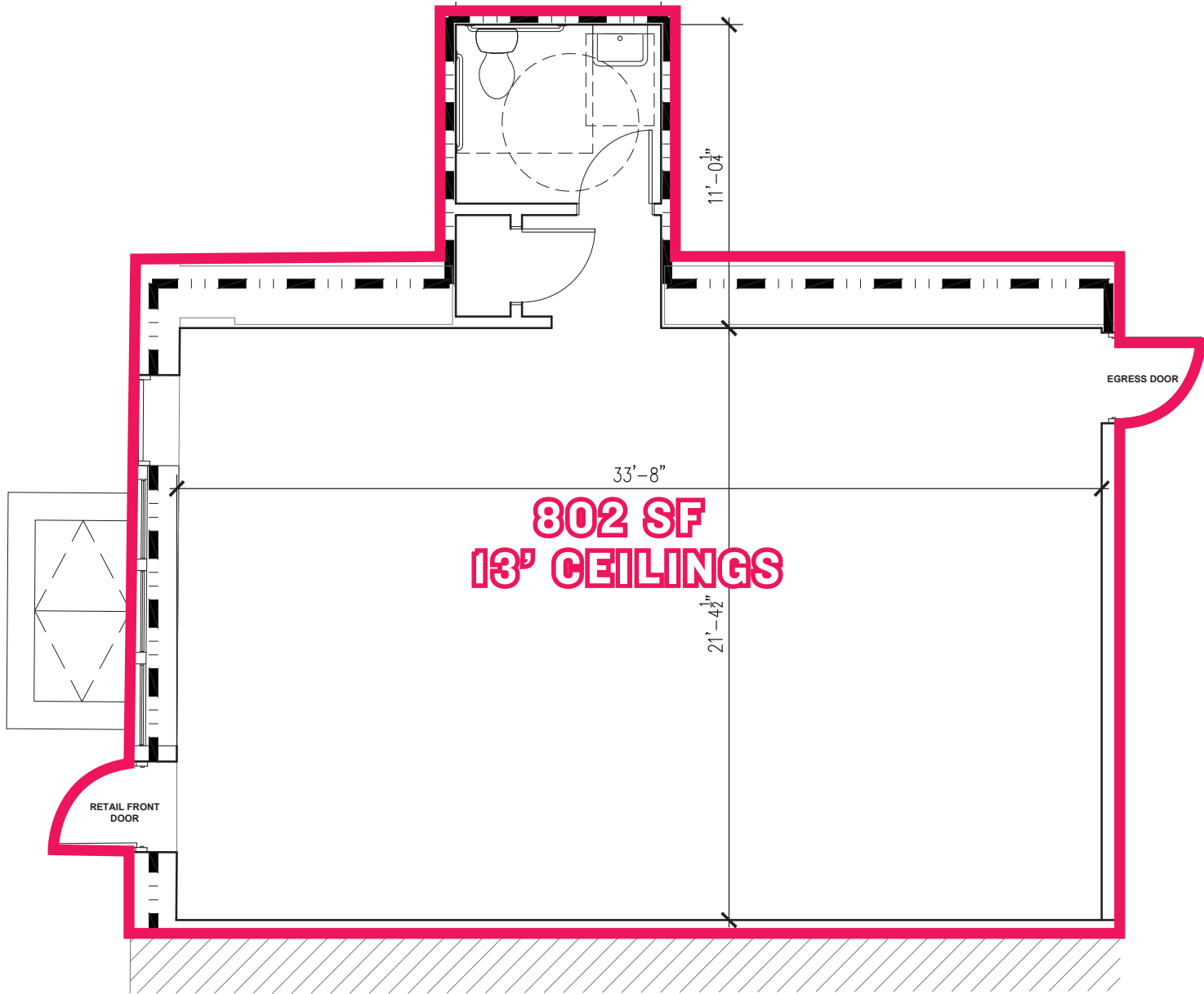






FLOOR PLAN

ARCH STREET



AERIAL



MSC

JULIA MCMANUS

jmcmanus@hellomsc.com

267.622.3098

JOSH WEISS

jweiss@hellomsc.com

215.605.8355

