

MSC x  Midwood

WALNUT STREET

(15TH STREET BETWEEN WALNUT & LOCUST)

RITTENHOUSE SQUARE
PHILADELPHIA, PA

COMPASS

2,300 SF
RETAIL/RESTAURANT
FOR LEASE

& pizza

STUFFED CRUST

ALL OF OUR
CRUST IS
MADE FROM
SCRATCH



1430 WALNUT STREET

DEMOGRAPHICS

Center City Trade Area
From the River to River between Girard Avenue & Tasker Avenue

EST. POPULATION

206,964

EST. MEDIAN HH INCOME

\$95,215

EST. EMPLOYEES

227,743

EST. MEDIAN AGE

35.5

PROPERTY DETAILS

- ▶ *2,300 SF second-generation restaurant opportunity*
- ▶ *Prime visibility with expansive glass frontage and signage*
- ▶ *Located steps from Philadelphia's premier retail corridor, Walnut Street, and Rittenhouse Square*
- ▶ *Positioned at the convergence of dense residential, national retail, strong nightlife and daytime office population, driving true 24/7 demand*

JOIN THESE NEARBY TENANTS

SPiN *Levain* BAKERY **WARBY PARKER**

COMPASS **LaserAway**

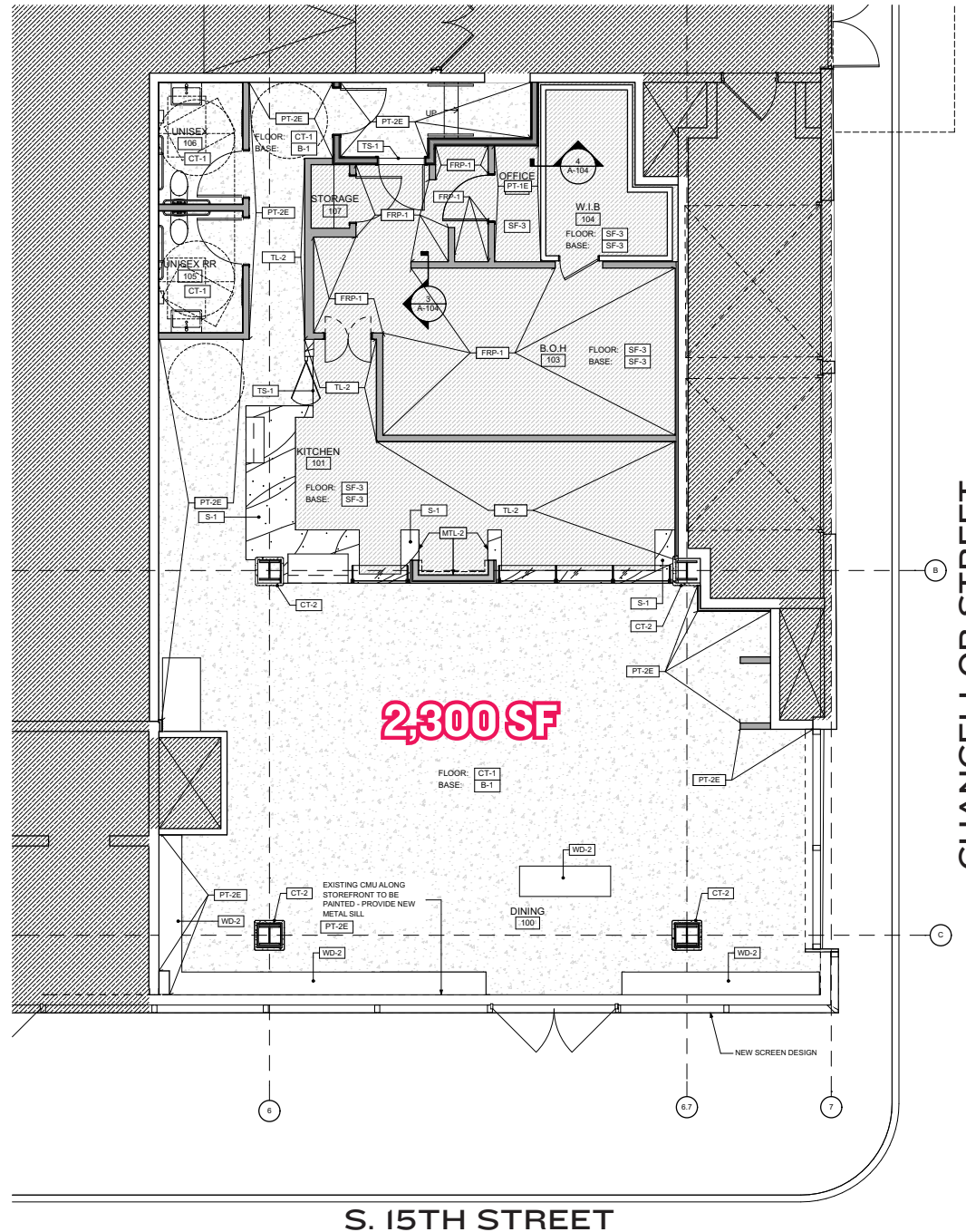
Pitcher and Singer

FLIGHT CLUB
SOCIAL DARTS™

The information contained herein has been obtained from sources deemed reliable. MSC cannot verify it and makes no guarantee, warranty or representation about its accuracy. Any projections, opinions, assumptions or estimates provided by MSC are for discussion purposes only and do not represent the current or future performance of a property, location or market.



FLOOR PLAN



S. 15TH STREET

CHANCELLOR STREET

INTERIOR PHOTOS



The information contained herein has been obtained from sources deemed reliable. MSC cannot verify it and makes no guarantee, warranty or representation about its accuracy. Any projections, opinions, assumptions or estimates provided by MSC are for discussion purposes only and do not represent the current or future performance of a property, location or market.

MSC

INTERIOR PHOTOS



NEIGHBORHOOD MAP

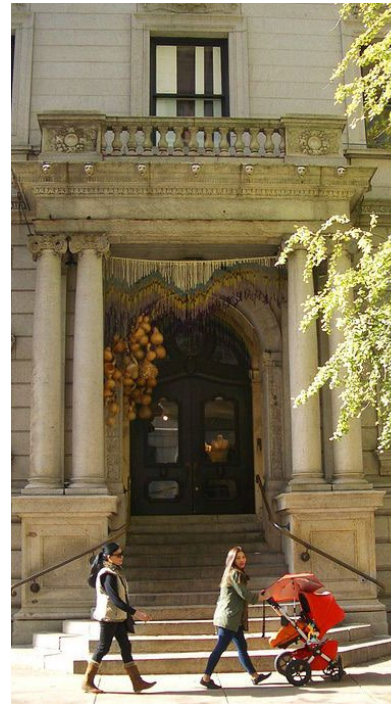
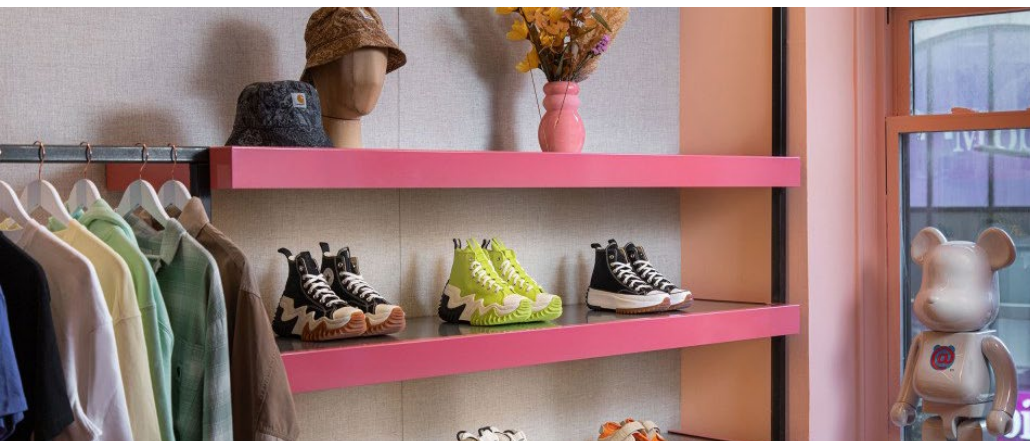
This map displays the Dilworth Park neighborhood in Philadelphia, with a grid of streets including Market St, Chestnut St, Sansom St, Walnut St, Locust St, Spruce St, 18th St, 17th St, 16th St, 15th St, Broad St, Juniper St, and 13th St. A large green area at the top right is labeled 'DILWORTH PARK' and contains a line drawing of the Independence Hall building. The map is populated with logos for various businesses and services, such as Starbucks, Dunkin', Wells Fargo, CVS, and many local restaurants and shops. A white box at the top left contains the text 'NEIGHBORHOOD MAP'.

RITTENHOUSE SQUARE

AN OVERVIEW



MSC



RITTENHOUSE SQUARE IS THE MOST FAMOUS NEIGHBORHOOD IN PHILADELPHIA

-serving as the epicenter of retail, dining, daytime office traffic, hotels, affluent residential, and nightlife. The trade area is positioned with unmatched access to Center City's most impactful traffic drivers. From an ultra-affluent residential base, to over **44M SF of office**, to an acclaimed arts district and a flourishing tourism base, it truly is a live/work/play 24 hour neighborhood. As the **5th most walkable downtown** in the country, it is easily accessed by the various other highly connected and flourishing Philadelphia neighborhoods. It provides maximum exposure along with unparalleled national co-tenancy in a downtown setting and serves as the ideal city entry point for most national retailers and restaurants.

WALNUT STREET

RETAIL



rag & bone
NEW YORK



Glossier.

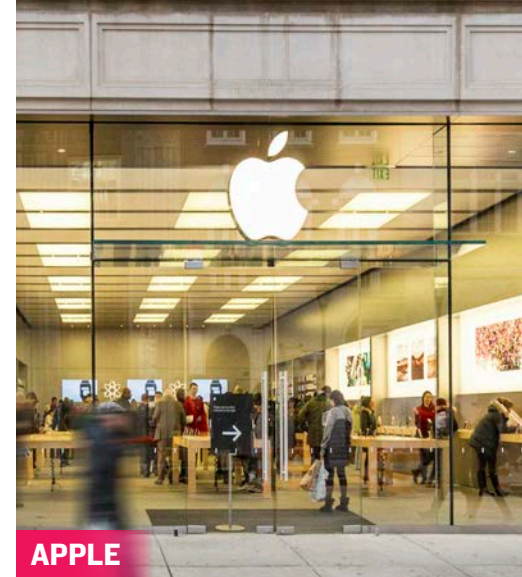


CB2

ARITZIA



ALO



APPLE


VINCE.



FAHERTY



ANTHROPOLOGIE

lululemon  athletica



WARBY PARKER

VERONICA BEARD



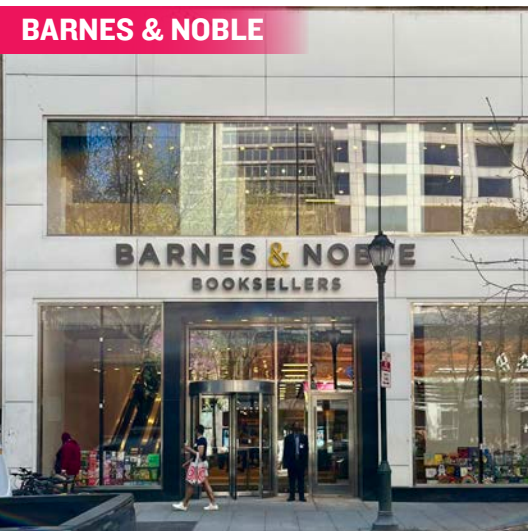
MADEWELL

 gorjana

Walnut and Chestnut Streets, along with the connecting numbered streets, have become attractive locations for both high-end and fast-fashion retailers who value the city's highly concentrated, cosmopolitan and diverse customer base. Walnut Street is the city's premier "high street" retail corridor with four primary blocks that span Broad Street to 18th Street. With a mix of upscale apparel/contemporary stores, athleisure, digitally native brands, jewelry, and furniture, **WALNUT STREET'S LEASING ACTIVITY IS THE STRONGEST IT HAS EVER BEEN.**

CHESTNUT STREET

RETAIL



BIGGER BOX TENANTS

such as Barnes & Noble, Bloomingdale's Outlet, Uniqlo, Nordstrom Rack and Sephora mixed with local fashion institutions such as Boyd's Department Store, makes Chestnut Street a vibrant and diverse retail corridor that benefits from strong pedestrian counts and cross-shopping with neighboring Walnut Street.



HEYDAY



RESCUE SPA



BARRYS BOOTCAMP

FITNESS, HEALTH & WELLNESS



SOULCYCLE



COREPOWER YOGA



EQUINOX



SOLIDCORE

HOTELS



NIGHT LIFE

RESTAURANTS

From renowned Stephen Starr, Michael Schulson and Cook N Solo restaurants to local James Beard award-winning chefs, Rittenhouse Square is a culinary mecca and receives national recognition for its booming restaurant scene.



vernick
food & drink



QSR / SPECIALTY

Rittenhouse Square's density, day-time population and unparalleled exposure makes it an ideal location for national QSRs looking to enter the Philadelphia market.

Van Leeuwen



MSC

&pizza



DOUGLAS GREEN
dgreen@hellomsc.com
215.883.7400

BRITTANY GOLDBERG
bgoldberg@hellomsc.com
610.299.9729