



MSC

GERMANTOWN AVENUE

1400 GERMANTOWN
OLDE KENSINGTON | PHILADELPHIA, PA

SMALL TURN-KEY OFFICE
OR RETAIL FOR LEASE |
1,000 SF + 700 SF
BASEMENT SPACE

1400 GERMANTOWN AVENUE

DEMOGRAPHICS

EST. POPULATION

1 mi **74,340**

EST. MEDIAN HH INCOME

1 mi **\$84,947**

EST. HOUSEHOLDS

1 mi **32,621**

EST. MEDIAN AGE

1 mi **31.5**



PROPERTY DETAILS

- ▶ Small Corner For Lease: 1,000 SF + 700 SF Basement Space
- ▶ Currently set up as an office with: 4 Private Offices, Kitchenette, ADA Bathroom, Conference Room in Basement with an Additional Bathroom
- ▶ Space can easily convert to traditional retail space, fit for a variety of concepts
- ▶ Along the creative corridor and artist hub surrounding N. American Street, with neighbors including: The Ray, Crane Arts, The Clay Studio, The Loom Philly, Billy Penn Studios, Pig Iron Theatre, and tons of local galleries
- ▶ Available Now

JOIN NEIGHBORING TENANTS

CHAR

Laser Wolf
לזר וולף

REANIMATOR
COFFEE
ROASTERS

WISSAHICKON
BREWING CO
EST. Natural Craft 2015

WIRLYBIRD
— COFFEE —

STATESIDE
URBANCRAFT
— VODKA —

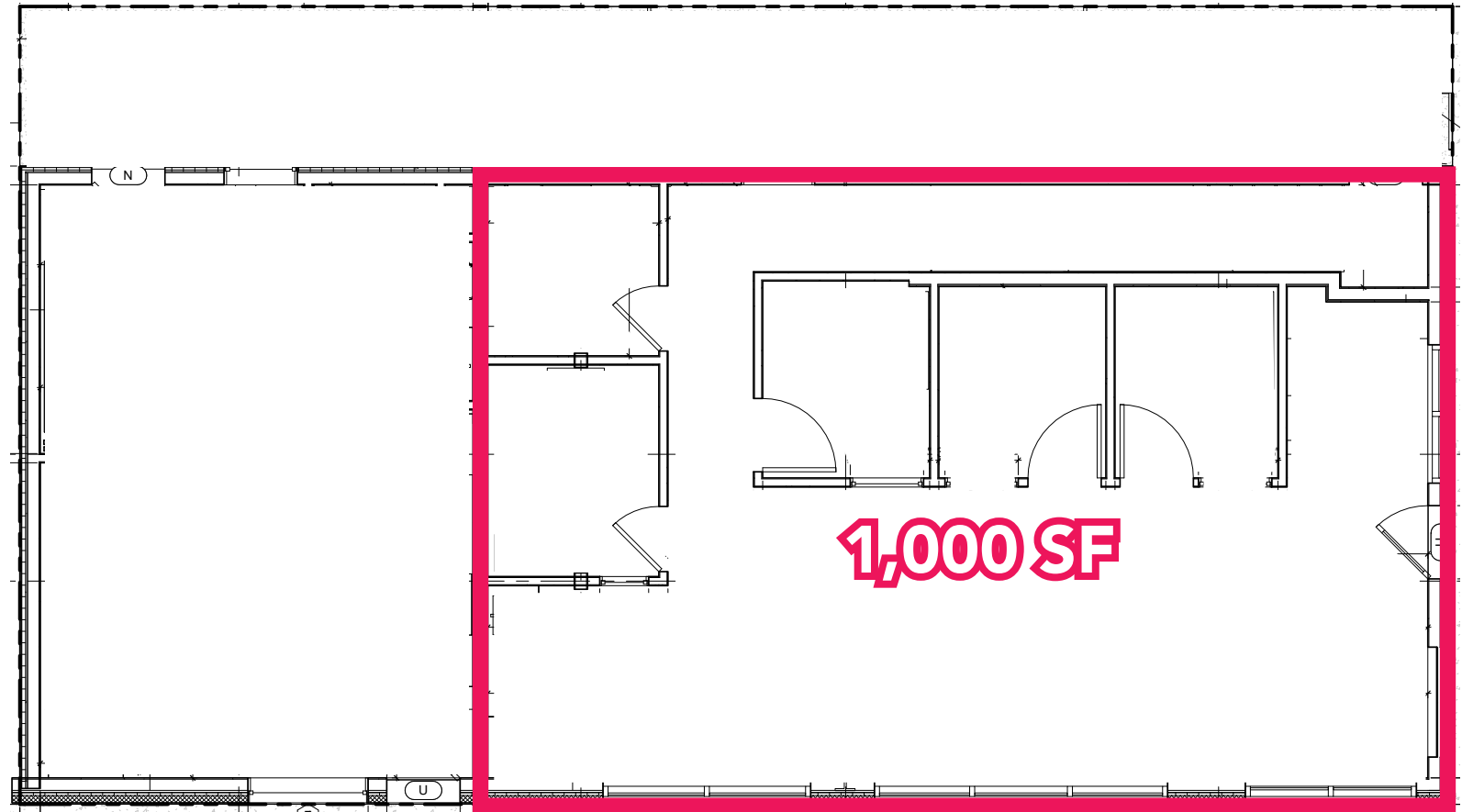
heart + paw



Note
TO
Self
WELLNESS

icebox
project
space

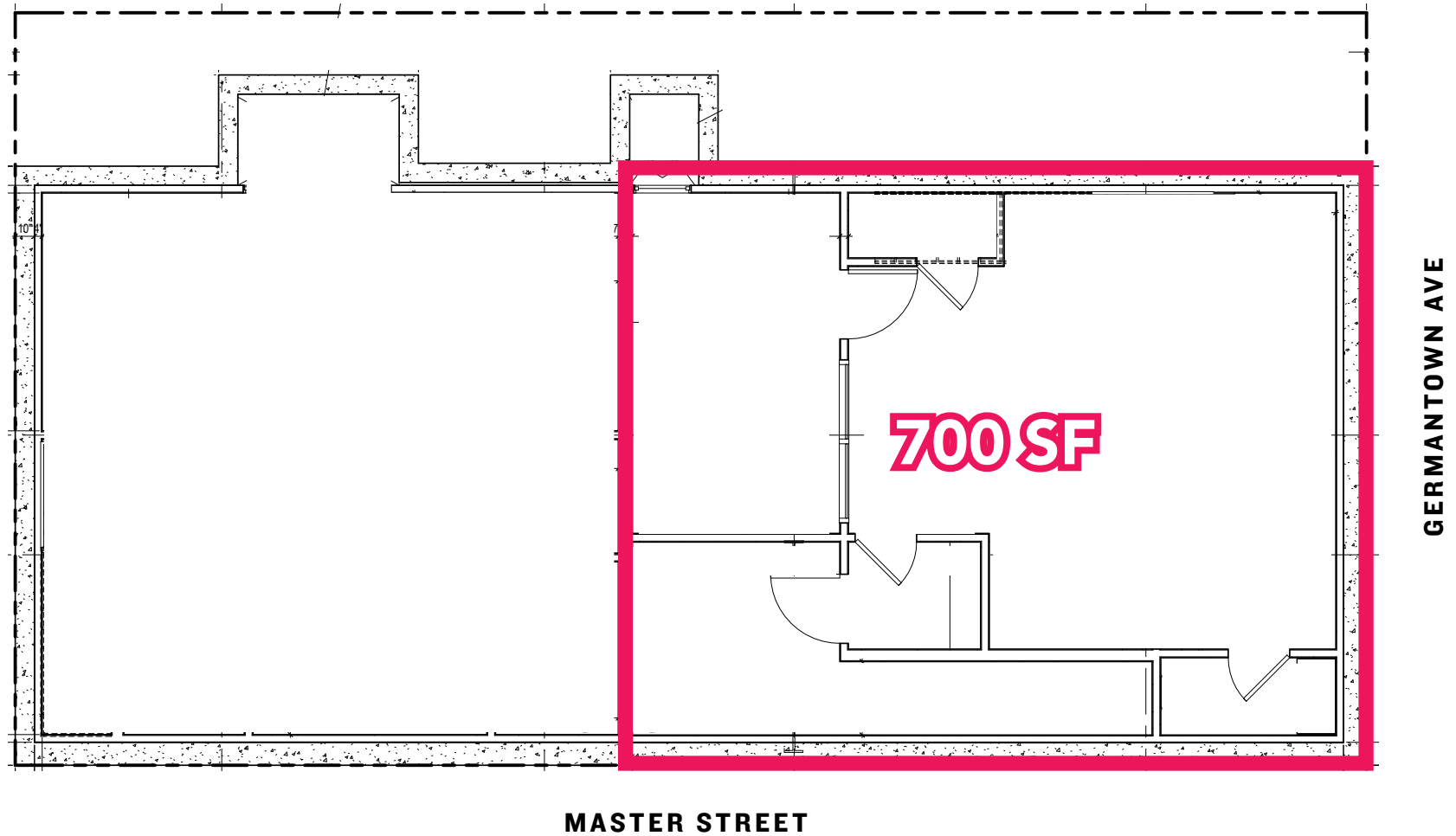
FIRST FLOOR PLAN



GERMANTOWN AVE

MASTER STREET

BASEMENT FLOOR PLAN



GROUND FLOOR



GROUND FLOOR



BASEMENT



AERIAL



The information contained herein has been obtained from sources deemed reliable. MSC cannot verify it and makes no guarantee, warranty or representation about its accuracy. Any projections, opinions, assumptions or estimates provided by MSC are for discussion purposes only and do not represent the current or future performance of a property, location or market.

MSC

MSC

JULIA MCMANUS

jmcmamus@hellomsc.com

267.622.3098

