

MSC

505

N. 15TH STREET

PHILADELPHIA, PA

PRIME LOCATION AT 15TH & WOOD - A HIGHLY TRAFFICKED
INTERSECTION IN CENTER CITY PHILADELPHIA



305 N 15TH STREET

JOIN THESE AREA TENANTS

DaVita.



Sabrina's Cafe



Drexel
UNIVERSITY

PROPERTY DETAILS

- ▶ 1,680 SF of ground-floor retail space plus full basement for storage or additional use
- ▶ Strong pedestrian and vehicle traffic ensures constant visibility and footfall
- ▶ Excellent advertising and signage potential on a highly visible corner
- ▶ Close proximity to public transportation and major city arteries

DEMOGRAPHICS

EST. POPULATION

1 mi 95,180

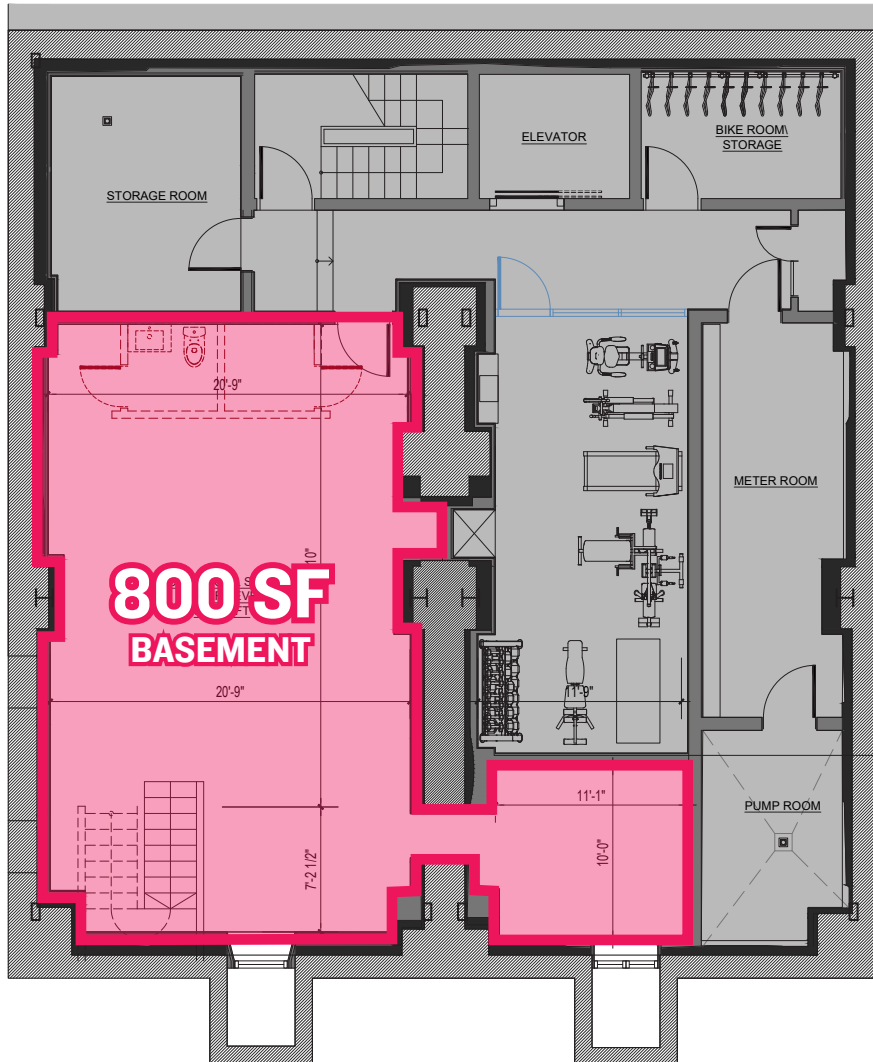
EST. AVERAGE HH INCOME

1 mi \$150,159

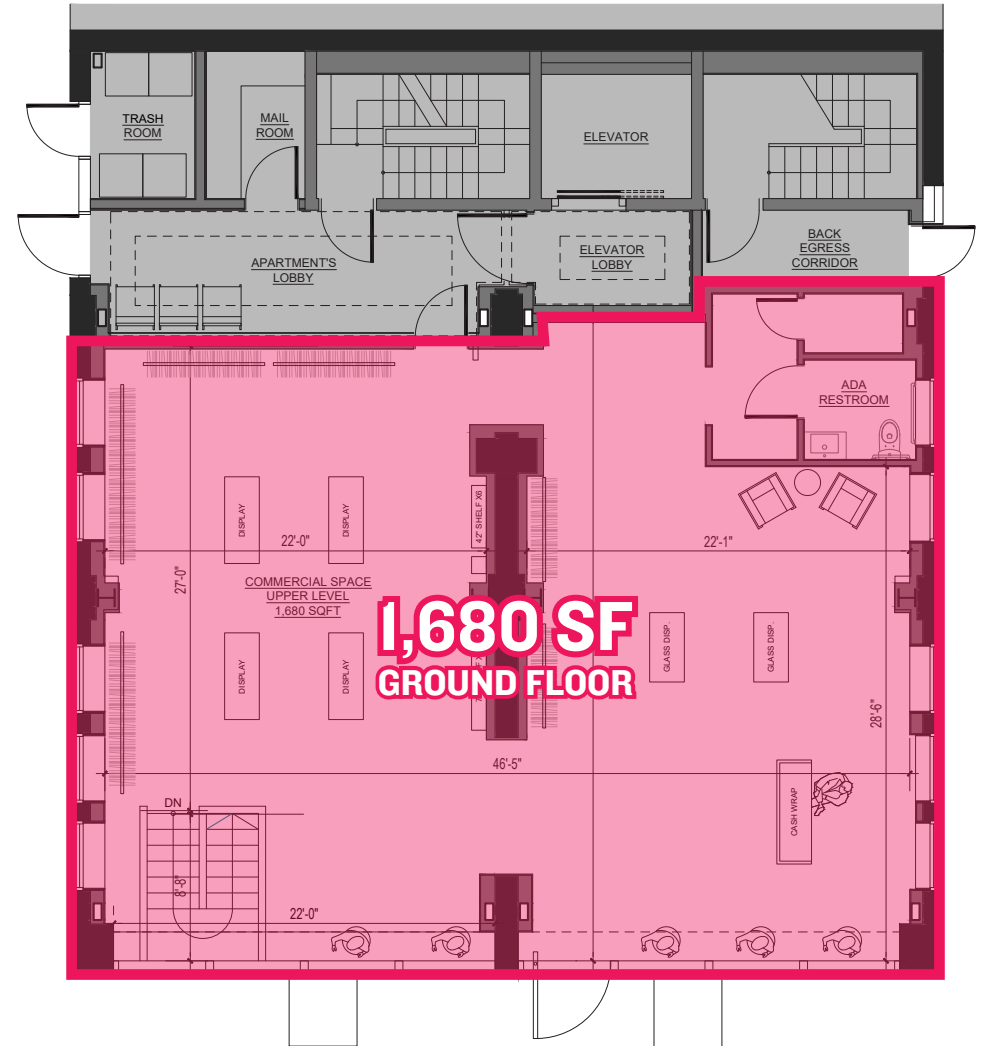
EST. MEDIAN AGE

1 mi 36.2

FLOOR PLAN



800 SF BASEMENT

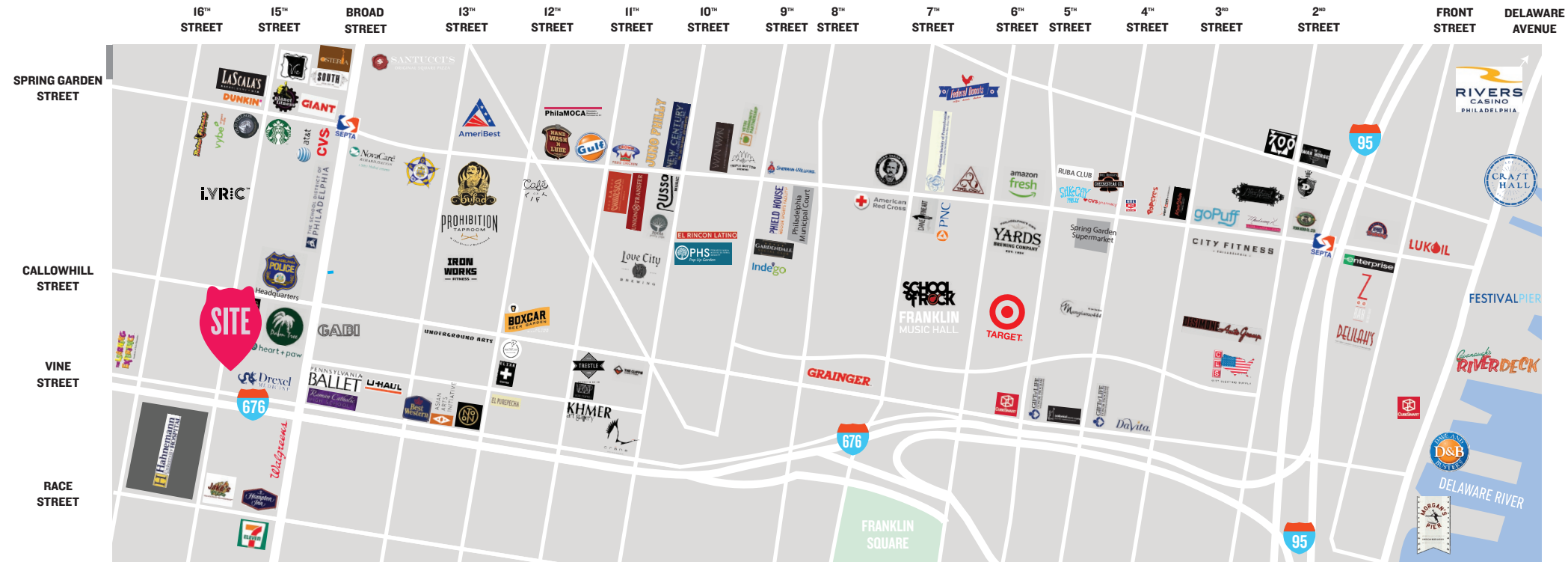


1,680 SF GROUND FLOOR

The information contained herein has been obtained from sources deemed reliable. MSC cannot verify it and makes no guarantee, warranty or representation about its accuracy. Any projections, opinions, assumptions or estimates provided by MSC are for discussion purposes only and do not represent the current or future performance of a property, location or market.

MSC

AERIAL



The information contained herein has been obtained from sources deemed reliable. MSC cannot verify it and makes no guarantee, warranty or representation about its accuracy. Any projections, opinions, assumptions or estimates provided by MSC are for discussion purposes only and do not represent the current or future performance of a property, location or market.

MSC

MSC

JACOB COOPER

jcooper@hellomsc.com

215.813.3784

ANNELLYSE CHAN

achan@hellomsc.com

732.533.3363

