



MSC

# FRANKFORD AVENUE

FISHTOWN | PHILADELPHIA, PA

IMPECCABLY RESTORED WAREHOUSE  
10,806 SF FOR LEASE





# 1811 FRANKFORD AVENUE

JOIN NEIGHBORING TENANTS



## PROPERTY DETAILS

- ▶ Impeccable restoration of two-story warehouse for lease
- ▶ Architectural details include two-story atrium, exposed beams and ductwork, and spectacular wooden A-frame roof with skylights
- ▶ Owner-occupied gallery with flexible possession date for next tenant
- ▶ Rare large format turn-key space located at 50-yard line of bustling Frankford Avenue in Fishtown
- ▶ Surrounded by restaurants, boutiques and cultural destinations

## DEMOGRAPHICS

Center City Trade Area  
From the River to River between Girard Avenue & Tasker Avenue

EST. POPULATION

206,964

EST. MEDIAN HH INCOME

\$95,215

EST. MEDIAN AGE

35.5

EST. EMPLOYEES

227,743

The information contained herein has been obtained from sources deemed reliable. MSC cannot verify it and makes no guarantee, warranty or representation about its accuracy. Any projections, opinions, assumptions or estimates provided by MSC are for discussion purposes only and do not represent the current or future performance of a property, location or market.

**MSC**

























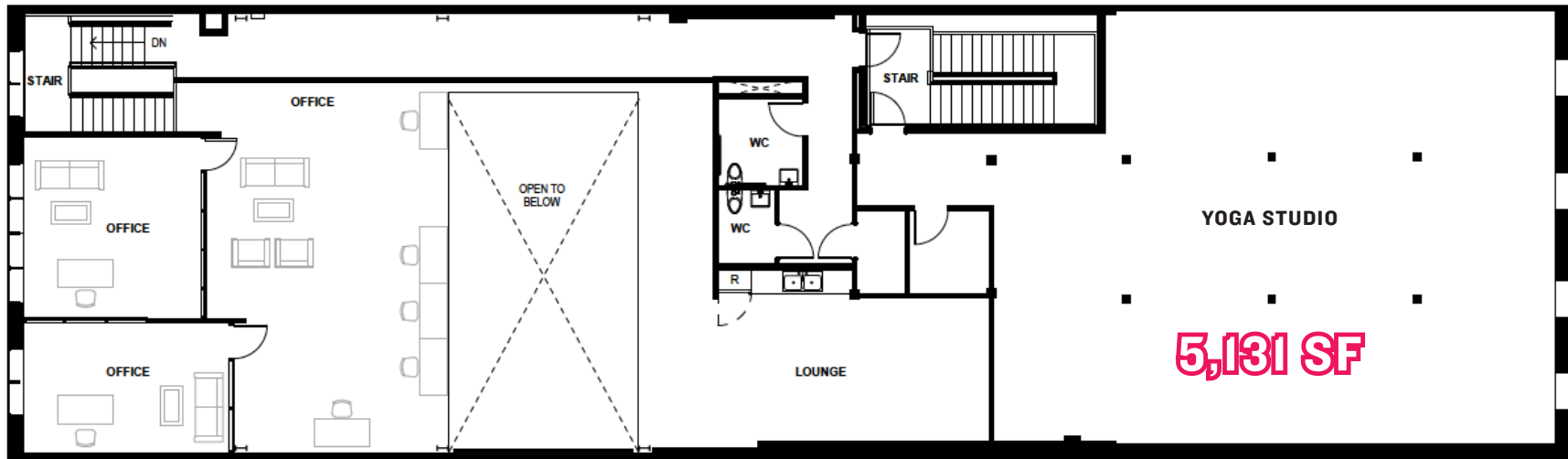


# YOGA STUDIO

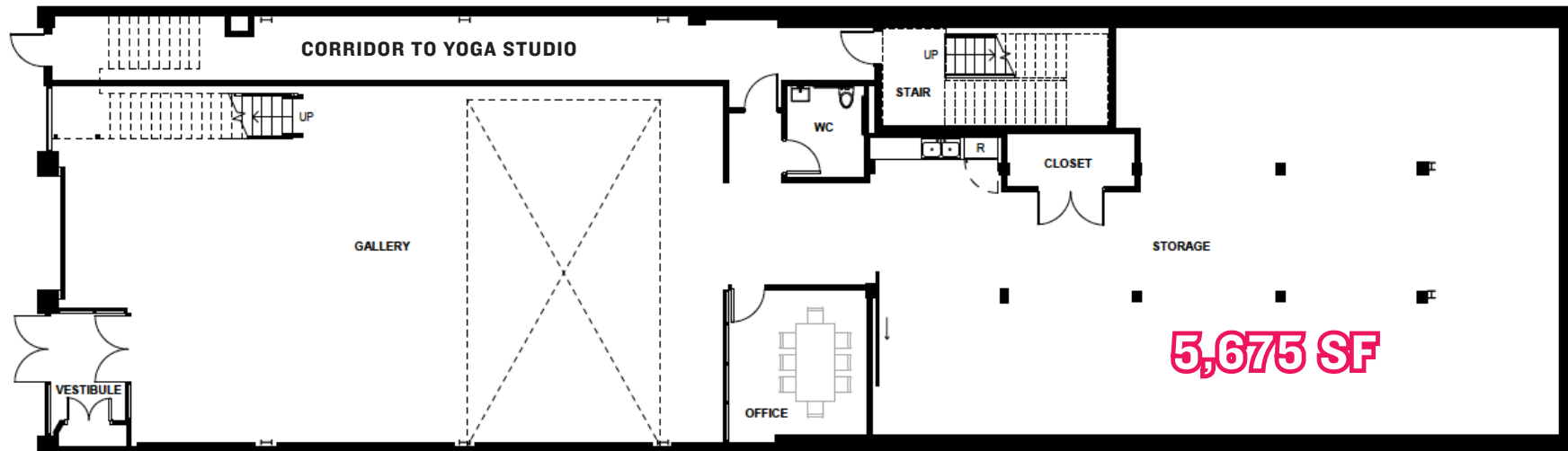




## FLOOR PLAN



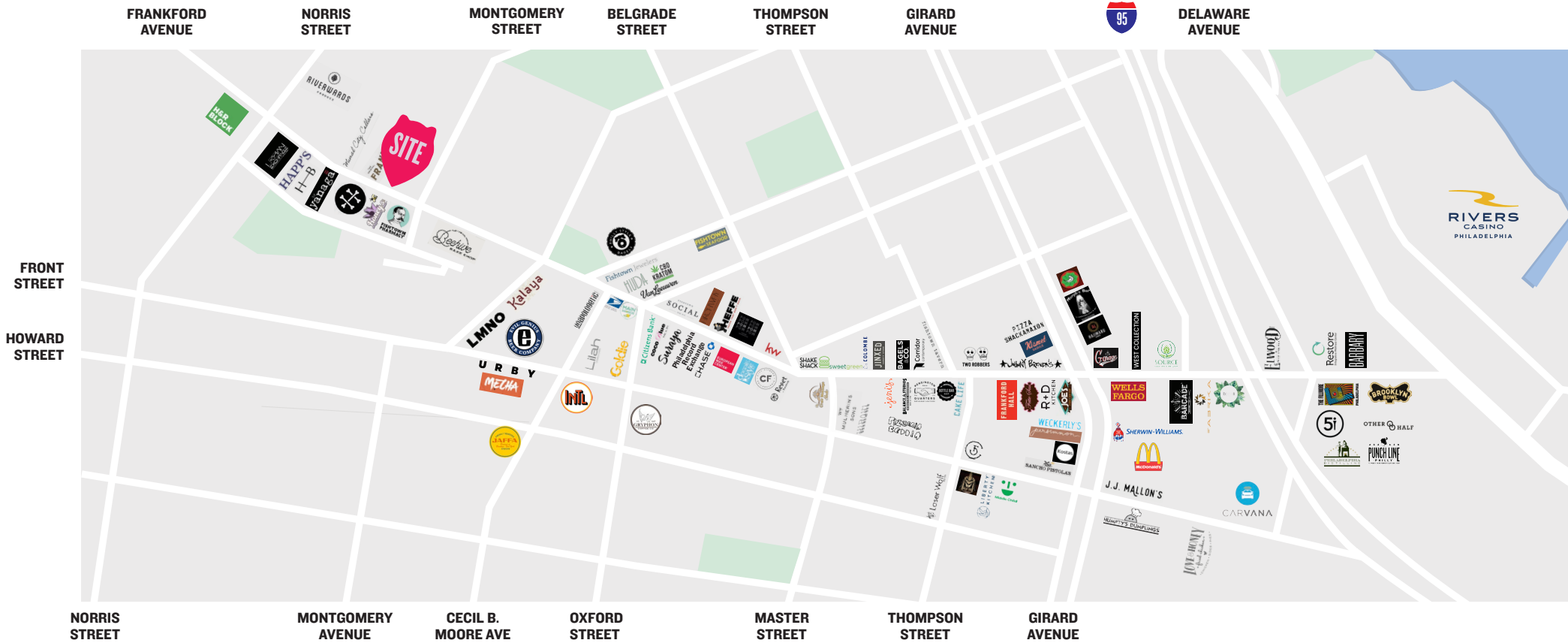
**SECOND FLOOR**



**GROUND FLOOR**



# AERIAL





**JOSH WEISS**

jweiss@hellomsc.com

215.883.7389

**STEFANIE GABEL**

sgabel@hellomsc.com

215.570.5486

**MSC**

