

MSC

510

N. COLUMBUS BOULEVARD

NORTHERN LIBERTIES | PHILADELPHIA, PA

6,907 SF AVAILABLE FOR LEASE



510 N. COLUMBUS BOULEVARD

JOIN NEIGHBORING TENANTS



PROPERTY DETAILS

- ▶ Located in the budding nightlife/ entertainment corridor of Northern Liberties in the iconic Philadelphia Warehousing and Cold Storage Company Building, built in 1891
- ▶ Directly across from the \$2.2B mixed-use, 4-acre Penn's Landing development that will amass 12 buildings, totaling 3.5 million square feet of homes, offices and shops
- ▶ Conveniently located off of Delaware Avenue and Spring Garden Streets, with easy access to I-95 and I-76
- ▶ Motivated landlord willing to provide capital
- ▶ Opportunity to connect this space with neighboring building and combine the retail with a "canopy" over Beach Street walkway

DEMOGRAPHICS

Center City Trade Area
From the River to River between Girard Avenue & Tasker Avenue

EST. POPULATION

188,131

EST. MEDIAN HH INCOME

\$99,150

EST. MEDIAN AGE

35

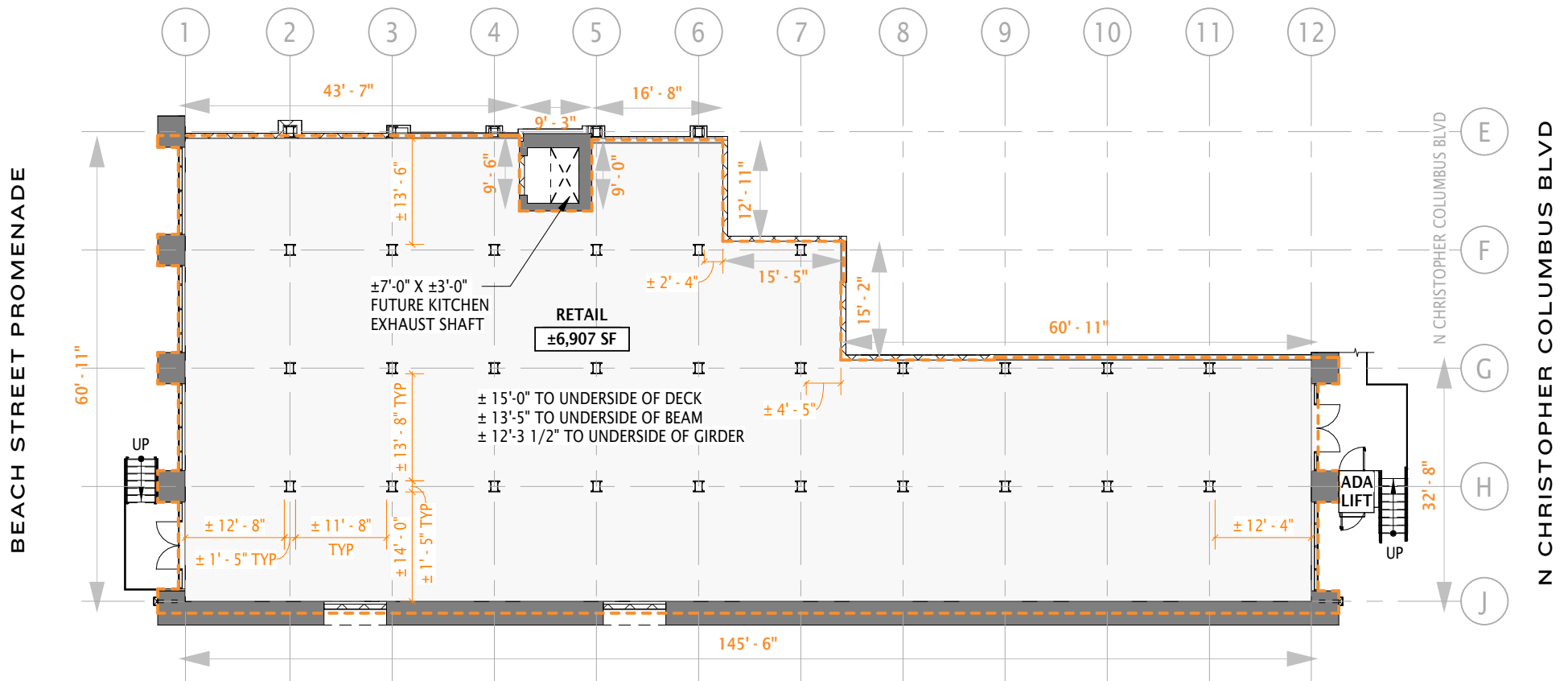
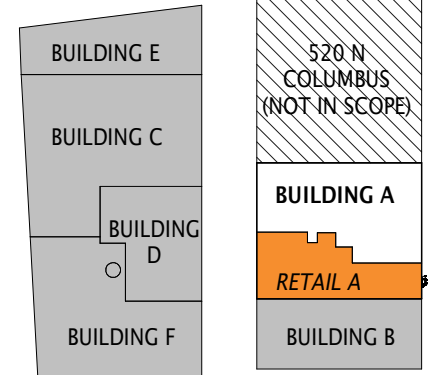
EST. EMPLOYEES

258,822

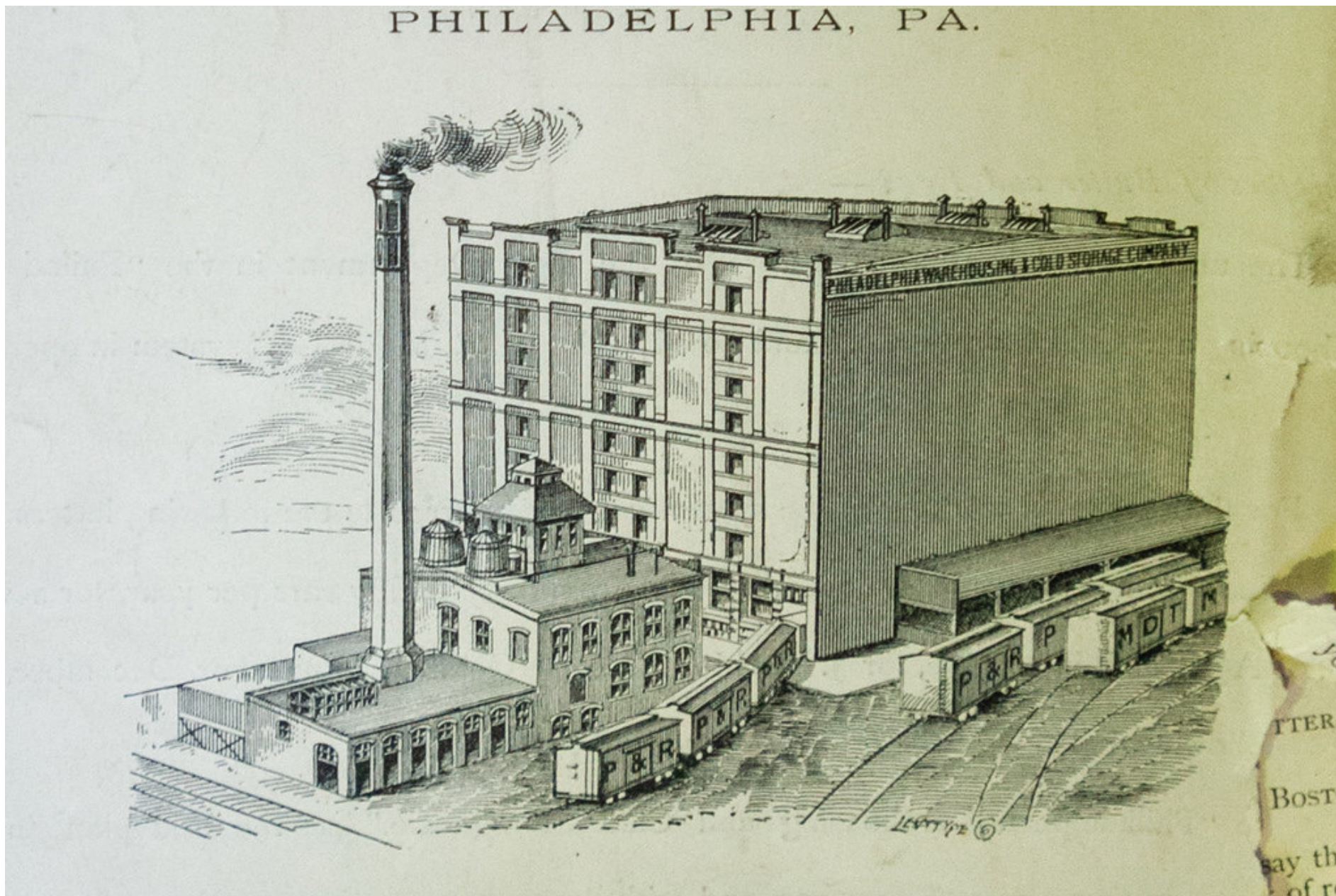
The information contained herein has been obtained from sources deemed reliable. MSC cannot verify it and makes no guarantee, warranty or representation about its accuracy. Any projections, opinions, assumptions or estimates provided by MSC are for discussion purposes only and do not represent the current or future performance of a property, location or market.

MSC

FLOOR PLAN



PHOTO



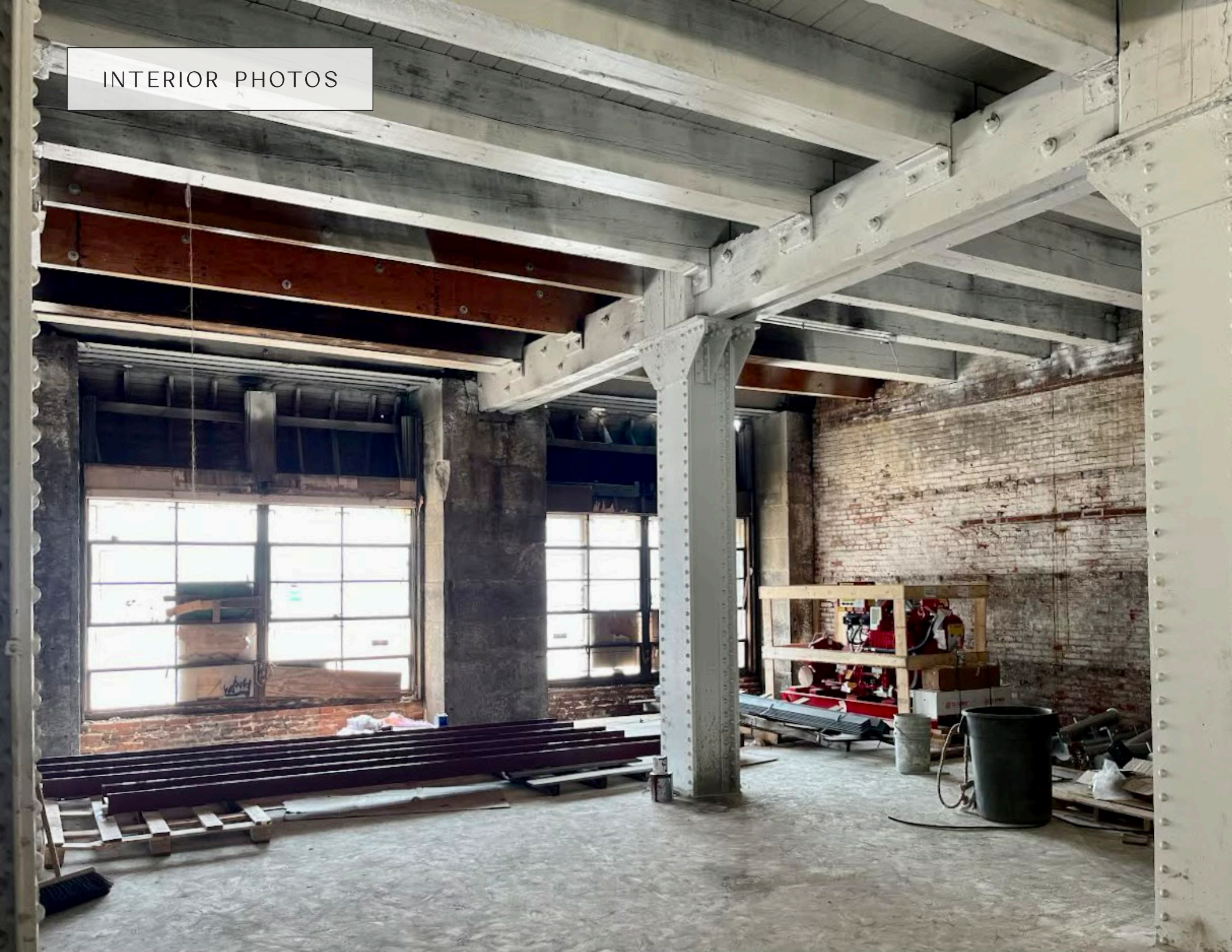
The information contained herein has been obtained from sources deemed reliable. MSC cannot verify it and makes no guarantee, warranty or representation about its accuracy. Any projections, opinions, assumptions or estimates provided by MSC are for discussion purposes only and do not represent the current or future performance of a property, location or market.

MSC

INTERIOR PHOTOS



INTERIOR PHOTOS



RENDERINGS





AERIAL



MSC



JULIA MCMANUS

jmcmamus@hellomsc.com

215.883.7376

JACOB COOPER

jcooper@hellomsc.com

215.883.7402