



MSC

SNYDER
AVENUE

PHILADELPHIA, PA

2,495 SF RETAIL /
OFFICE FOR LEASE

2300 SNYDER AVENUE



PROPERTY DETAILS

- ▶ Opportunity for multiple retail uses such as Restaurant, Financial Services, Medical Office and Urgent Care
- ▶ Ground floor retail space plus basement. Easily vented for restaurant users; the space features 9 dedicated parking spaces
- ▶ Property draws from surrounding dense residential population, with over 391,772 people in a 3 mile radius and an average household income of \$120,000
- ▶ In close proximity to prominent national retailers such as Home Depot, PetSmart, Sprouts, ShopRite, and Dollar General

DEMOGRAPHICS

EST. POPULATION

.5 mi 19,638

1 mi 63,963

3 mi 391,772

EST. EMPLOYEES

.5 mi 2,703

1 mi 13,192

3 mi 294,917

EST. AVERAGE HH INCOME

.5 mi \$78,468

1 mi \$101,834

3 mi \$119,980

JOIN THESE AREA TENANTS



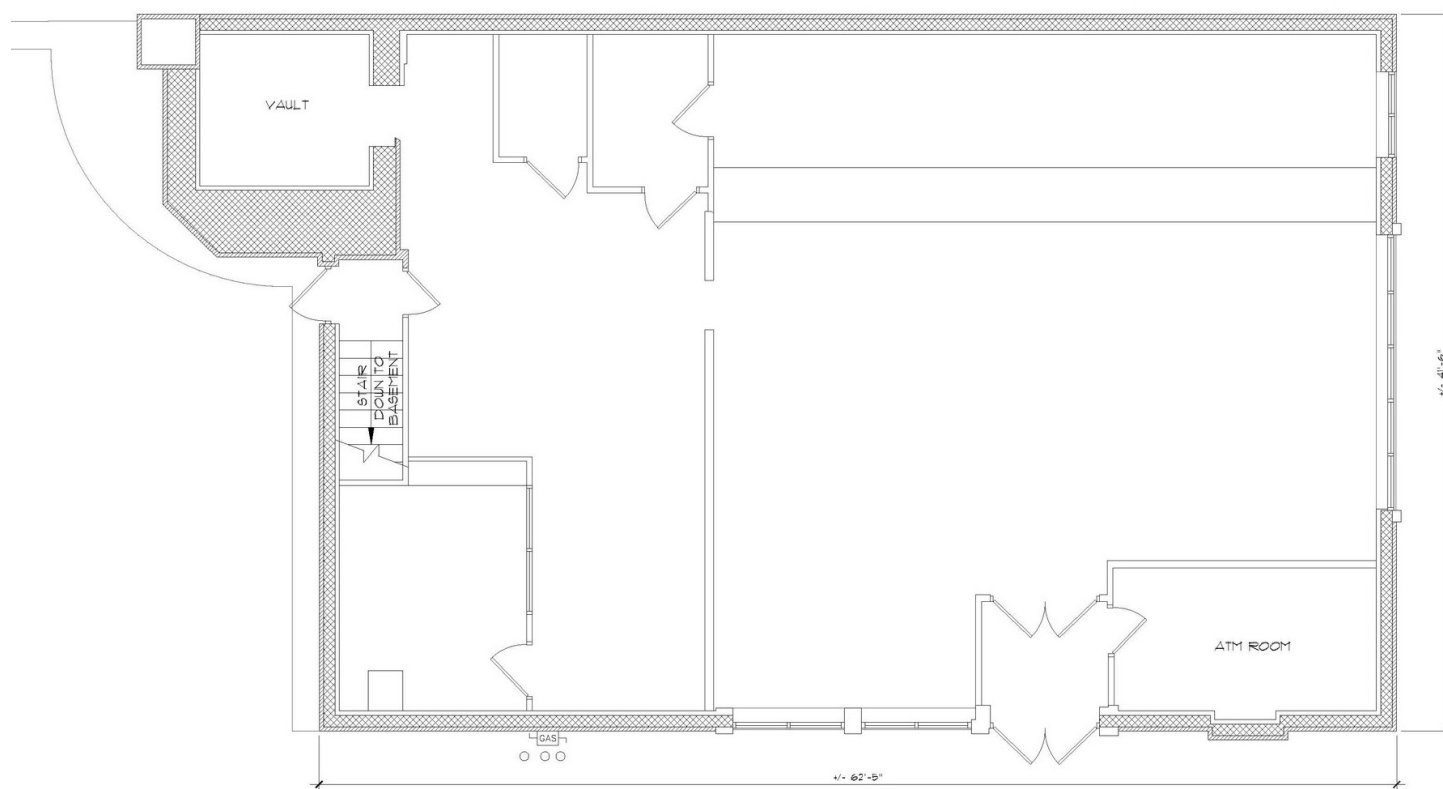
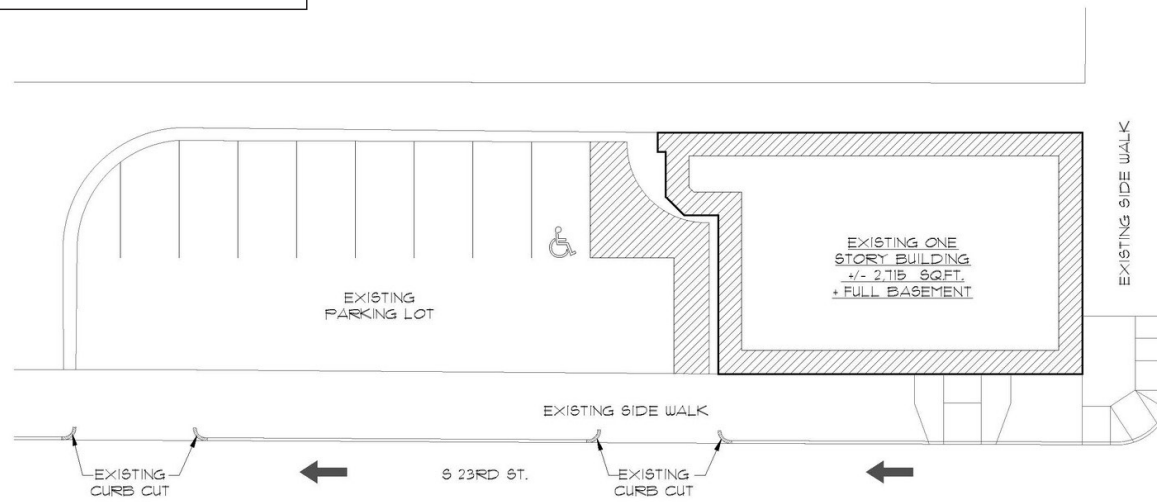
BASEMENT PHOTOS



INTERIOR PHOTOS



SITE AND FLOOR PLANS



S N Y D E R A V E N U E

AERIAL



MSC



JASON BROOKE

jbrooke@hellomsc.com

215.883.7408

DOUGLAS GREEN

dgreen@hellomsc.com

215.883.7400