

# GARNET VALLEY PLAZA

91 WILMINGTON WEST CHESTER PIKE | CHADDS FORD, PA

MSC

1,200-3,025 SF INLINE AVAILABLE FOR LEASE





# GARNET VALLEY PLAZA

## PROPERTY DETAILS

- ▶ Rare vacancy in a first-class community center located at the PA/DE border
- ▶ Great visibility and full access from both northbound and southbound lanes of Route 202
- ▶ Ideal opportunity for fitness, medical or convenience retail uses
- ▶ High VPD count with strong economic demographics in the area

## DEMOGRAPHICS

### EST. POPULATION

1 mi **5,826**

3 mi **41,854**

5 mi **116,702**

### EST. EMPLOYEES

1 mi **2,790**

3 mi **29,717**

5 mi **72,160**

### EST. AVERAGE HH INCOME

1 mi **\$125,729**

3 mi **\$143,188**

5 mi **\$137,805**

### EST. MEDIAN AGE

1 mi **42.6**

3 mi **47.0**

5 mi **45.2**

## JOIN THESE TENANTS



## JOIN THESE AREA TENANTS

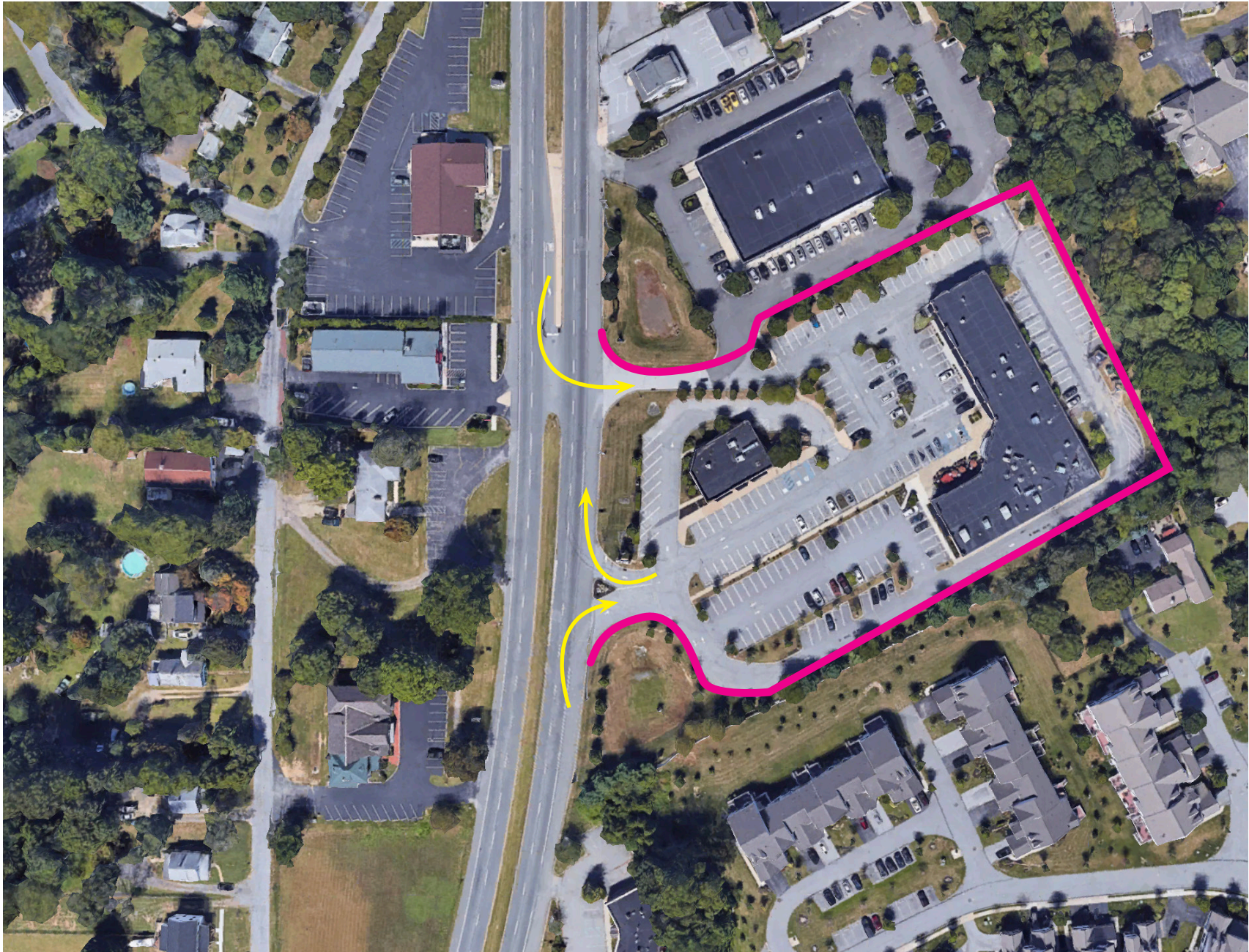


SITE PLAN



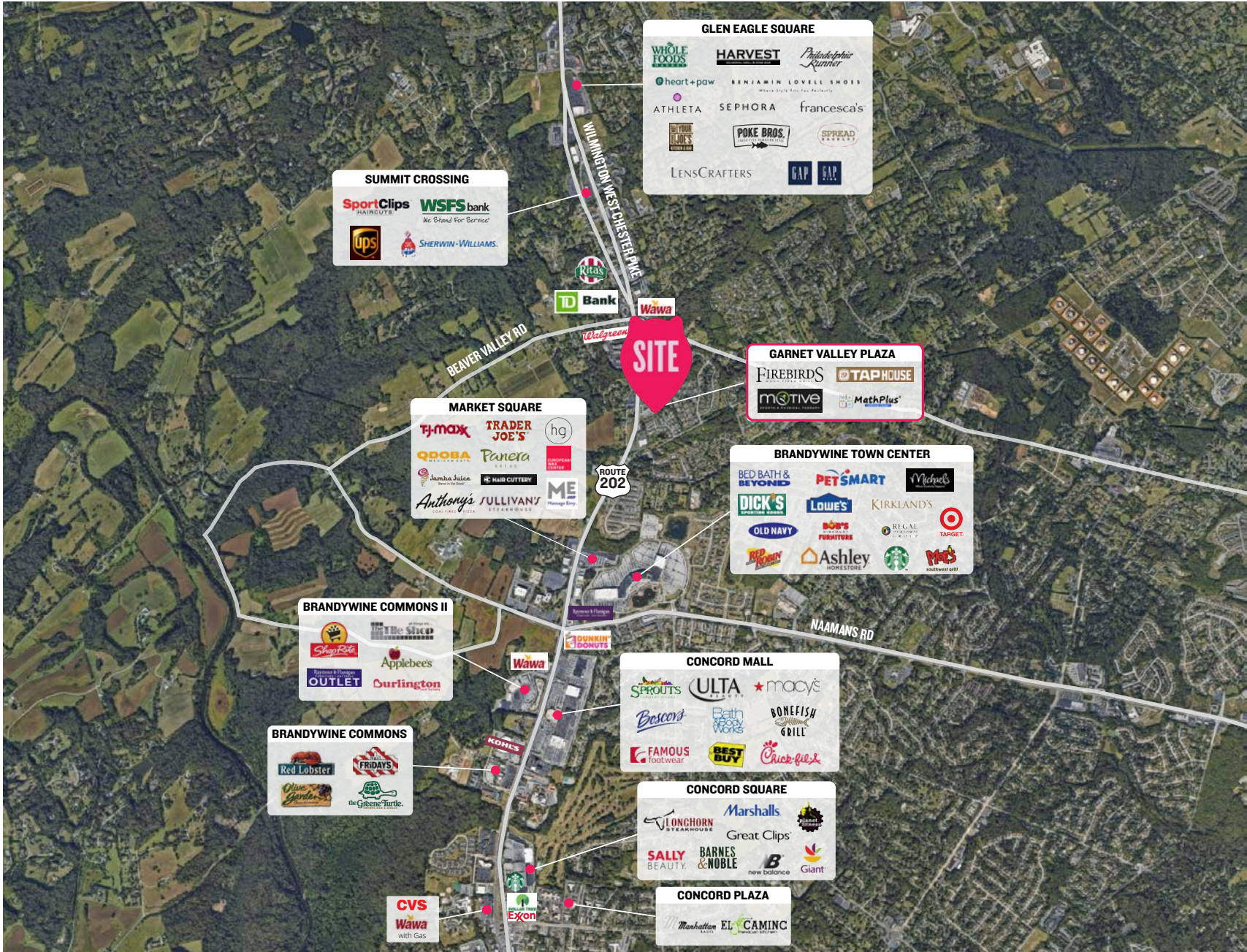
The information contained herein has been obtained from sources deemed reliable. MSC cannot verify it and makes no guarantee, warranty or representation about its accuracy. Any projections, opinions, assumptions or estimates provided by MSC are for discussion purposes only and do not represent the current or future performance of a property, location or market.

# INGRESS / EGRESS



The information contained herein has been obtained from sources deemed reliable. MSC cannot verify it and makes no guarantee, warranty or representation about its accuracy. Any projections, opinions, assumptions or estimates provided by MSC are for discussion purposes only and do not represent the current or future performance of a property, location or market.

# AERIAL



The information contained herein has been obtained from sources deemed reliable. MSC cannot verify it and makes no guarantee, warranty or representation about its accuracy. Any projections, opinions, assumptions or estimates provided by MSC are for discussion purposes only and do not represent the current or future performance of a property, location or market.



# MSC

*For more information:*

Michael Chucker

[mchucker@hellomsc.com](mailto:mchucker@hellomsc.com) | 215.883.7383

Joseph Raniszewski

[jraniszewski@hellomsc.com](mailto:jraniszewski@hellomsc.com) | 215.883.7390

