

MSC



ASANA
PARTNERS

1400 N. HOWARD STREET

JOIN NEWLY SIGNED COURT 16, MADABOLIC AND RED BULL

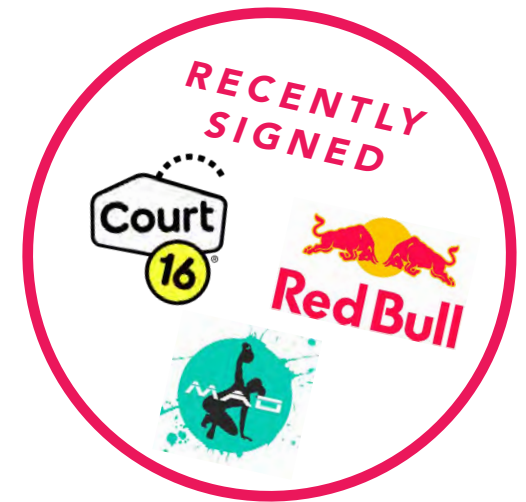
VIDEO TOUR HERE



±1,857 SF UP TO ±12,765 SF RETAIL / RESTAURANT SPACES AVAILABLE
FISHTOWN/OLDE KENSINGTON, PHILADELPHIA, PA

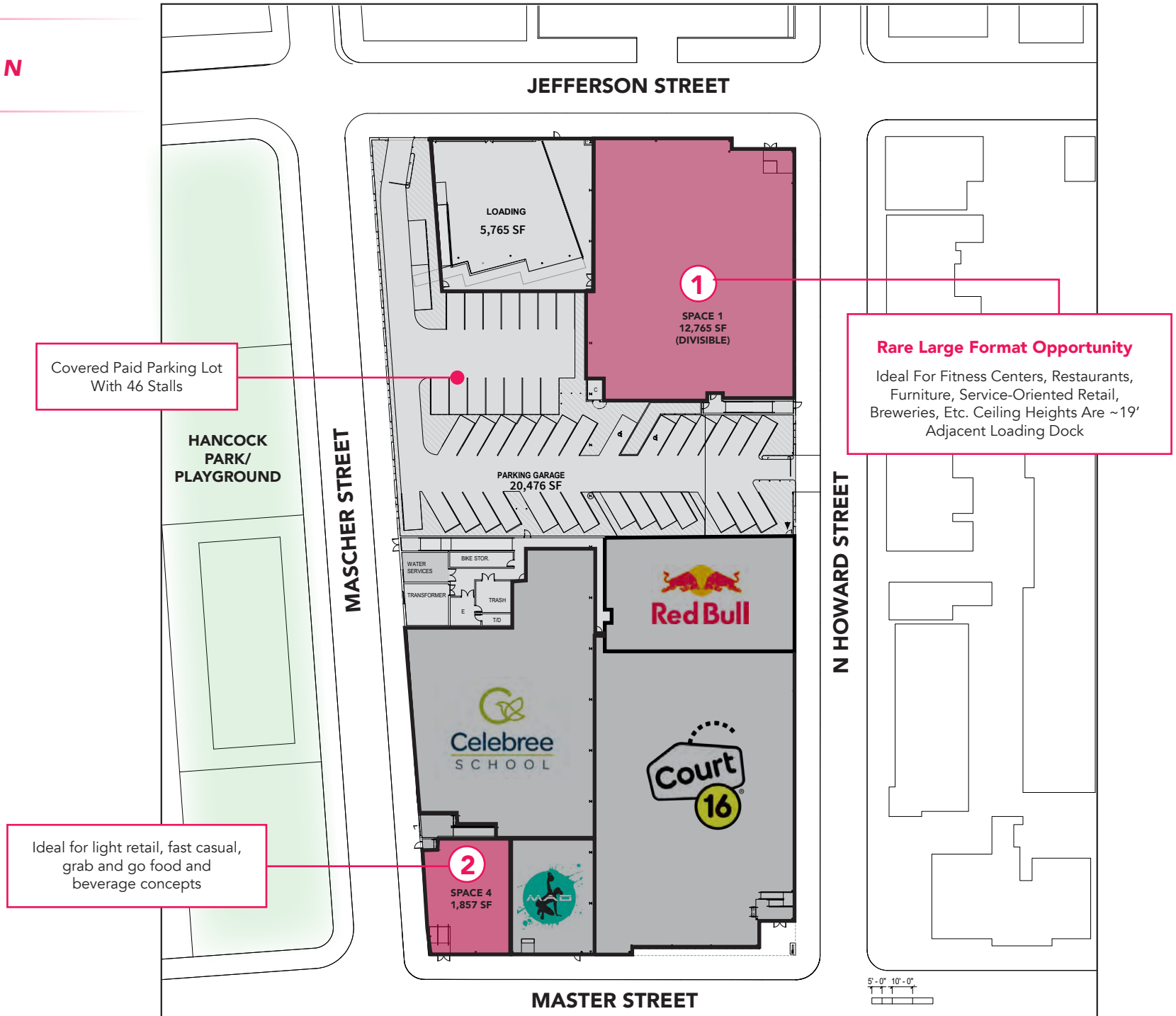
1400 N. HOWARD OVERVIEW

- Join these tenants: Court 16 Tennis, Celebree School, Red Bull, and Madabolic
- Only 2 spaces remain: 1,857 SF and 12,765 SF (adjacent to loading dock & divisible)
- 19.7' high ceilings with no column interruption
- A 78,000 SF redevelopment strategically located between Fishtown and Olde Kensington, two neighborhoods with burgeoning retail, incredible residential growth, and an unparalleled food and beverage scene





LEASING PLAN



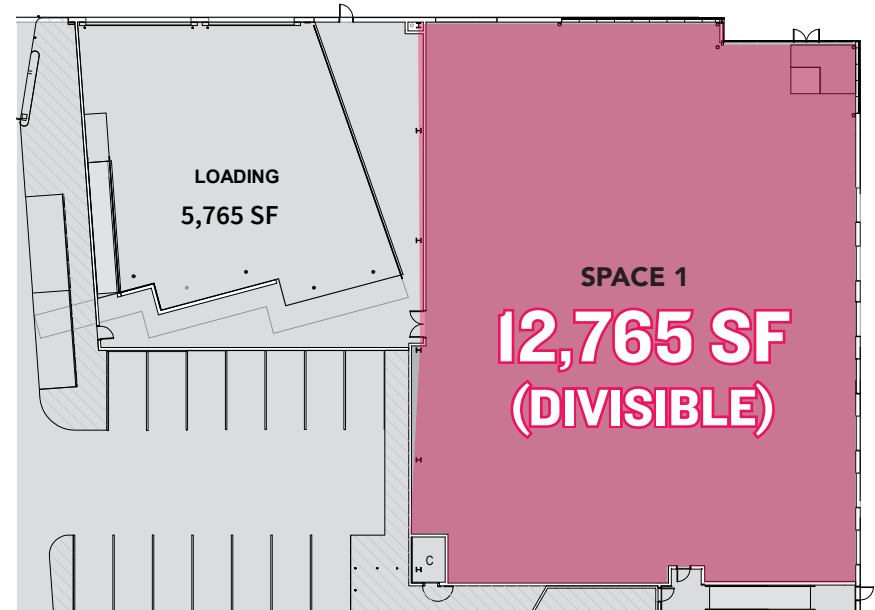
LEASING PLAN AERIAL



SPACE 1 - LEASING PLAN & RENDERINGS



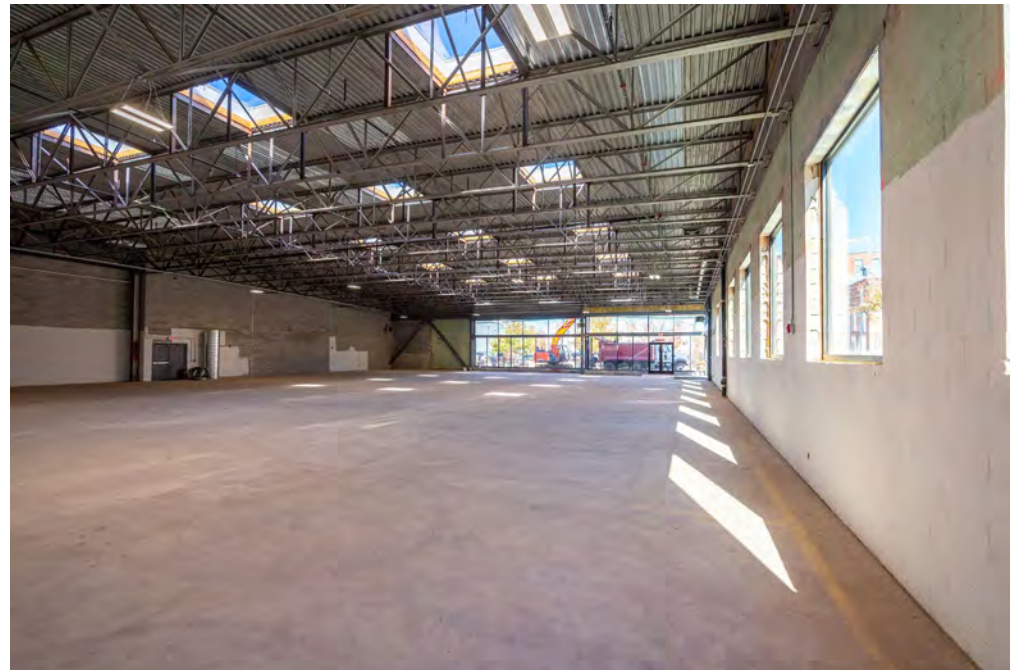
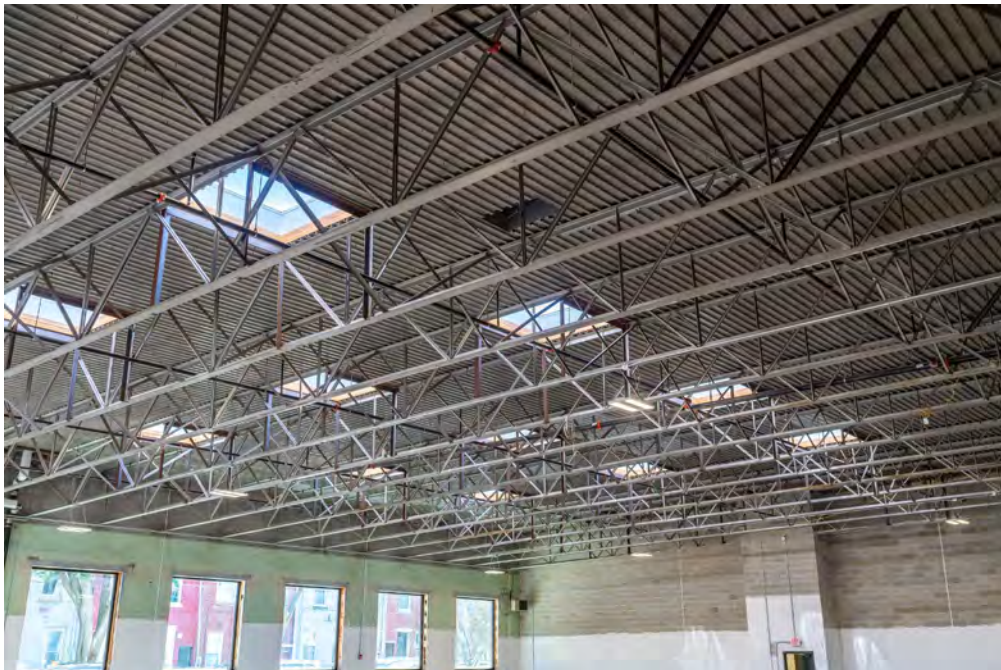
JEFFERSON STREET



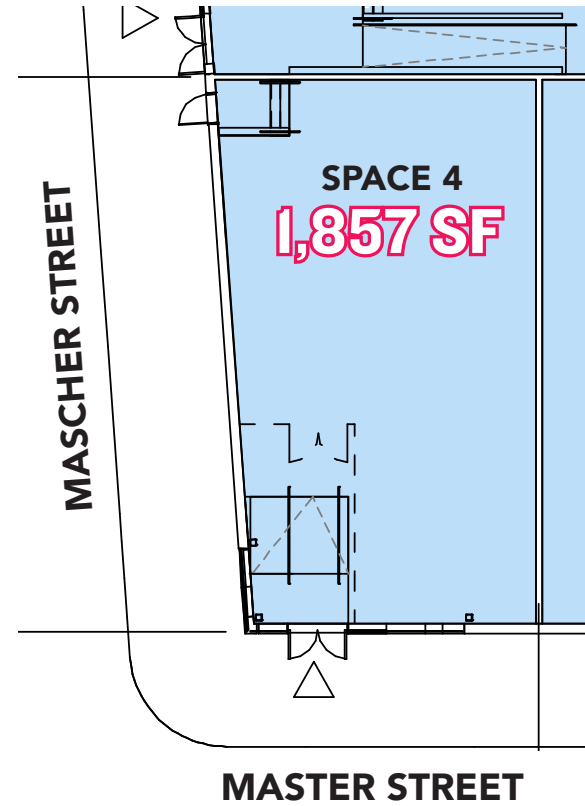
N HOWARD STREET



SPACE 1 - INTERIOR PHOTOS

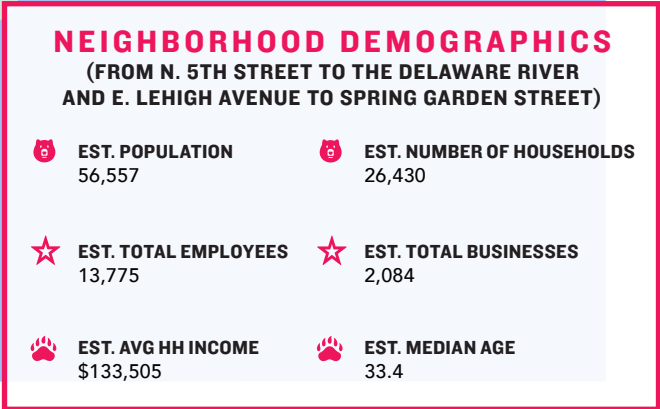


SPACE 4 - LEASING PLAN & RENDERINGS

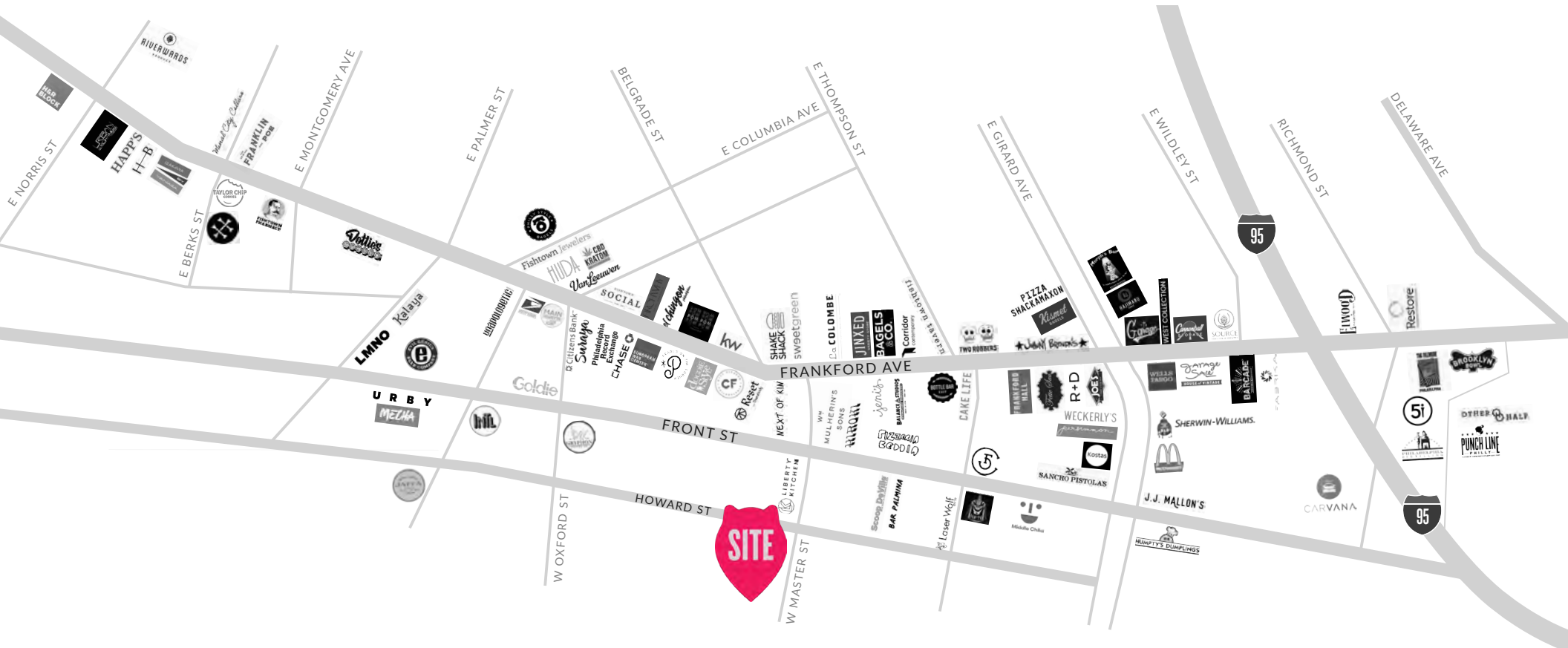


SPACE 4 - INTERIOR PHOTOS





ZOOMED AERIAL: FRANKFORD AVE





FISHTOWN OVERVIEW

Over the past decade, Philadelphia's Fishtown neighborhood has truly become the face of the city's nationally recognized renaissance and urban renewal. Prominently featured in publications from *The New York Times*, to *Forbes* and *Food and Wine*, among many others, Fishtown has transformed itself from a gritty community of manufacturing to a dynamic neighborhood where both makers and white collar professionals have established roots and call home. Known for its unparalleled dining scene and nightlife, Fishtown has recently developed a robust creative office market to become a unique live / work / play community with a soul. Philadelphia's "it" neighborhood has struck its delicate retail merchandising balance with a carefully curated mix of stabilizing national brands and innovative, entrepreneurial local businesses. Its unique proximity to adjacent burgeoning neighborhoods, Olde Kensington, East Kensington and Northern Liberties, coupled with its access to public transportation and connectivity to Center City, has created an explosive density of both redeveloped and new construction housing, causing pent up demand for many neighborhood goods and services.

TOP RESTAURANT DESTINATIONS



▶ LA COLOMBE

The de facto central gathering place for any business meeting, casual coffee or weekend brunch in Fishtown, this sprawling 12,000 SF converted warehouse is always humming. Start here for your neighborhood tour.



▼ BARCADE

Brooklyn transplant Barcade features vintage video games like Pac-Man & Donkey Kong plus a strong craft beer list.



▶ PIZZERIA BEDDIA

Dubbed "the best pizza in America" by *Bon Appetit Magazine*, Joe Beddia's pizza Mecca has now moved to a much larger back alley venue with full bar, outdoor garden and private "hoagie omakase" tasting room. Don't miss the antipasti, desserts and natural wine list too.



▶ FRANKFORD HALL

Philadelphia's version of an industrial German biergarten. Outdoor tables with firepits and ping pong are particularly fun during the early spring or fall months when a chill is in the air.

TOP RESTAURANT DESTINATIONS



► HIROKI

Deeply rooted in Japanese tradition and technique, Hiroki emphasizes harmony and attention to detail by offering a seasonal omakase menu inspired by Kyoto, Japan.



► SURAYA

One of Philadelphia's most unique dining destinations, this Lebanese concept from Defined Hospitality features a daily market and coffee bar, open kitchen with bar and restaurant, and a secret garden perfect for summer night drinking and relaxing.



▼ MIDDLECHILD CLUBHOUSE

Middle Child Clubhouse is the mature spin off of the incredibly successful Middle Child in Washington Square West. Even better—this place can hold more than double the amount of people than its predecessor.



► LASER WOLF

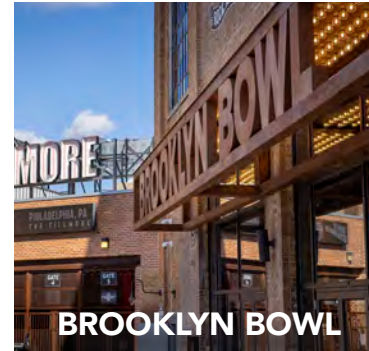
Laser Wolf has officially been recognized as one of the best restaurants in the world on Condé Nast Traveler's 2021 Hot List, just 1 year after GQ deemed it one of the best in America the same year it opened during the pandemic. Laser Wolf embraces the "shipudiya" style of dining and is a skewer house concept from the restaurant duo Michael Solomonov and Steven Cook.

TOP ENTERTAINMENT DESTINATIONS

In addition to world class restaurants, Fishtown is a burgeoning entertainment destination in Philadelphia. A choose-your-own-adventure type neighborhood where one can have an intimate candlelight dinner at Suraya and end their night at LMNO's Listening Room for an intimate concert (no phones allowed), or can see a burlesque show at Fabrika, hop over next door to Barcade, and finish their night with a CityWide at Fishtown Tavern to mosey on over to Rivers Casino. This place has it all.



THE FILLMORE



BROOKLYN BOWL



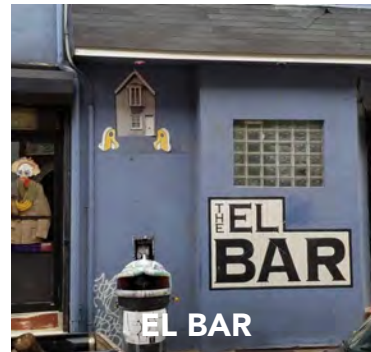
RIVERS CASINO



FABRIKA



THE FOUNDRY



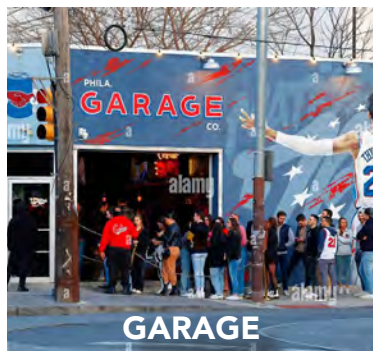
EL BAR



PUNCHLINE



JOHNNY BRENDA'S



GARAGE



STATESIDE



LMNO

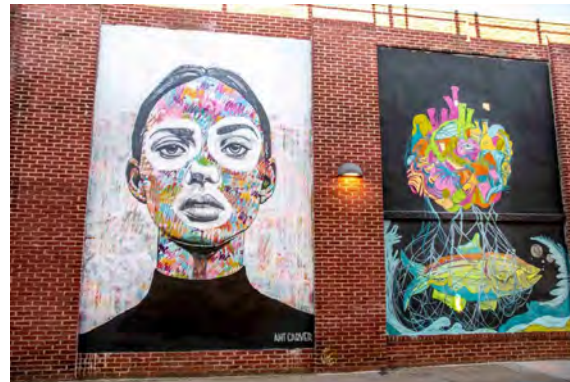


PHILA. BREWING CO



EVIL GENIUS

FISHTOWN MURALS & STREET ART





ASANA
PARTNERS

MSC



1400 N HOWARD STREET
FISHTOWN | PHILADELPHIA, PA

JACOB COOPER

jcooper@hellomsc.com
215.883.7402

BRITTANY GOLDBERG

bgoldberg@hellomsc.com
215.883.7405

JULIA MCMANUS

jmcmanus@hellomsc.com
267.622.3098