

MSC



DEVELOPED BY:

the
FISHTOWN
collective

FISHTOWN | PHILADELPHIA, PA

1359 FRANKFORD AVE

NEW CONSTRUCTION RETAIL/RESTAURANT OPPORTUNITY
IN THE HEART OF FISHTOWN



1359 FRANKFORD AVE

BRITTANY GOLDBERG
bgoldberg@hellomsc.com
215.883.7405

DOUGLAS GREEN
dgreen@hellomsc.com
215.883.7400



- New construction retail/restaurant space on the ground floor of a 4-story mixed-use building (61 luxury residential units)
- One space remaining - 1,904 SF
- 26' 4" of frontage on the most iconic block in Fishtown with approx. 12' ceiling heights
- Positioned at the 50-yard line of Frankford Ave, in one of Philadelphia's most vibrant neighborhoods, adjacent to La Colombe's HQ
- Q2 2024 delivery

DEMOGRAPHICS



EST. POPULATION

1 mi 50,442 | 3 mi 441,906 | 5 mi 979,281



EST. EMPLOYEES

1 mi 19,450 | 3 mi 388,281 | 5 mi 561,719



EST. AVG HH INCOME

1 mi \$94,908 | 3 mi \$81,683 | 5 mi \$72,422



EST. MEDIAN AGE

1 mi 34.1 | 3 mi 33.9 | 5 mi 34.1

JOIN THESE AREA TENANTS

HIROKI

WM
MULHERIN'S
SONS

FRANKFORD HALL

doggie style pets



La COLOMBE
COFFEE ROASTERS

Laser Wolf
SMITH

PIZZERIA BEDDIA

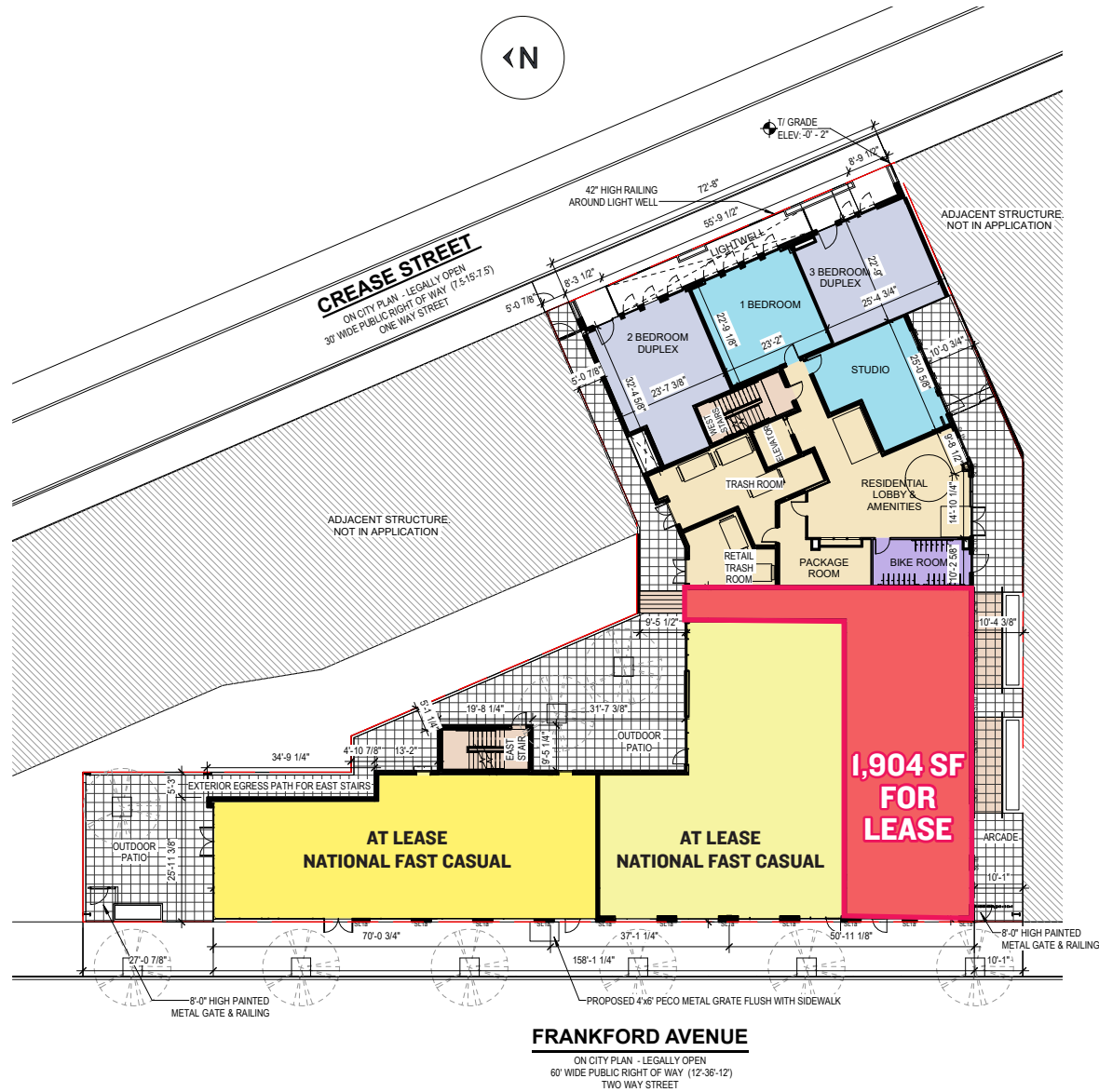
Suraya



1359 FRANKFORD AVE

BRITTANY GOLDBERG
bgoldberg@hellomsc.com
215.883.7405

DOUGLAS GREEN
dgreen@hellomsc.com
215.883.7400





1359 FRANKFORD AVE

BRITTANY GOLDBERG
bgoldberg@hellomsc.com
215.883.7405

DOUGLAS GREEN
dgreen@hellomsc.com
215.883.7400



FISHTOWN,
PHILADELPHIA, PA

RENDERINGS



1359 FRANKFORD AVE

BRITTANY GOLDBERG
bgoldberg@hellomsc.com
215.883.7405

DOUGLAS GREEN
dgreen@hellomsc.com
215.883.7400



The information contained herein has been obtained from sources deemed reliable. MSC cannot verify it and makes no guarantee, warranty or representation about its accuracy. Any projections, opinions, assumptions or estimates provided by MSC are for discussion purposes only and do not represent the current or future performance of a property, location or market.

MSC



1359 FRANKFORD AVE

BRITTANY GOLDBERG
bgoldberg@hellomsc.com
215.883.7405

DOUGLAS GREEN
dgreen@hellomsc.com
215.883.7400





FISHTOWN NEIGHBORHOOD

BRITTANY GOLDBERG
bgoldberg@hellomsc.com
215.883.7405

DOUGLAS GREEN
dgreen@hellomsc.com
215.883.7400



Over the past decade, Philadelphia's Fishtown neighborhood has truly become the face of the city's nationally recognized renaissance and urban renewal. Prominently featured in publications from *The New York Times*, to *Forbes* and *Food and Wine*, among many others, Fishtown has transformed itself from a gritty community of manufacturing to a dynamic neighborhood where both "makers" and white collar professionals have established roots and call home. Known for its unparalleled dining scene and nightlife, Fishtown has recently developed a robust creative office market to become a unique live / work / play community with a soul. Philadelphia's "it" neighborhood has struck its delicate retail merchandising balance with a carefully curated mix of stabilizing national brands and innovative, entrepreneurial local businesses. Its unique proximity to adjacent burgeoning neighborhoods, Olde Kensington, East Kensington and Northern Liberties, coupled with its access to public transportation and connectivity to Center City, has created an explosive density of both redeveloped and new construction housing, causing pent up demand for many neighborhood goods and services.



FISHTOWN NEIGHBORHOOD

BRITTANY GOLDBERG
bgoldberg@hellomsc.com
215.883.7405

DOUGLAS GREEN
dgreen@hellomsc.com
215.883.7400

NEIGHBORHOOD DEMOGRAPHICS

(FROM N. 5TH STREET TO THE DELAWARE RIVER
AND E. LEHIGH AVENUE TO SPRING GARDEN STREET)

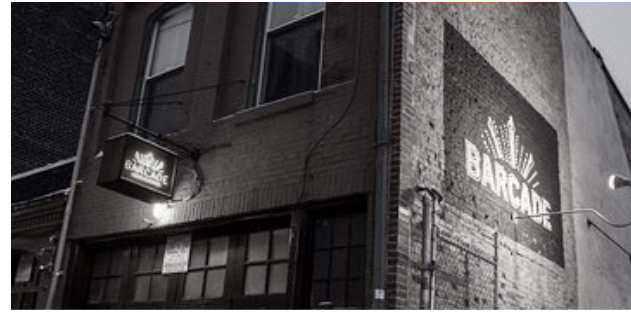
- EST. POPULATION 44,202
- EST. NUMBER OF HOUSEHOLDS 19,479
- EST. TOTAL EMPLOYEES 10,914
- EST. TOTAL BUSINESSES 1,530
- EST. AVG HH INCOME \$81,736
- EST. MEDIAN AGE 34.4

NEARBY TENANTS

Suraya



LMNO





FISHTOWN NEIGHBORHOOD

BRITTANY GOLDBERG
bgoldberg@hellomsc.com
215.883.7405

DOUGLAS GREEN
dgreen@hellomsc.com
215.883.7400



▶ LA COLOMBE

The de facto central gathering place for any business meeting, casual coffee or weekend brunch in Fishtown, this sprawling 12,000 SF converted warehouse is always humming. Start here for your neighborhood tour.



▼ BARCADE

Brooklyn transplant Barcade features vintage video games like Pac Man & Donkey Kong plus a strong craft beer list.



▶ PIZZERIA BEDDIA

Dubbed “the best pizza in America” by *Bon Appetit Magazine*, Joe Beddia’s pizza Mecca has now moved to a much larger back alley venue with full bar, outdoor garden and private “hoagie omakase” tasting room. Don’t miss the antipasti, desserts and natural wine list too.



▶ FRANKFORD HALL

Philadelphia’s version of an industrial German Biergarten. Outdoor tables with firepits and ping pong are particularly fun during the early spring or fall months when a chill is in the air.



FISHTOWN NEIGHBORHOOD

BRITTANY GOLDBERG
bgoldberg@hellomsc.com
215.883.7405

DOUGLAS GREEN
dgreen@hellomsc.com
215.883.7400



▶ THE FILLMORE

One of Philadelphia's best live music venues set in a renovated 125 year-old converted metal factory.



▼ SURAYA

One of Philadelphia's most unique dining destinations, this Lebanese concept from Defined Hospitality features a daily market and coffee bar, open kitchen with bar and restaurant, and a secret garden perfect for summer night drinking and relaxing.

HIROKI

Deeply rooted in Japanese tradition and technique, Hiroki emphasizes harmony and attention to detail by offering a seasonal omakase menu inspired by Kyoto, Japan.

