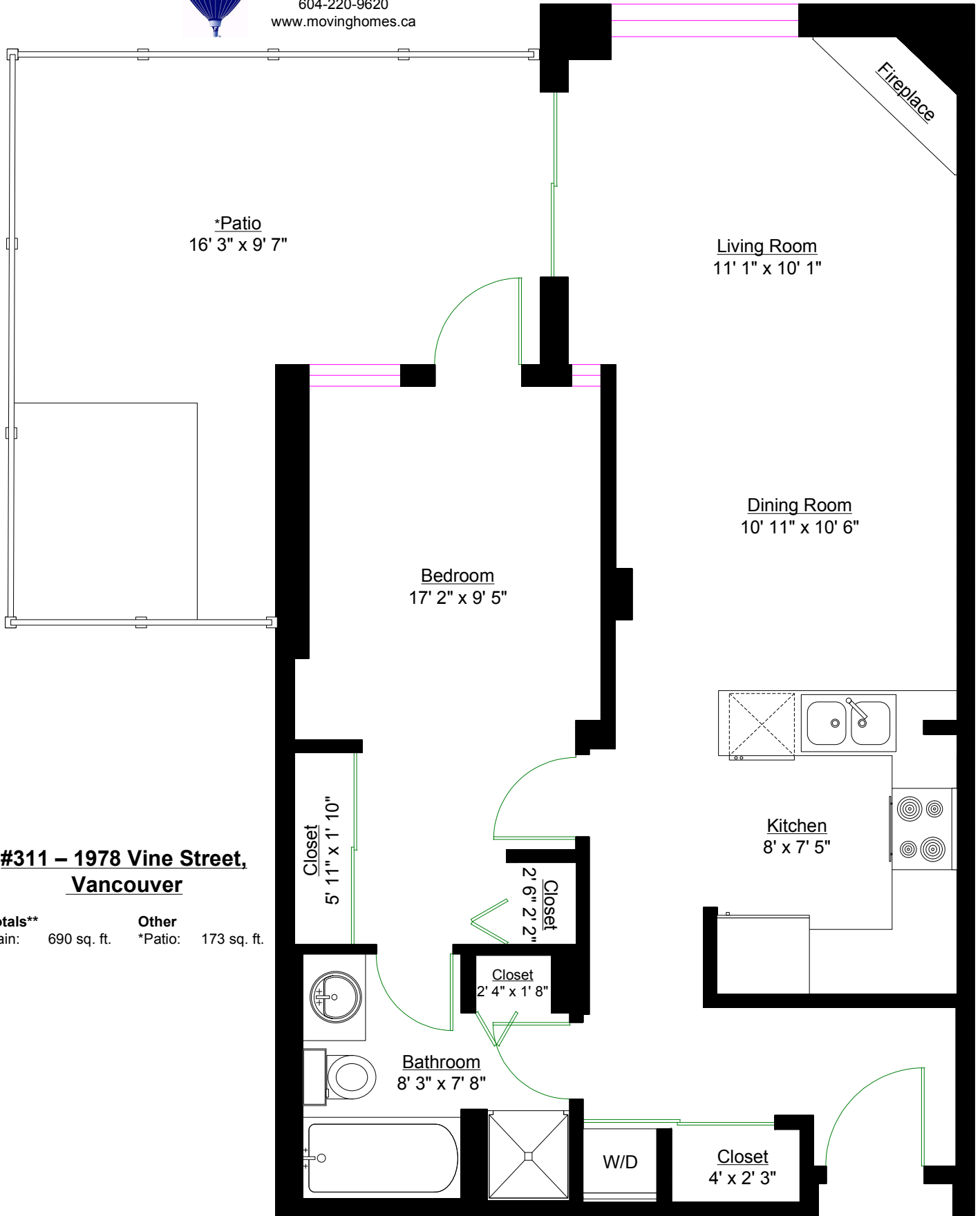




RE/MAX Select Properties
 Lorna Slimman B.A.
 604-220-9620
 www.movinghomes.ca



**#311 – 1978 Vine Street,
 Vancouver**

Totals**
 Main: 690 sq. ft. **Other**
 *Patio: 173 sq. ft.



** Approx. based on interior measurements to exterior walls
 ** Total square footage not taken from strata documents
 * Estimated total