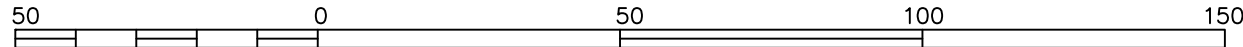


Sketch Plan of Proposed Subdivision of Lots 3 and 4, Sec 11, Tp 20, R 10, W6M, KDYD, Plan 35353

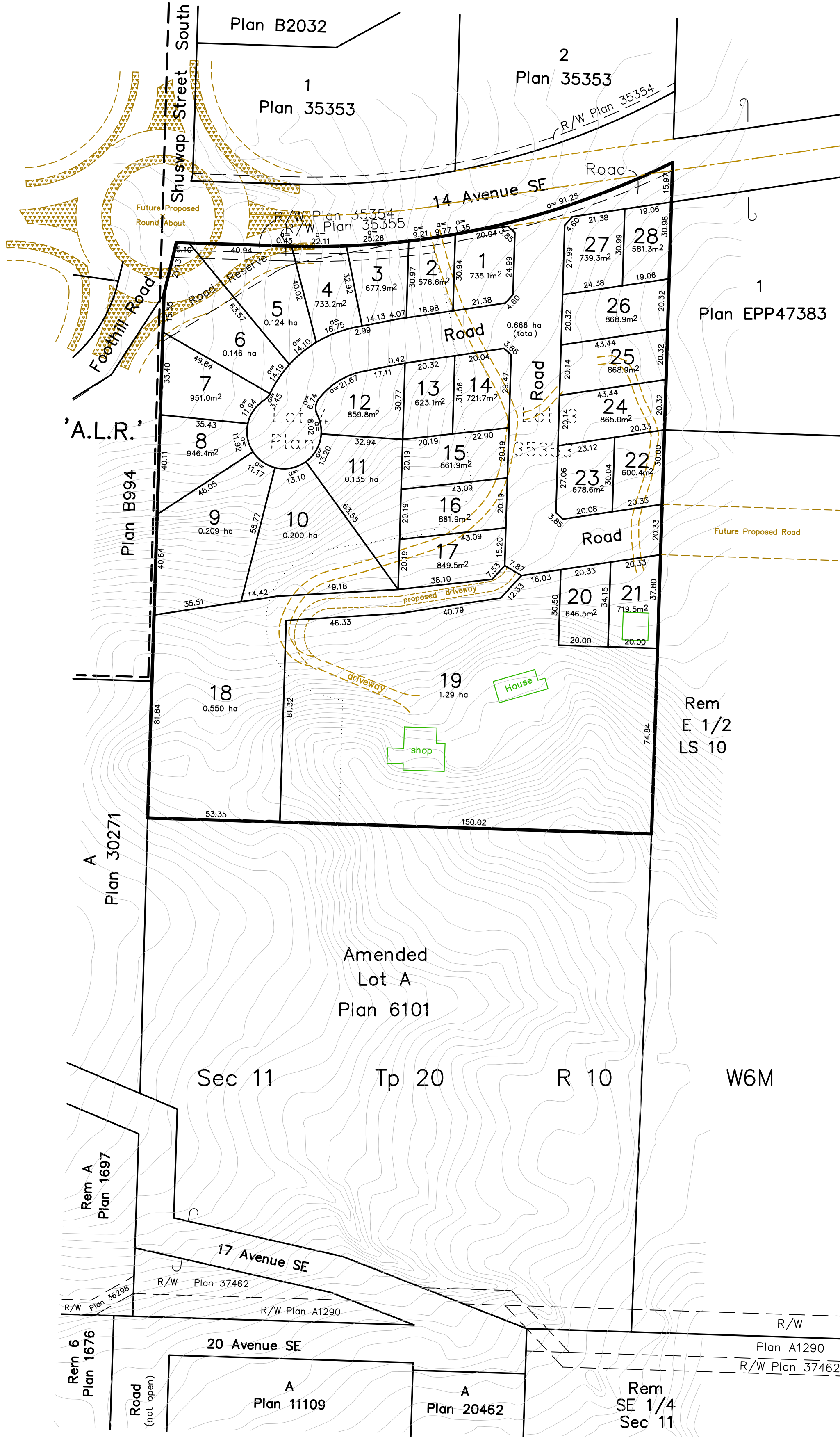
Scale 1:1250

BCGS 82L.064



All distances are in metres.

The intended plot size of this plan is 432mm in width by 560mm in height (C size) when plotted at a scale of 1:1250



April 26, 2017

BROWNE JOHNSON LAND SURVEYORS
 B.C. AND CANADA LANDS
 SALMON ARM, B.C. Ph.832-9701
 File: 630-16 (405-07)