



PHIL LeGree

DONNA LEYLAND

# 611 Bournemouth Crescent, North Vancouver, BC

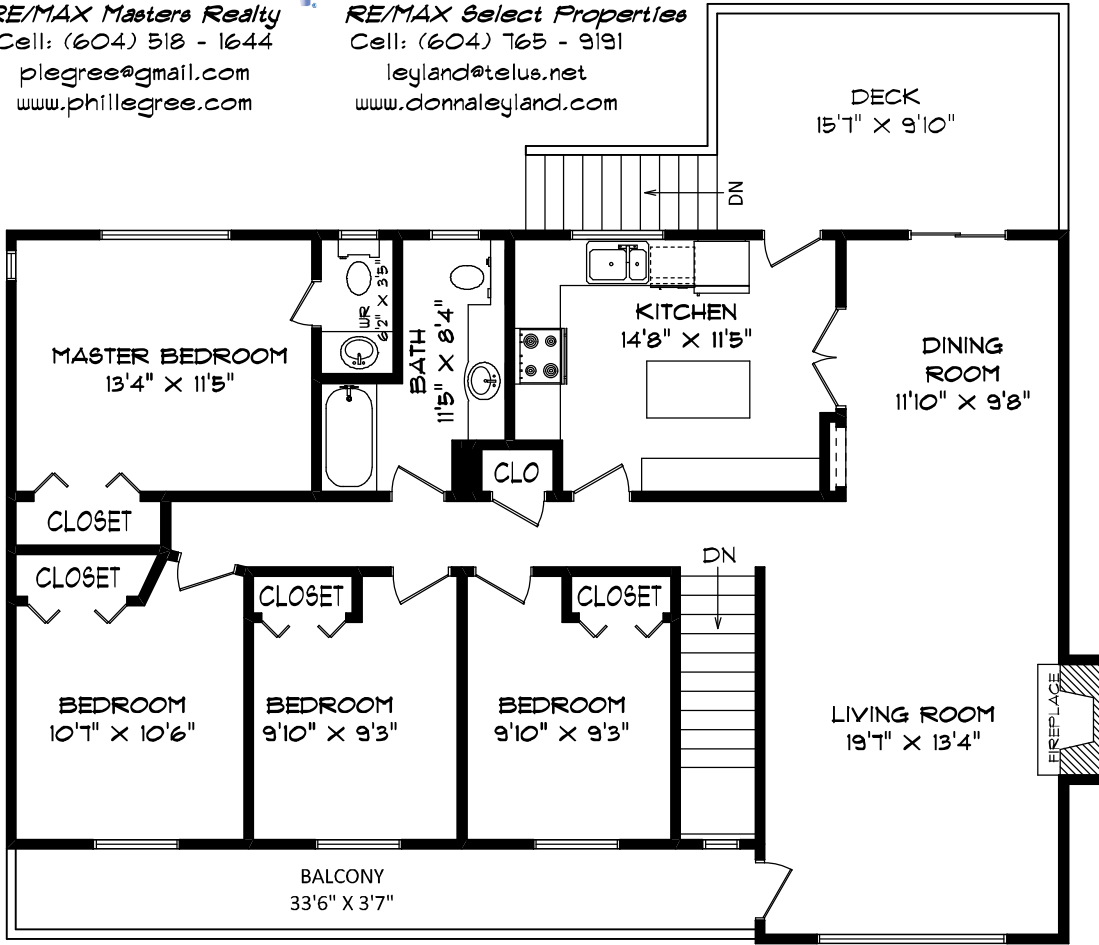
RE/MAX Masters Realty  
Cell: (604) 518 - 1644  
plegree@gmail.com  
www.phillegree.com

RE/MAX Select Properties  
Cell: (604) 765 - 9191  
leyland@telus.net  
www.donnaileyland.com

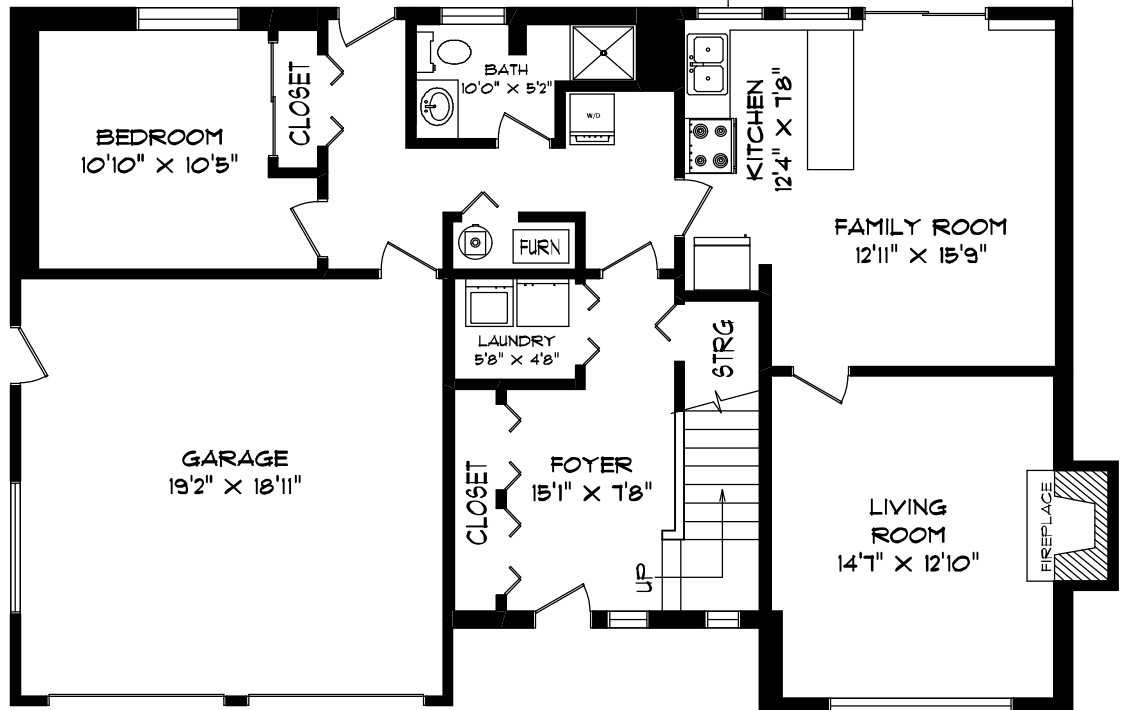
TOTAL USABLE AREA: 2503 SQ. FT.

NOT INCLUDED AREAS

GARAGE:	380 SQ. FT.
PATIO:	120 SQ. FT.
BALCONY:	139 SQ. FT.
DECK:	166 SQ. FT.



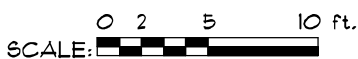
MAIN FLOOR: 1401 SQ. FT.



LOWER FLOOR: 1096 SQ. FT.

FEBRUARY 29, 2012

FLOOR PLAN BY:  
**SEEVIRTUAL**  
TEL: (604) 575-1244  
www.seevirtual360.com



MEASUREMENTS ARE FOR PROMOTIONAL USE ONLY AND IS NOT INTENDED FOR CONSTRUCTION USE. ROOM SIZES SHOULD BE CONSIDERED APPROXIMATE. MEASUREMENTS & CALCULATIONS ARE EAO INSURED.