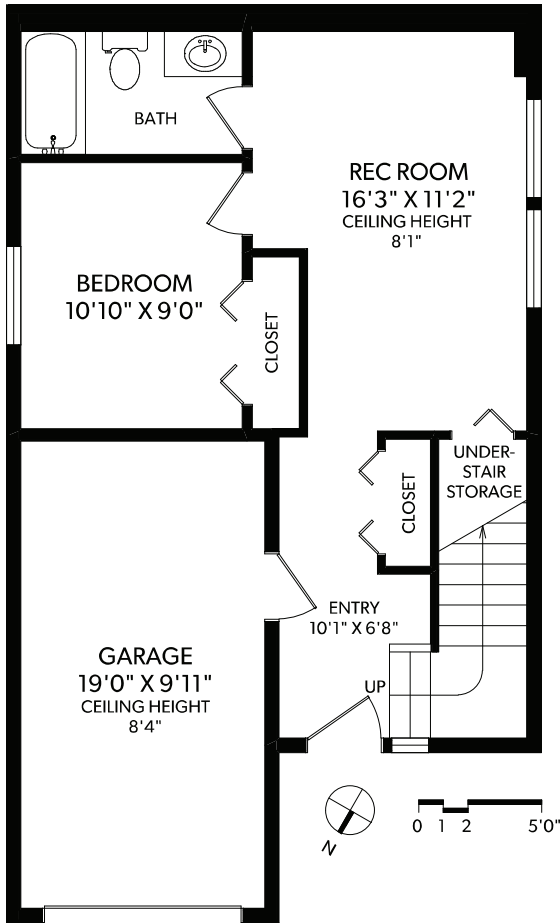
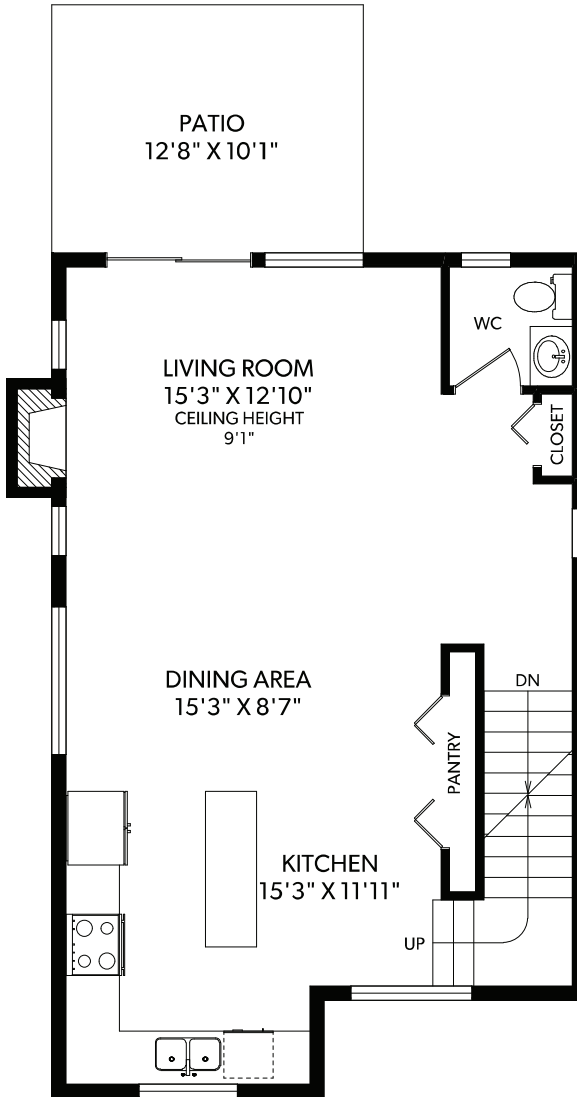


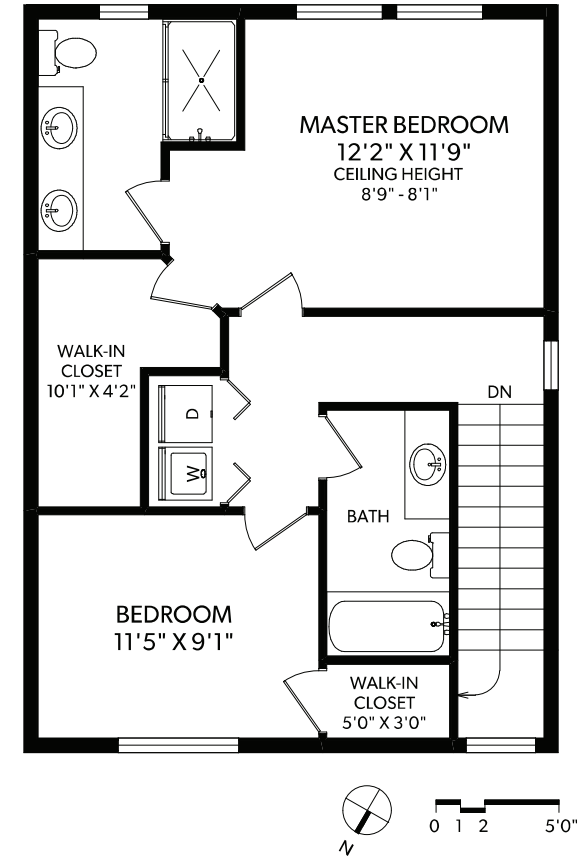
LOWER FLOOR



MAIN FLOOR



UPPER FLOOR



FLOOR	FINISHED	UNFINISHED	TOTAL	OTHER AREAS
MAIN	700	0	700	GARAGE 218
UPPER	650	0	650	PATIO 128
LOWER	508	0	508	
TOTAL	1858	0	1858	



3492 MYLES MANSSELL ROAD

DOCUMENT PREPARED FOR THE EXCLUSIVE USE OF
THE PREFERRED HOMES TEAM



THE PREFERRED HOMES TEAM
www.PreferredHomes.ca **RE/MAX**CAMOSUN

250-388-6998
ORDERS@REALFOTO.CA MEASURED 10/31/2019 BY CLAY OVINGE

All information furnished regarding this property is from sources deemed reliable but no warranty or representation is made to the accuracy thereof. Purchaser to verify measurements if important.