



Mortgage Information

Price: \$388,000	5%	10%	20%
Min. Down Payment Required	\$19,400.00	\$38,800.00	\$77,600.00
First Mortgage	\$368,600.00	\$349,200.00	\$310,400.00
Insurance Premium	\$10,873.70	\$7,682.40	n/a
Total Mortgage	\$379,473.70	\$356,882.40	\$310,400.00
Monthly Mortgage Payment	\$1,698.66	\$1,597.54	\$1,389.46
Total Monthly Payments**	\$1,932.68	\$1,831.56	\$1,623.49
Combined Income Required***	\$75,288.17	\$71,495.92	\$63,693.21

Home Stats

Price:	\$388,000
Bedrooms:	1
Bathrooms:	1
Square Ft.:	587
Age:	12
Gross Tax:	\$1,239.11
Strata Fee:	\$248.14

Based on a Conventional Rate of 3.0 & 30 Year Amortization / * Rates subject to change without notice
 ** Includes: estimated yearly property taxes, Principle & Interest / *** Subject to approval

All Your Mortgage Needs Contact:

MARC LALONDE
 Dominion Lending
 T (604) 837-1967
 marc@ourmortgageprofessional.com
 www.marclalonde.ca



Royal LePage West Real Estate Services
 2185 Austin Ave, Coquitlam, BC V3K 2Y5
 T 604 939 6666 F 604 909 2666

WWW.HAFEZREALTY.COM
 WWW.LIVEATSIMONFRASER.COM
 WWW.LIVINGCOQUITLAM.COM





HAFEZ PANJU
PERSONAL REAL ESTATE CORPORATION
TRUST THE VALUE

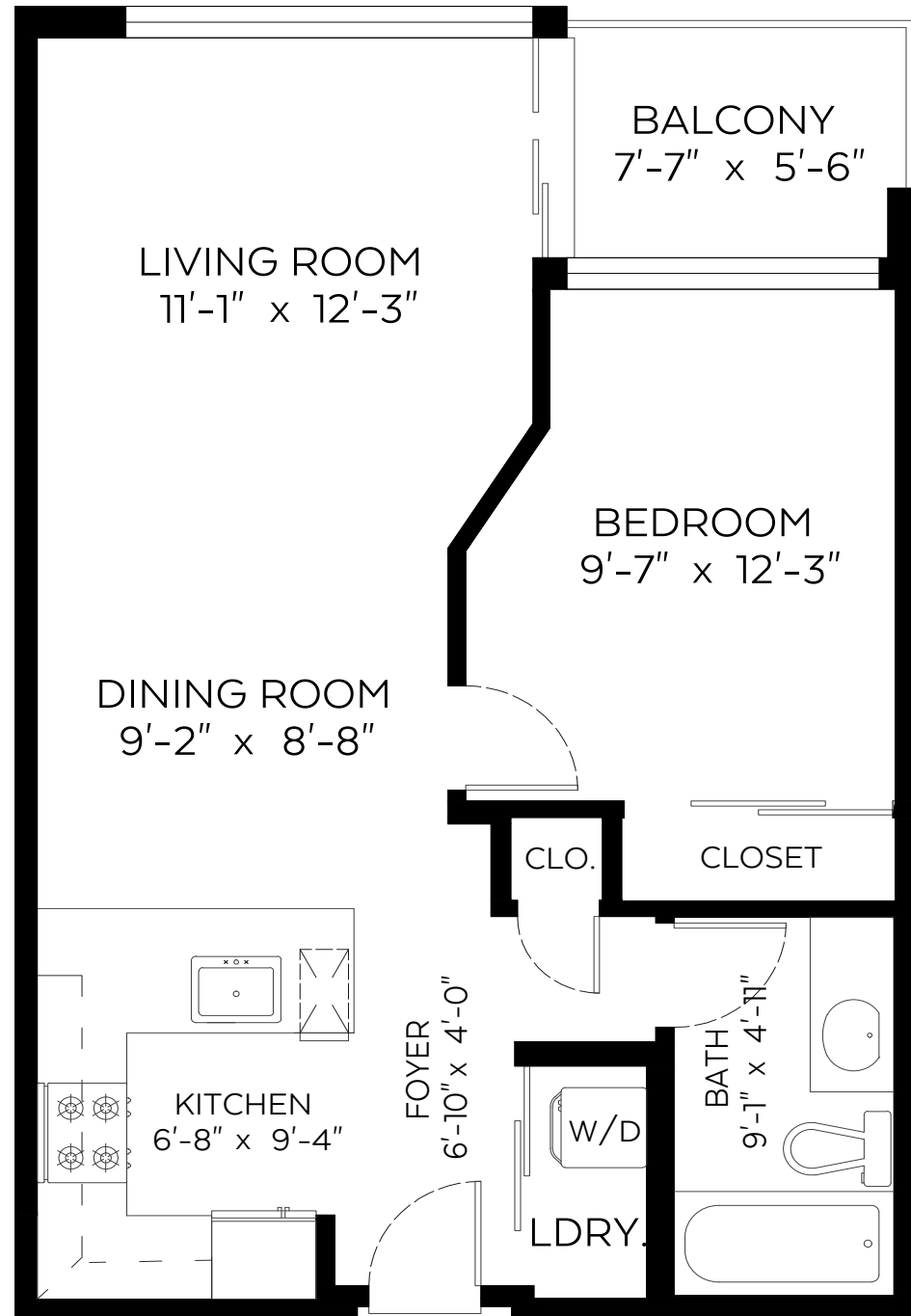
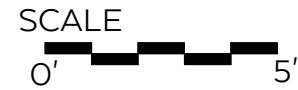
604.377.3689 | hafez@hafezrealty.com | www.hafezrealty.com

#512-9009 Cornerstone Mews,
Burnaby, B.C.

Main Floor: 587 sq.ft.
Ceiling Height: 8'-7"

Auxiliary Area

Balcony: 41 sq.ft.



1% of Net Real Estate Proceeds Donated to *The Kidney Foundation*



604 377 3689
hafez@hafezrealty.com



HAFEZ PANJU
PERSONAL REAL ESTATE CORPORATION
LIVEATSIMONFRASER.COM

Located In The Heart of SFU **\$388,000**
512 9009 Cornerstone Mews.
Burnaby, Simon Fraser University

Property Highlights



Spacious 1 Bedroom
Covered Balcony
Tons of Natural Light
1 Bed, 1 Bath, 587sqft
Rental & Pet Friendly
Parking & Locker

Looking for that perfect 1 bed condo & can't seem to find it? Well your search ends here! Located in the "The Heart" of SFU, UniverCity, in The Hub, a concrete, LEED building. This 1bed/1bath/587sqft home is perfect for investors, first time buyers, aspiring students & everyone else in between. Features: an open concept plan, plenty of natural light, wood floors, a kitchen with SS apps, quartz counters & plenty of cupboards. The well sized master offers excellent closet space & large windows looking out to the covered balcony. Close to: transit, shopping, indoor/outdoor rec & a host of perks available only to UniverCity residents. Do not miss your chance to enjoy living in this great lifestyle neighborhood! Bonus: 1 parking, locker & rental & pet friendly. Act Now.



Measured on: October 09, 2020

The floor plan is not suitable for architectural/construction and is covered under E&O. © Excelsior Measuring Inc. 2019. All rights reserved for Excelsior Measuring Inc. Users shall not publish and distribute such material (in whole or in part) and/or incorporate it in other works in any form.



Royal LePage West Real Estate Services
2185 Austin Ave, Coquitlam, BC V3K3R9
T 604 939 6666 F 604 909 2666

WWW.HAFEZREALTY.COM
WWW.LIVEATSIMONFRASER.COM
WWW.LIVINGCOQUITLAM.COM