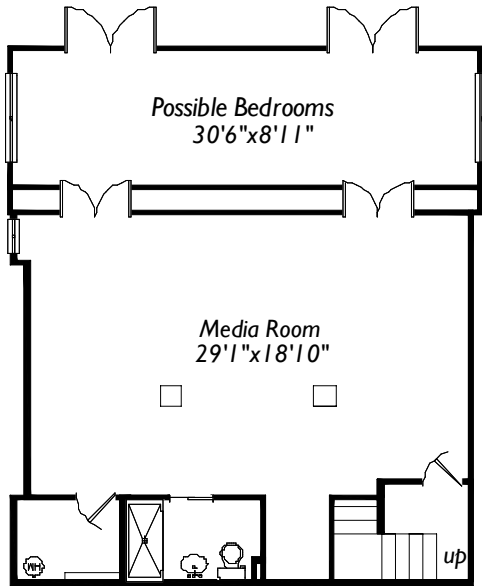
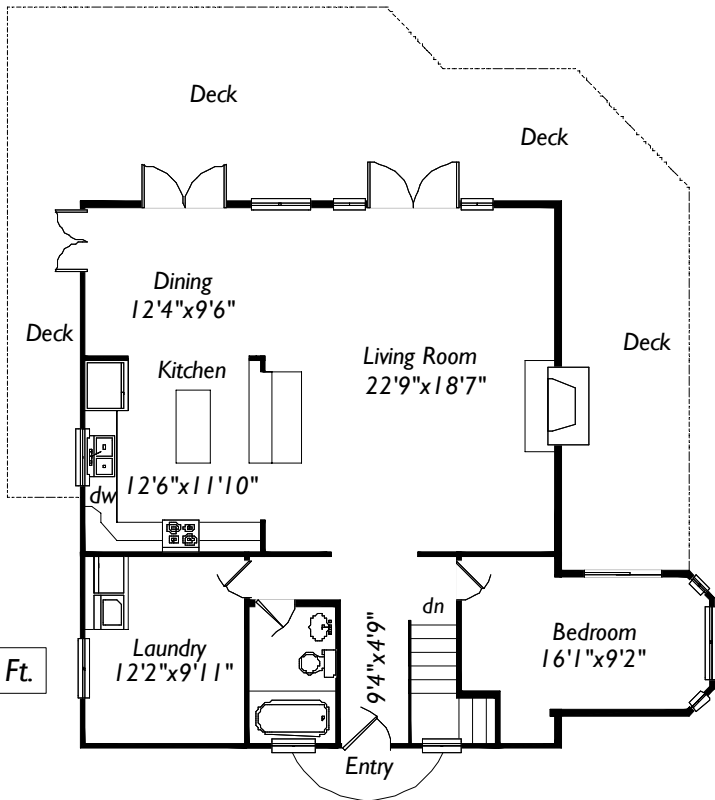
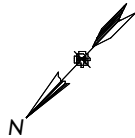


4955 Prospect Lake Road Victoria, BC V9E 1J5



Lower 1122 Sq. Ft.



Main 1283 Sq. Ft.

	Finished Sq. ft	Unfinished Sq. ft	Total Sq. ft
Lower	1122	0	1122
Main	1283	0	1283
Total	2405	0	2405
Decks	0	780	780

Prepared for the exclusive use of
Richard Gadoury of Pemberton Holmes
File # 2609 Measured June 05, 2013
by True Measurement 250-744-0911
Victoria, BC