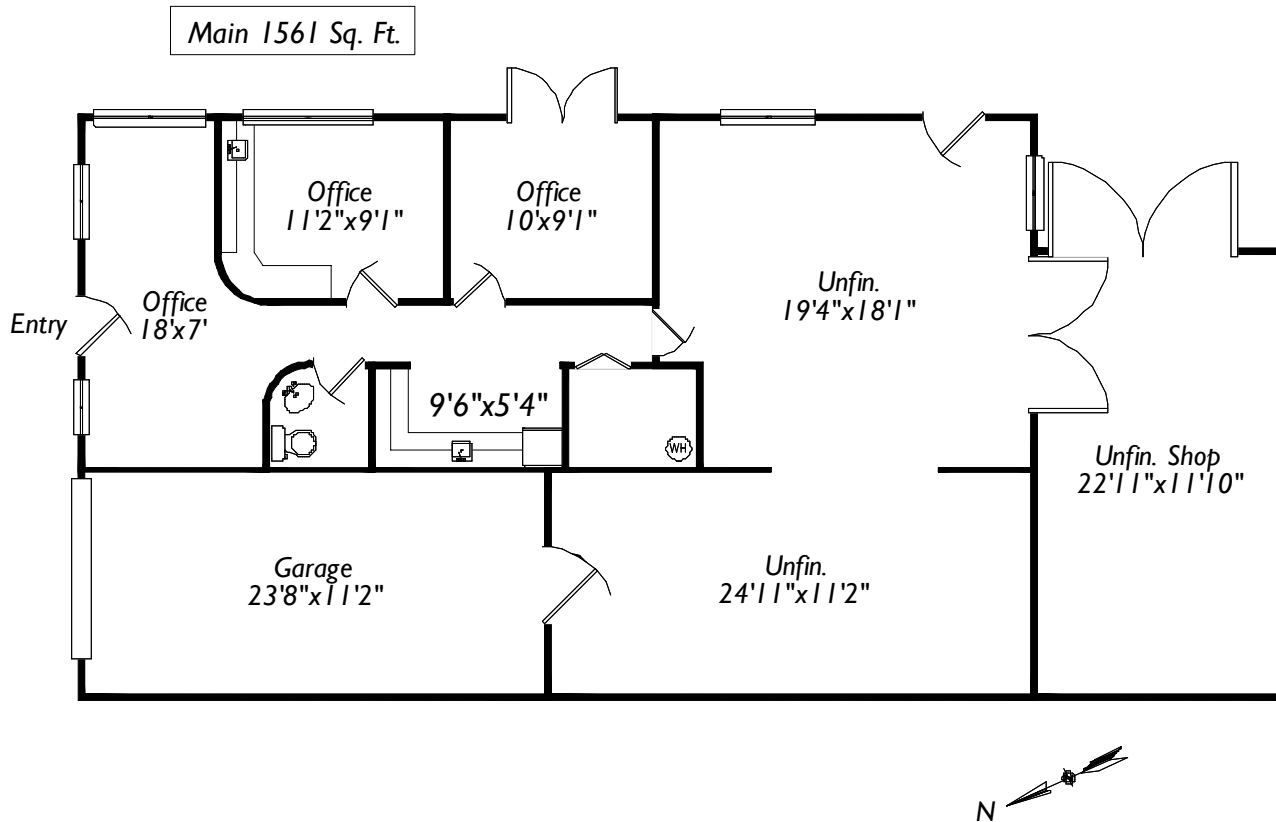


4955 Prospect Lake Road Victoria, BC V9E 1J5



	Finished Sq. ft	Unfinished Sq. ft	Total Sq. ft
Main	613	948	1561
Total	613	948	1561
Garage	0	290	290

Prepared for the exclusive use of
Richard Gadoury of Pemberton Holmes
File # 2609 Measured June 05, 2013
by True Measurement 250-744-0911
Victoria, BC