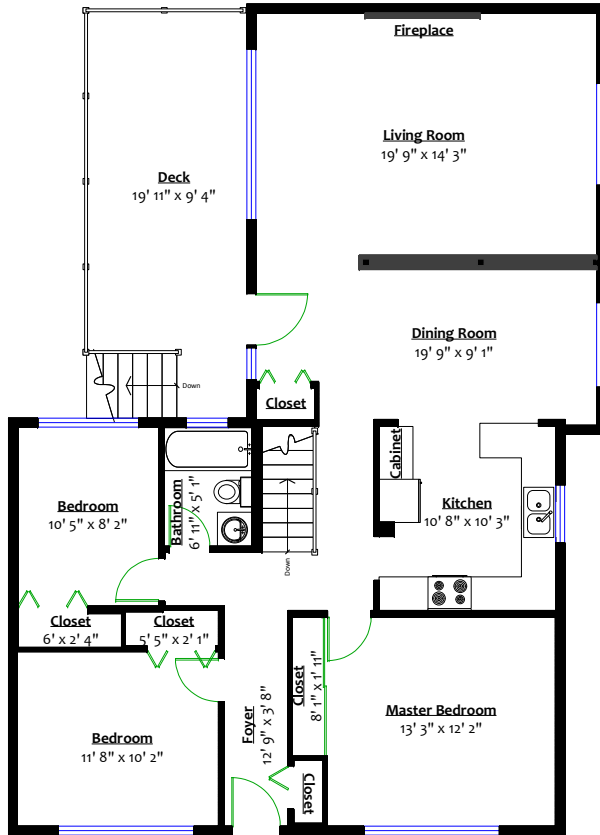




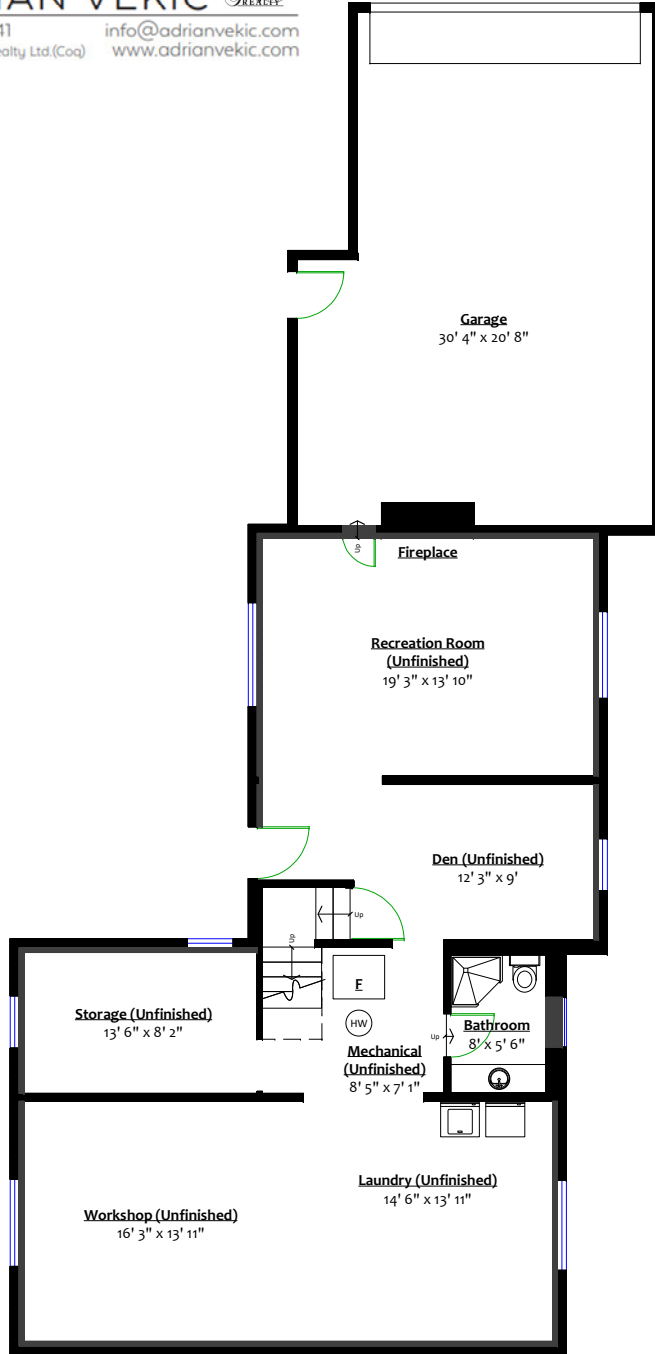
1259 Willingdon Avenue, Burnaby, B.C.

Totals**

Main Level:	1,284 sq. ft.	Garage:	609 sq. ft.
Lower Level:	44 sq. ft.	Deck:	200 sq. ft.
Total (fin.):	1,328 sq. ft.	Total:	809 sq. ft.
Lower Level (UF):	1,238 sq. ft.		
Grand Total:	2,566 sq. ft.		



MAIN LEVEL
Floor Area: 1,284 Sq. Ft.



LOWER LEVEL
Finished Floor Area: 44 Sq. Ft.
Unfinished Floor Area: 1,238 Sq. Ft.

