



Ann Watley, Personal Real Estate Corporation

ann@annwatley.com <http://www.annwatley.com>
 Office: (250) 656-3486 Direct: (250) 656-3486

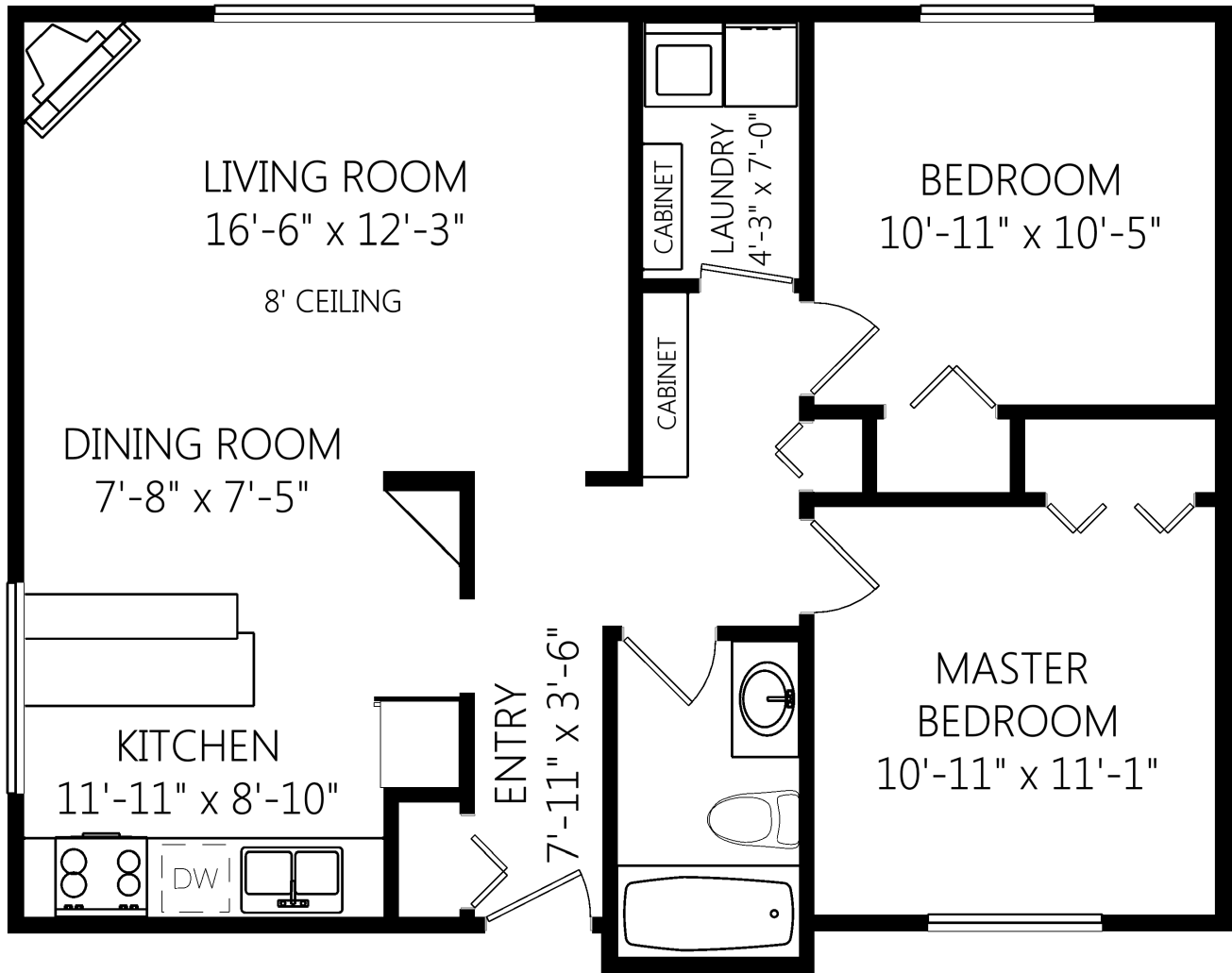
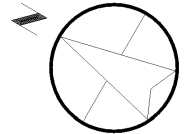


Pemberton Holmes Real Estate Ltd
 107-2360 Beacon Avenue
 Sidney, BC V8L 1X3

102-636 Granderson Rd

SINGLE LEVEL

824 FINISHED SQ.FT.



	Fin. Sq.Ft.	UnFin. Sq.Ft.	Total Sq.Ft.
Single Level	824	0	824
Total	824	0	824

Shown length and width dimensions are approximate.
 Area sq.ft. is representative of the on-site measurements. (1" accuracy)



Figures, Calculations, and Representations are for indicative and promotional purpose only.
 VI Standard Real Estate Services Inc. will not be liable for any damages of any kind arising from the mis-use of this information.