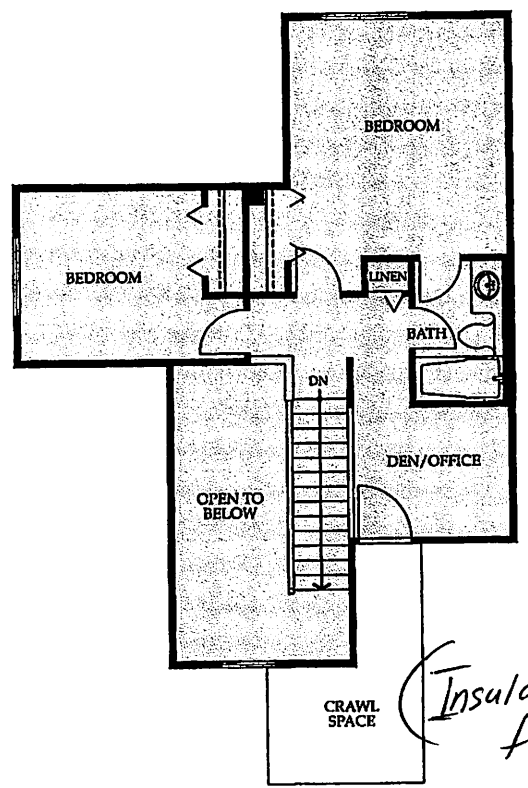
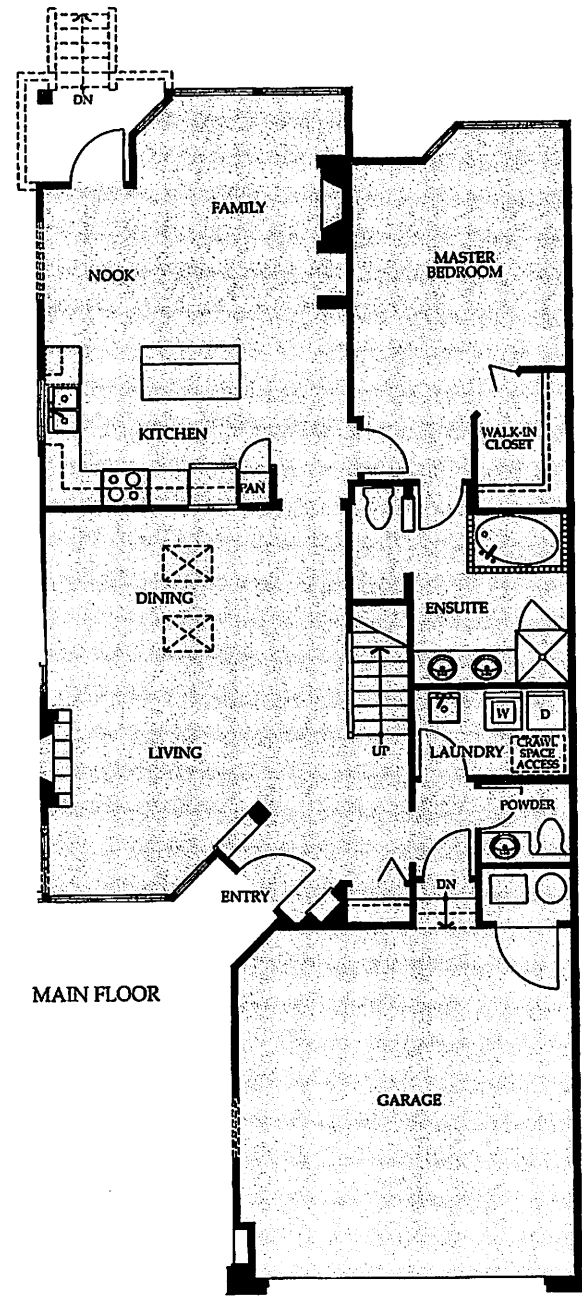




THE ASHDOWNE

Plan A1,A3 - 1,865 sq. ft.

Step into an elegant entry foyer accented by Italian ceramic tile floors and a sculpture niche. Double-height vaulted ceilings over the living and dining areas create a dramatic space for social gatherings, complete with skylights that fill the dining room with sunshine. The bright, contemporary open-plan kitchen faces a cosy breakfast nook and fireside family room, opening to the patio and fenced backyard. A convenient work island doubles as an eating bar, where guests can sip drinks and chat with the chef. A luxuriously appointed master bedroom rounds out the main level. The second level offers two additional bedrooms, a bright den overlooking the living areas below and additional storage space.



(Insulated and finished.)

The builder reserves the right to make modifications and changes should they be necessary. The quality homes at Carrington are built by Polygon Carrington Homes Ltd.