



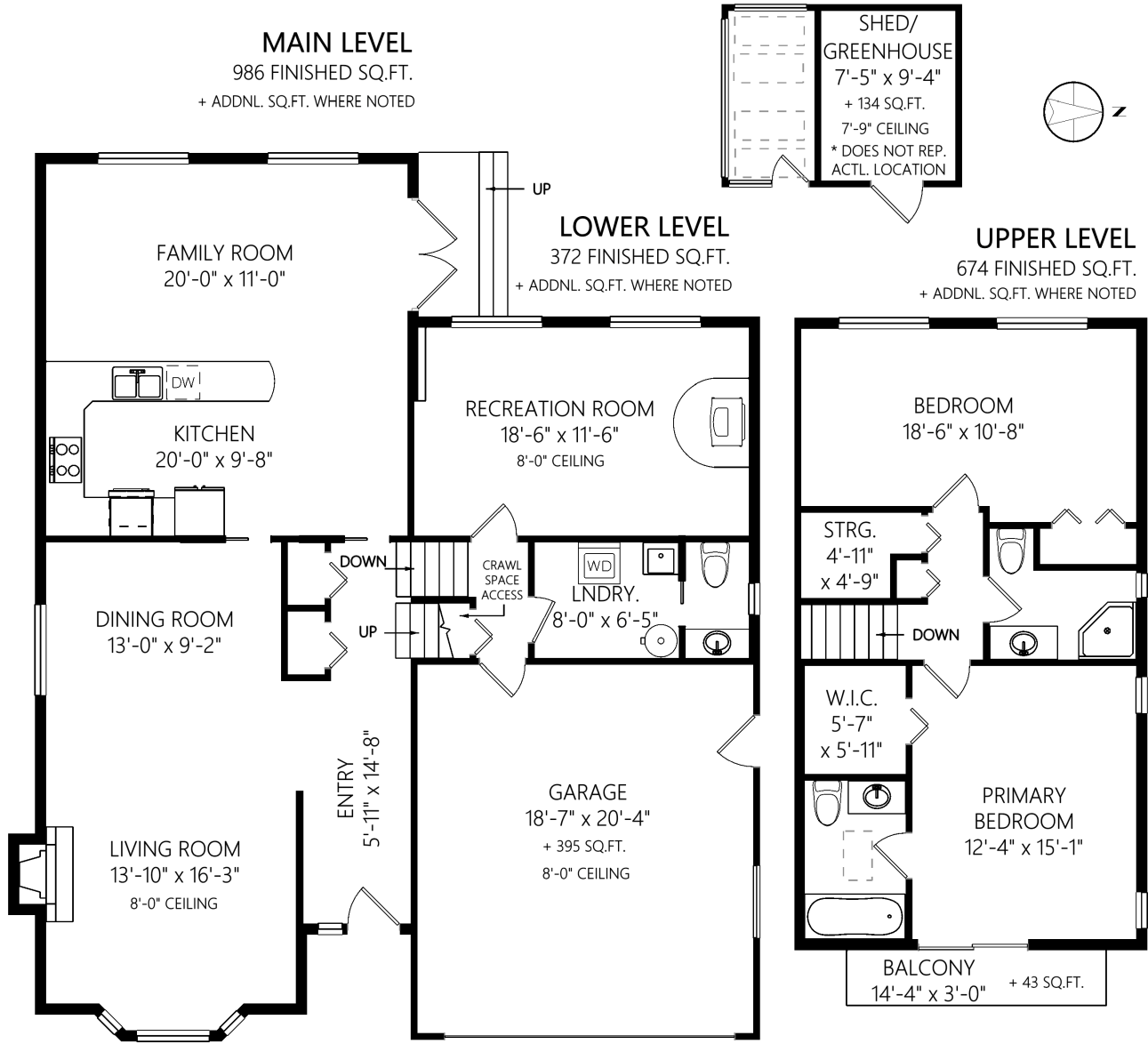
# Ann Watley, Personal Real Estate Corporation

ann@annwatley.com <http://www.annwatley.com>  
 Office: (250) 656-3486 Direct: (250) 656-3486



**Pemberton Holmes Real Estate Ltd**  
 107-2360 Beacon Avenue  
 Sidney, BC V8L 1X3

10250 Resthaven Dr



	Fin. Sq.Ft.	UnFin. Sq.Ft.	Total Sq.Ft.
Garage	0	0	0
Upper Level	674	0	674
Main Level	986	0	986
Lower Level	372	0	372
<b>Total</b>	<b>2032</b>	<b>0</b>	<b>2032</b>

Shown length and width dimensions are approximate.  
 Area sq.ft. is representative of the on-site measurements. (1" accuracy)



Figures, Calculations, and Representations are for indicative and promotional purpose only.  
 VI Standard Real Estate Services Inc. will not be liable for any damages of any kind arising from the mis-use of this information.