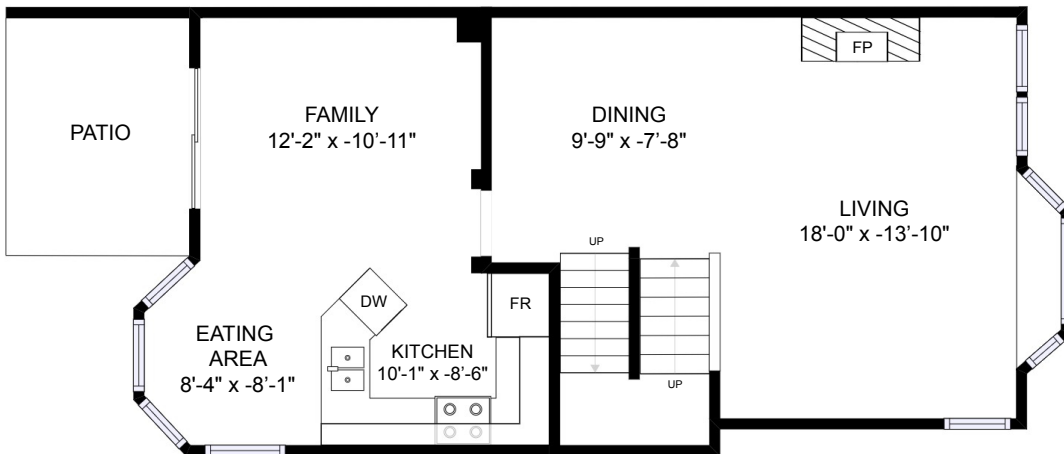
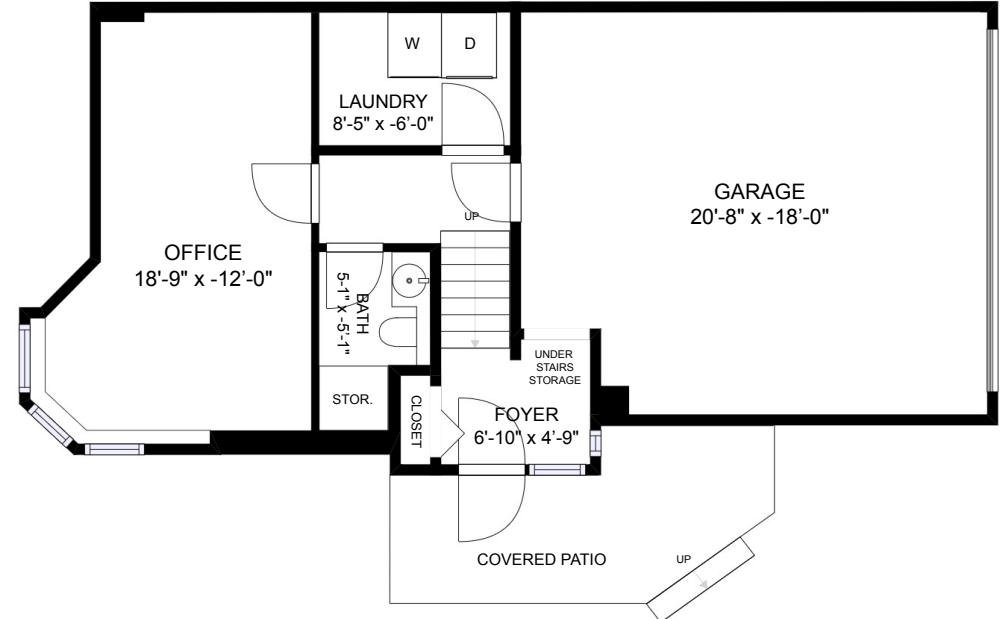
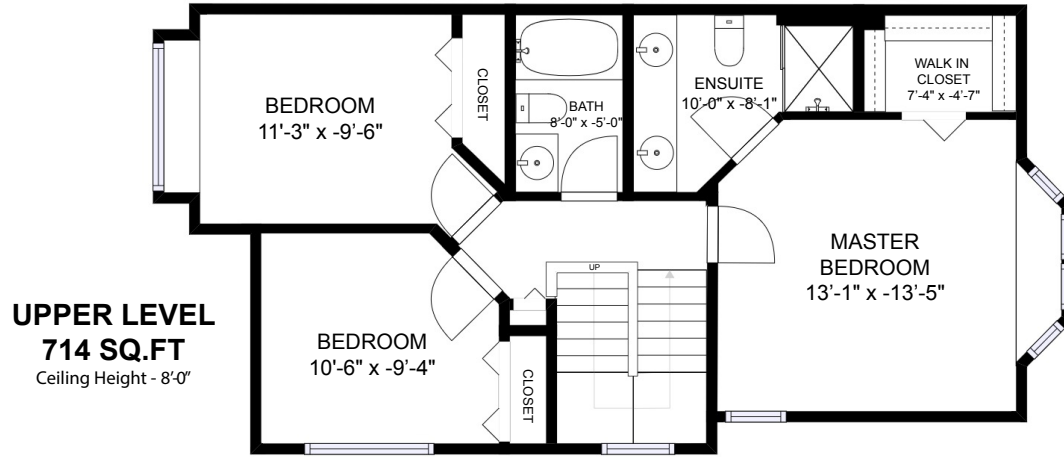


#1 - 5950 Oakdale Rd

Burnaby, BC

Main :	767 SQ.FT.
Upper:	714 SQ.FT.
Lower:	369 SQ.FT.
Total :	1850 SQ.FT.
Garage:	374 SQ.FT.
Total Extras:	374 SQ.FT.



Measurements are approximate and taken from interior walls. To be used for illustrative purposes only. Floorplan measured by Angus Macgillivray on March 7, 2021.