

JUDY SEHLING & FORREST KIDD

REAL ESTATE
You Can Trust

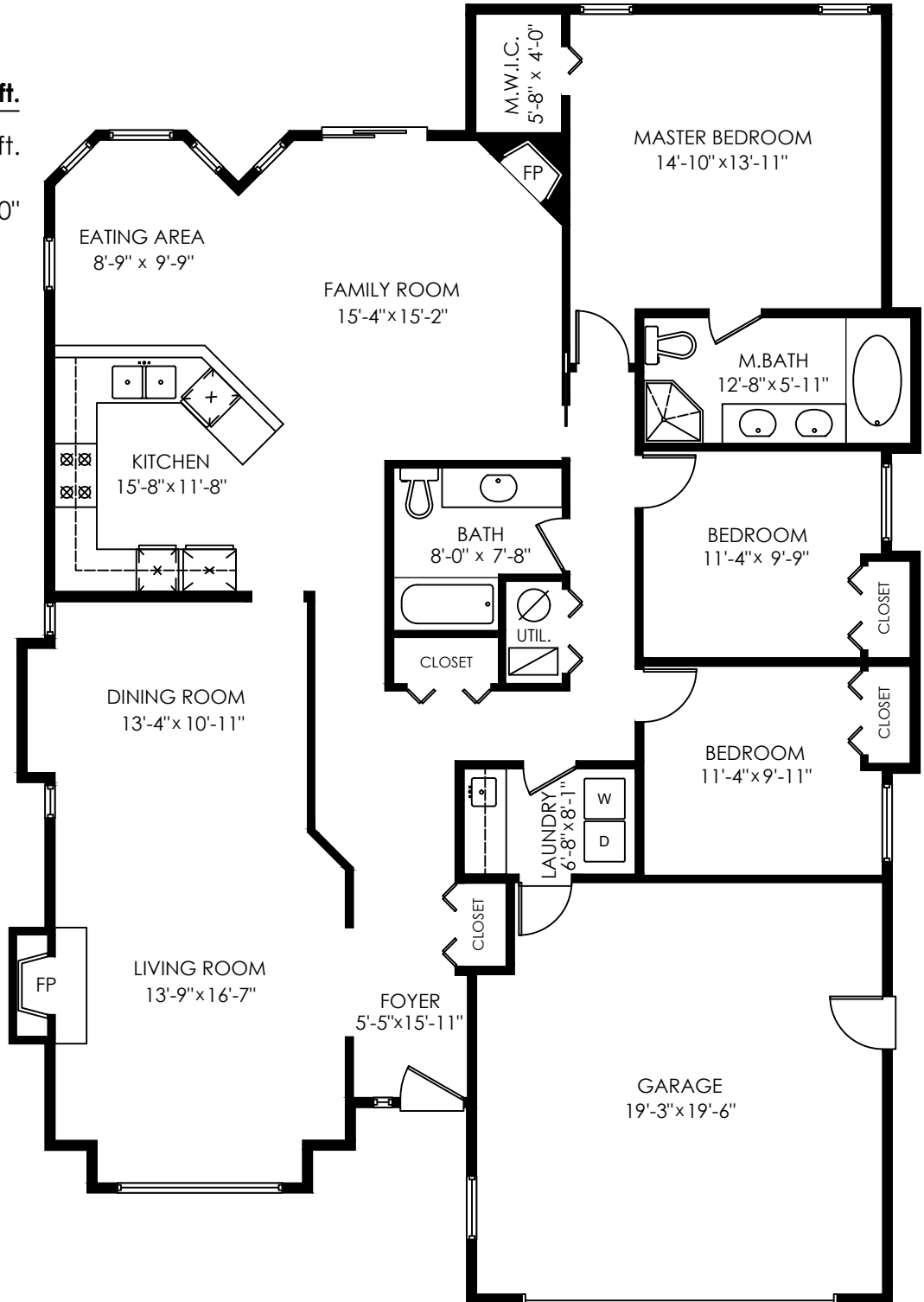
www.RealEstateYouCanTrust.ca | info@realestateyoucantrust.ca
778-355-6400

4501 223A St. Langley, BC

Floor Area: 1,852 sq.ft.

Garage: 390 sq.ft.

Ceiling Height: 8'-0"



SCALE
0' 5'

kw REALTY
VANCENTRAL
KELLERWILLIAMS

Measuring, Design & Permits | 604-876-3738

E&O Insured for \$1,000,000. Total square foot calculated to gross unit area SQFT based on interior measurements to exterior walls, not taken from original blueprints, may include unfinished area. www.DraftOnSite.com

