



Floorplans ~ 2504 – 37th Avenue

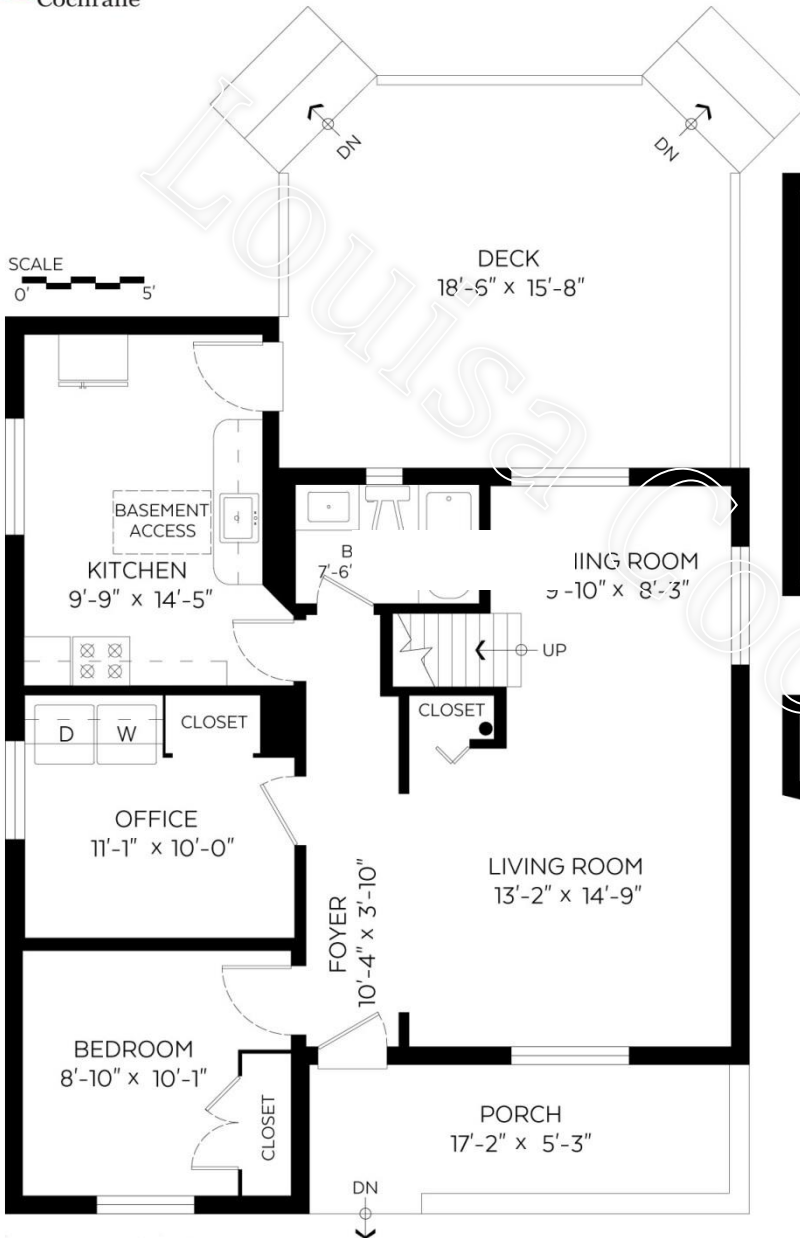


Louisa
Cochrane

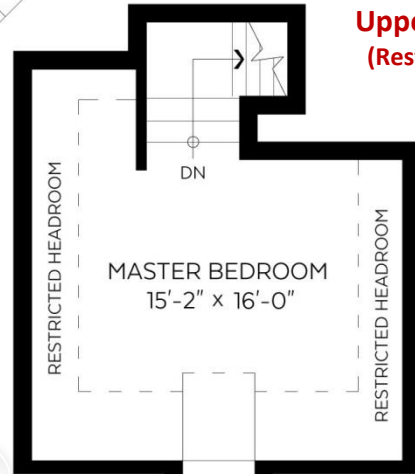
Auxiliary Area

Deck: 276 sq.ft
Porch: 95 sq.ft

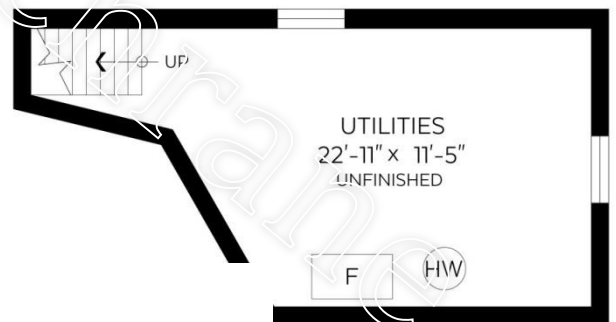
Heather Angel
Licensed Realtor®



Main Floor Plan - 890 Sq.Ft.



**Upper Level - 169 Sq.ft
(Restricted HR – 114 Sqft)**



Lower Level Unfinished – 250 Sq.Ft.

Total – 1,309 Sq.ft. / Finished 1,059 SqFt

Royal LePage Downtown Realty
4007 – 32nd St., Vernon BC V1T 5P2



www.louisacochrane.com

Office# - 778.475.1089 * Cell# - 250.550.6561 * Email - Louisa@realvernon.ca