

#401 6026 Tisdall Street,
Vancouver, BC



BRIAN, ROSALEE, SHANNON & JAMIE

RE/MAX Select Properties

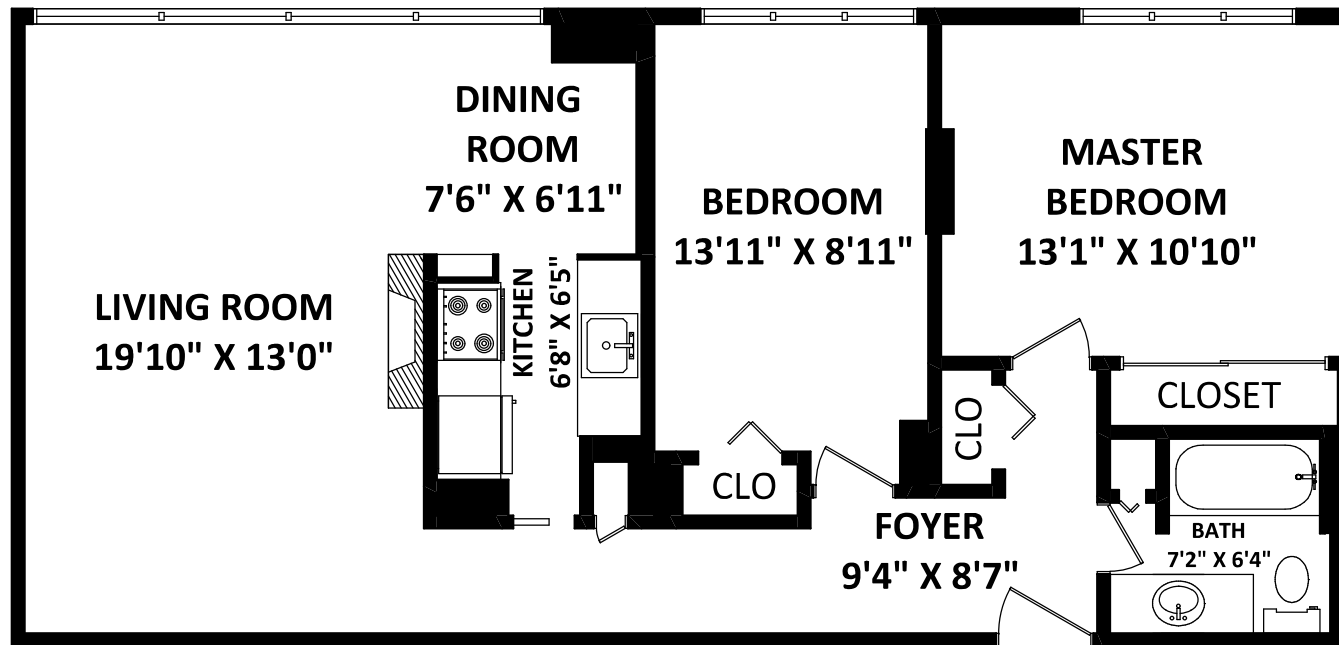
Cell: 604-785-4324

Office: 604-737-8865

info@yourhomevancouver.ca

www.yourhomevancouver.ca

**TOTAL FINISHED AREA:
890 SQ.FT.**



FLOOR PLAN BY:

[JUNE 26, 2019]



TEL: 604-575-1244
www.seevirtual360.com

DISCLAIMER:

1. MEASUREMENTS ARE FOR PROMOTIONAL USE ONLY & ARE NOT INTENDED FOR CONSTRUCTION USE. ROOM DIMENSIONS ARE APPROXIMATE. MEASUREMENTS & CALCULATIONS FOR FINISHED AREAS ARE E&O INSURED.
 2. FINISHED AREAS ARE ENCLOSED AREAS IN A HOUSE THAT ARE SUITABLE FOR YEAR-ROUND USE, EMBODYING WALLS, FLOORS, AND CEILINGS THAT ARE SIMILAR TO THE REST OF THE HOUSE. (ANSI Z765-2013)
 3. THIS FLOOR PLAN MAY ONLY BE REPRODUCED WITH PERMISSION OF THE REALTOR(S) ON THIS FLOOR PLAN.
- * ANY MEASUREMENT WITH AN ASTERISK (*) OR (APPROX) ARE APPROXIMATE AND FOR ILLUSTRATION PURPOSES ONLY AND ARE NOT E&O INSURED.

