

9200 General Currie Road, Richmond



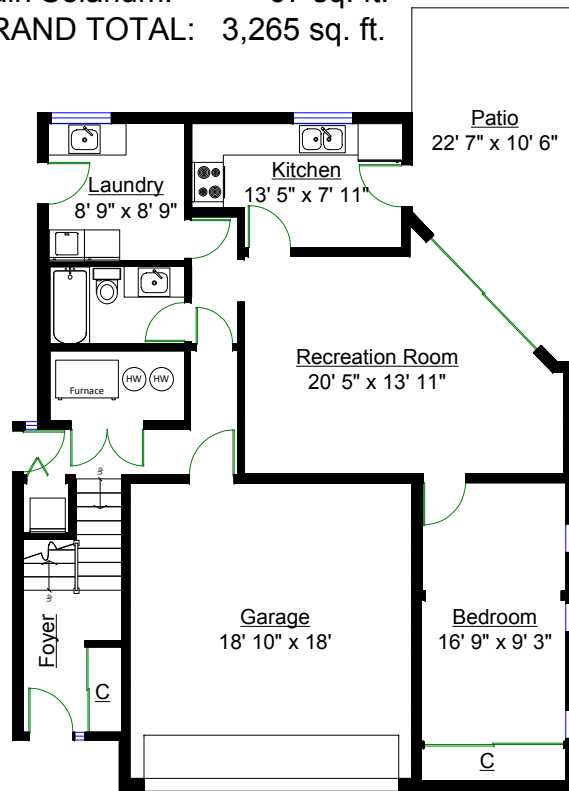
Greg & Liz Holmes
778-834-9929

Totals**

Main Level: 1,214 sq. ft.
 Lower Level: 1,022 sq. ft.
 Upper Level: 893 sq. ft.
 TOTAL(FIN.): 3,129 sq. ft.
 Upper Solarium: 69 sq. ft.
 Main Solarium: 67 sq. ft.
 GRAND TOTAL: 3,265 sq. ft.

Other Areas

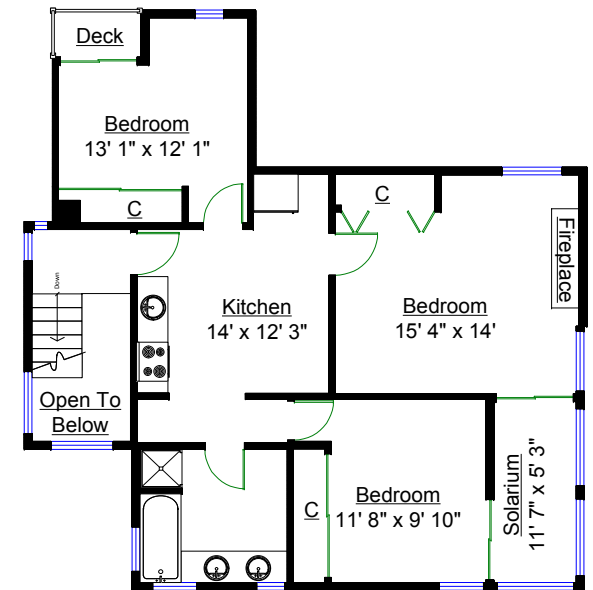
Main Deck: 504 sq. ft.
 Patio: 192 sq. ft.
 Balcony: 70 sq. ft.
 Upper Deck: 17 sq. ft.
 Garage: 356 sq. ft.
 TOTAL: 1,139 sq. ft.



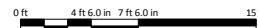
LOWER LEVEL



MAIN LEVEL



UPPER LEVEL



** Approx. based on interior measurements to exterior walls
 ** Total square footage not taken from original blueprints