

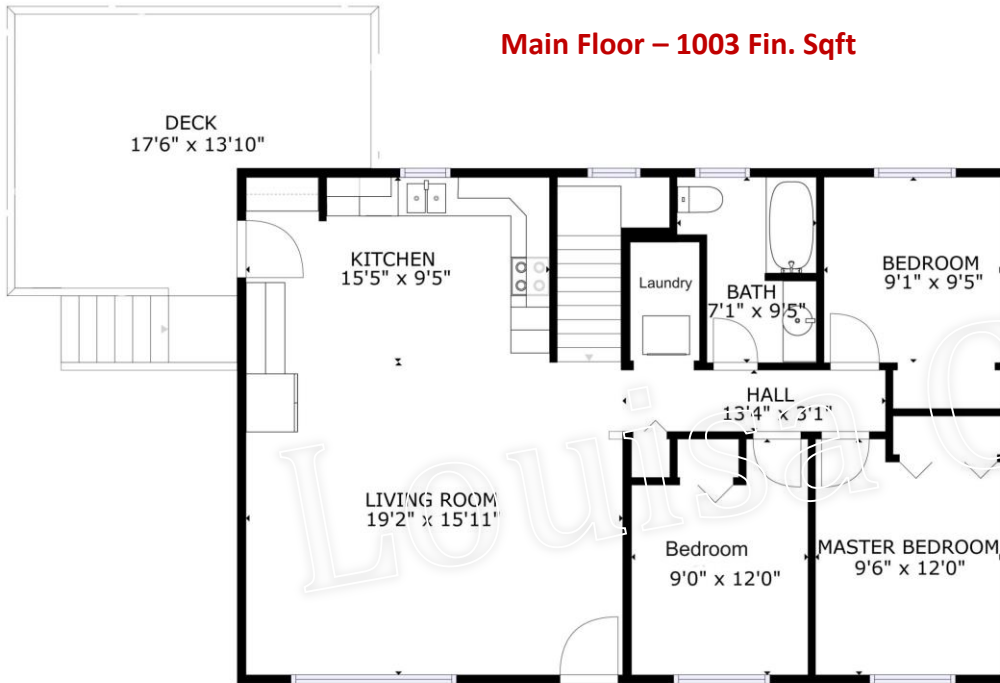


# Floorplans ~ 3313 Belaire Drive

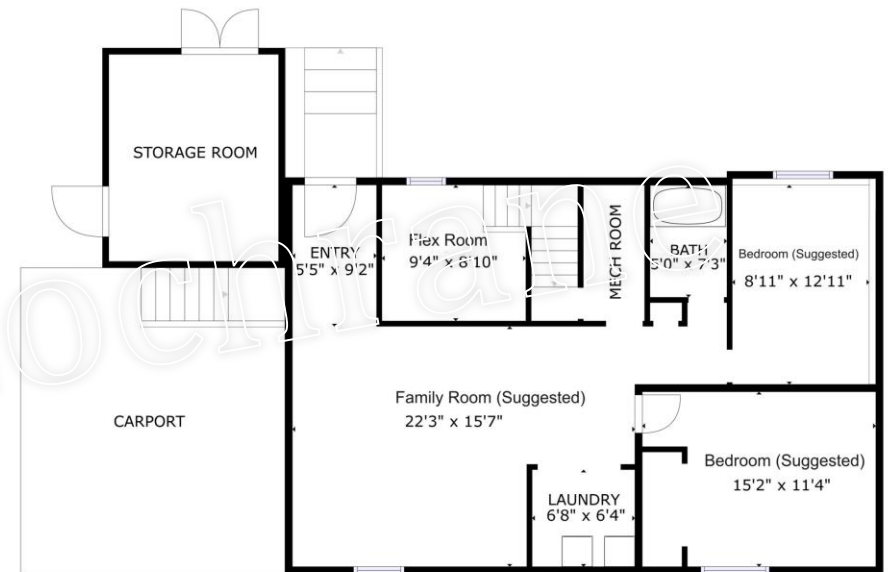


*Louisa*  
Cochrane

**Main Floor – 1003 Fin. Sqft**



**Lower Floor – 1033 Sqft**



**Total – 2,036 Sqft**

Royal LePage Downtown Realty  
4007 – 32<sup>nd</sup> St., Vernon BC V1T 5P2



[www.louisacochrane.com](http://www.louisacochrane.com)

Office# - 778.475.1089 \* Cell# - 250.550.6561 \* Email - [Louisa@realvernon.ca](mailto:Louisa@realvernon.ca)