

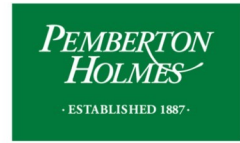
Cliff Wettlaufer

TRUST. INTEGRITY. PERFORMANCE.

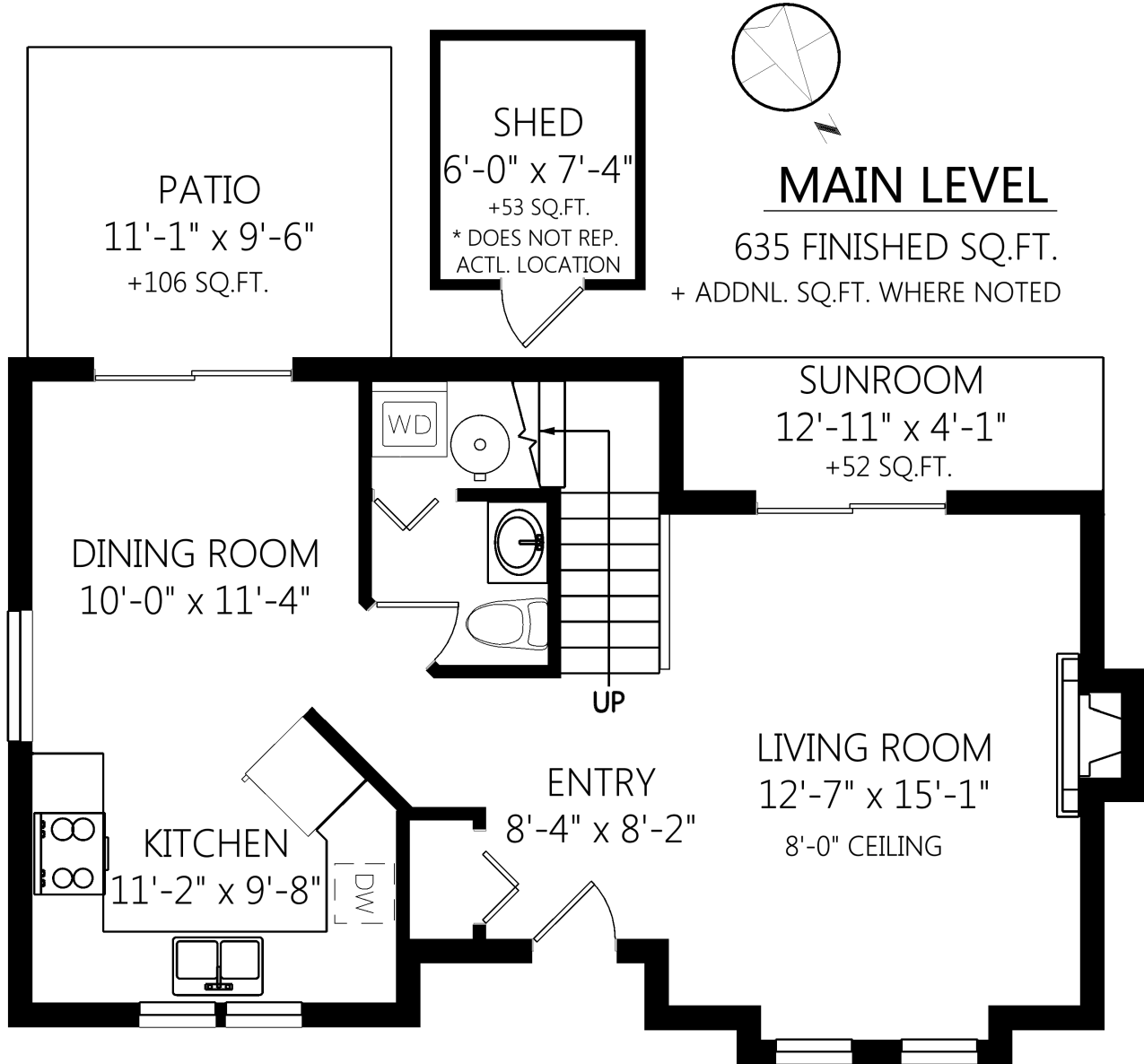
cliffhouzz@gmail.com <http://CliffWettlaufer.com>

Office: (250) 384-8124

Direct: (250) 589-7748



1047 Dunsmuir Rd

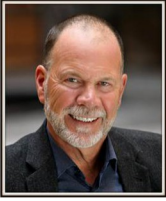


	Fin. Sq.Ft.	UnFin. Sq.Ft.	Total Sq.Ft.
Main Level	635	0	635
Upper Level	699	0	699
Total	1334	0	1334

Shown length and width dimensions are approximate. Area sq.ft. is representative of the on-site measurements. (1" accuracy)



Figures, Calculations, and Representations are for indicative and promotional purpose only. VI Standard Real Estate Services Inc. will not be liable for any damages of any kind arising from the mis-use of this information.

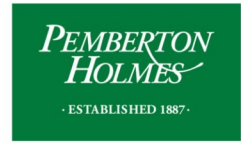


Cliff Wettlaufer

TRUST. INTEGRITY. PERFORMANCE.

cliffhouzz@gmail.com <http://CliffWettlaufer.com>

Office: (250) 384-8124 Direct: (250) 589-7748

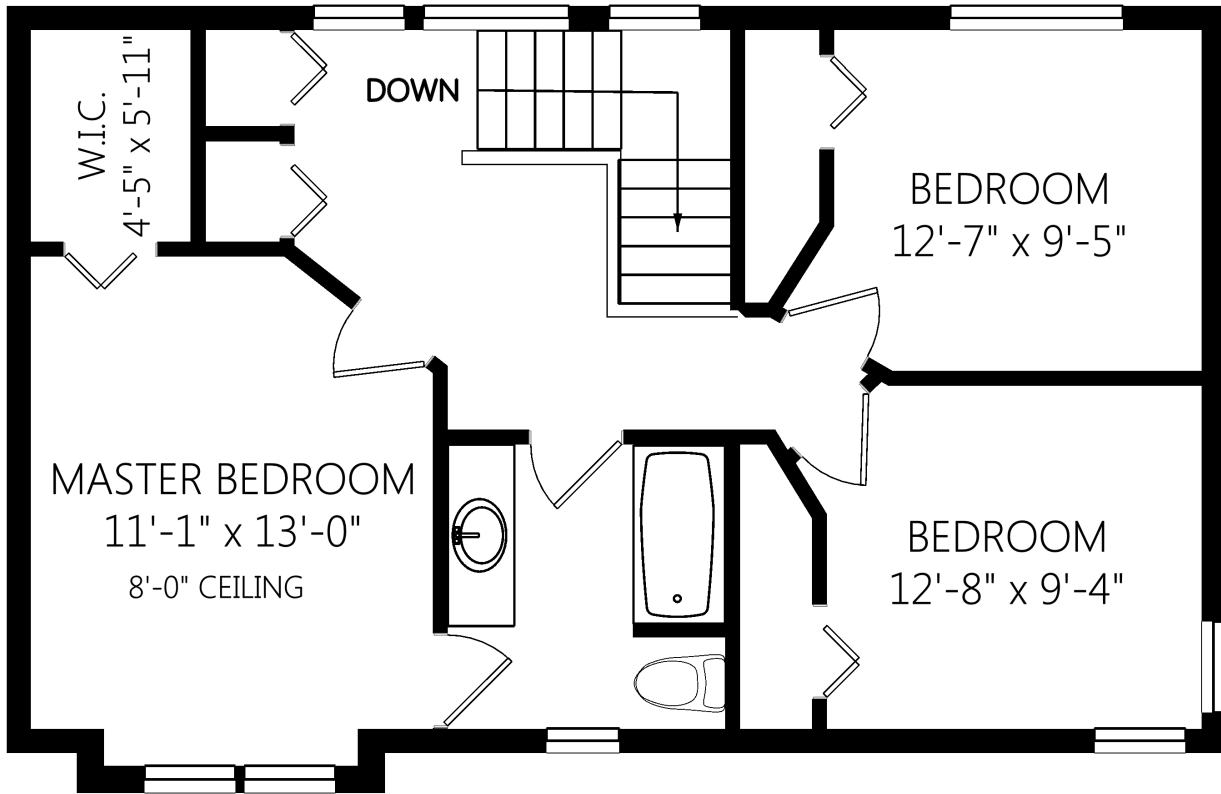
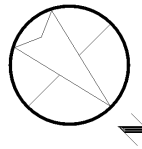


1047 Dunsmuir Rd

UPPER LEVEL

699 FINISHED SQ.FT.

+ ADDNL. SQ.FT. WHERE NOTED



	Fin. Sq.Ft.	UnFin. Sq.Ft.	Total Sq.Ft.
Main Level	635	0	635
Upper Level	699	0	699
Total	1334	0	1334

Shown length and width dimensions are approximate. Area sq.ft. is representative of the on-site measurements. (1" accuracy)



Figures, Calculations, and Representations are for indicative and promotional purpose only. VI Standard Real Estate Services Inc. will not be liable for any damages of any kind arising from the mis-use of this information.