

35 Henrietta St, Toronto, ON

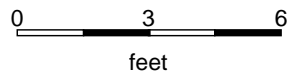
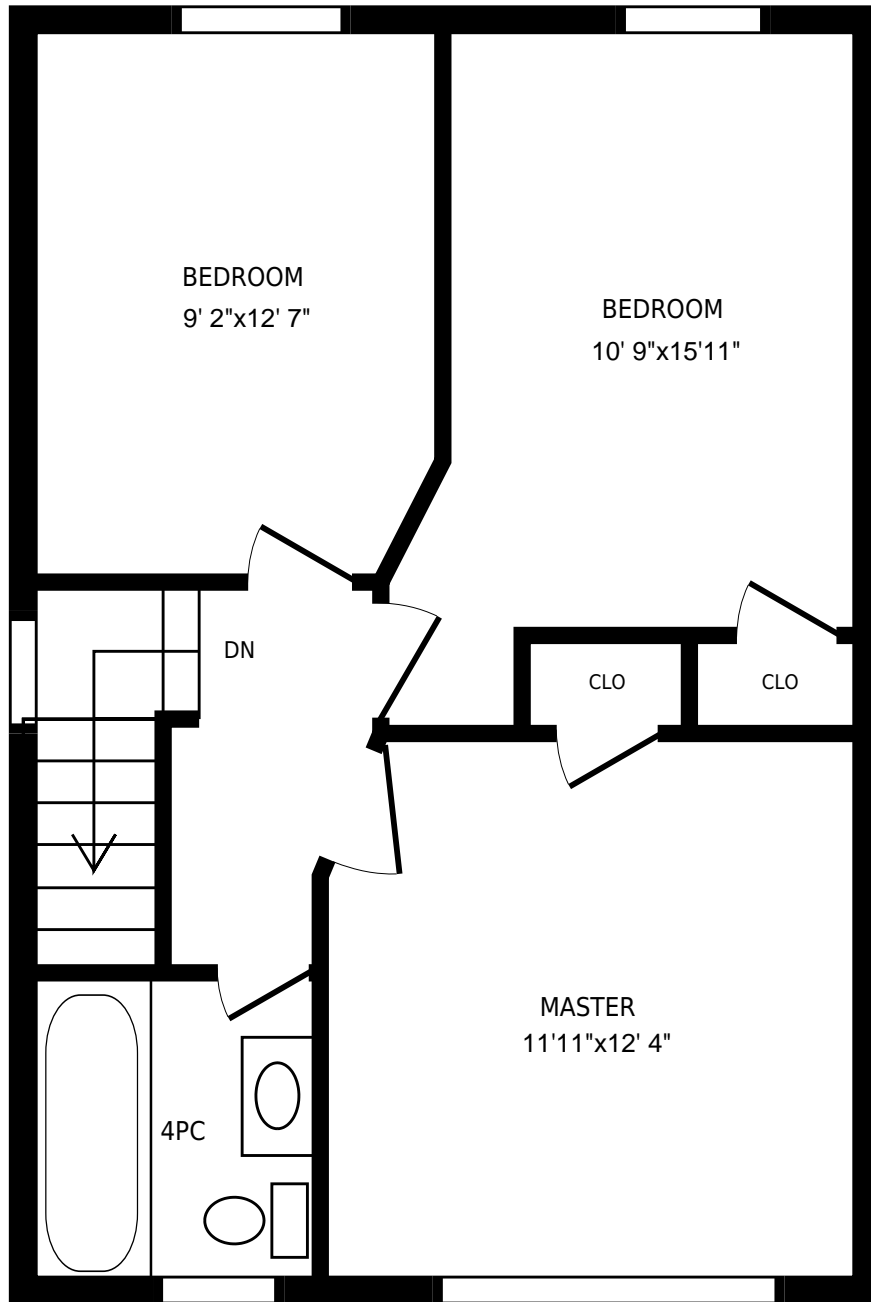
PREPARED FOR:

Main floor

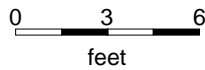
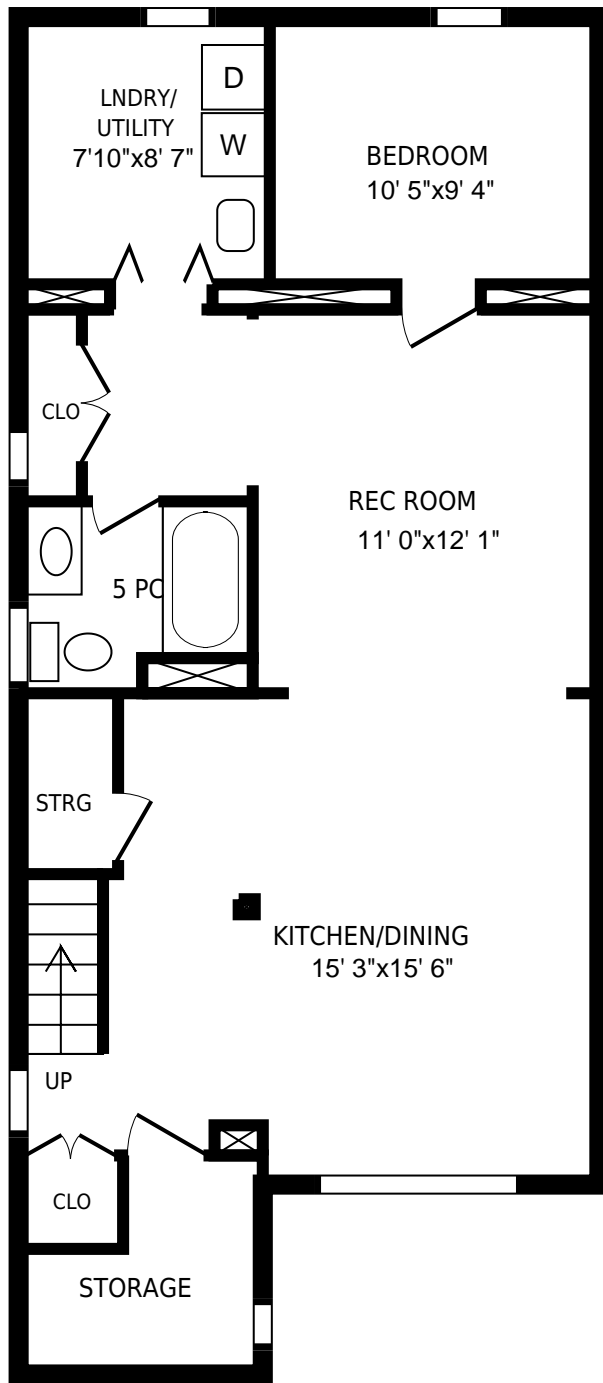
Usable Floor Area (UFA): 730 sq. ft
Gross Floor Area (GFA): 770 sq. ft

PREPARED ON:
Feb, 2016

All rooms dimensions and floor areas must be considered approximate and are subject to independent verification. For method of measurement please see <http://youriguide.com/measure/>.



35 Henrietta St, Toronto, ON		PREPARED FOR:
2nd floor		
Usable Floor Area (UFA):	510 sq. ft	PREPARED ON:
Gross Floor Area (GFA):	550 sq. ft	Feb, 2016
<small>All rooms dimensions and floor areas must be considered approximate and are subject to independent verification. For method of measurement please see http://youriguide.com/measure/.</small>		



<p>35 Henrietta St, Toronto, ON</p> <p>Basement</p>	<p>PREPARED FOR:</p>
<p>Usable Floor Area (UFA): 710 sq. ft</p> <p>Gross Floor Area (GFA):</p>	<p>PREPARED ON: Feb, 2016</p>
<p>All rooms dimensions and floor areas must be considered approximate and are subject to independent verification. For method of measurement please see http://youriguide.com/measure/.</p>	