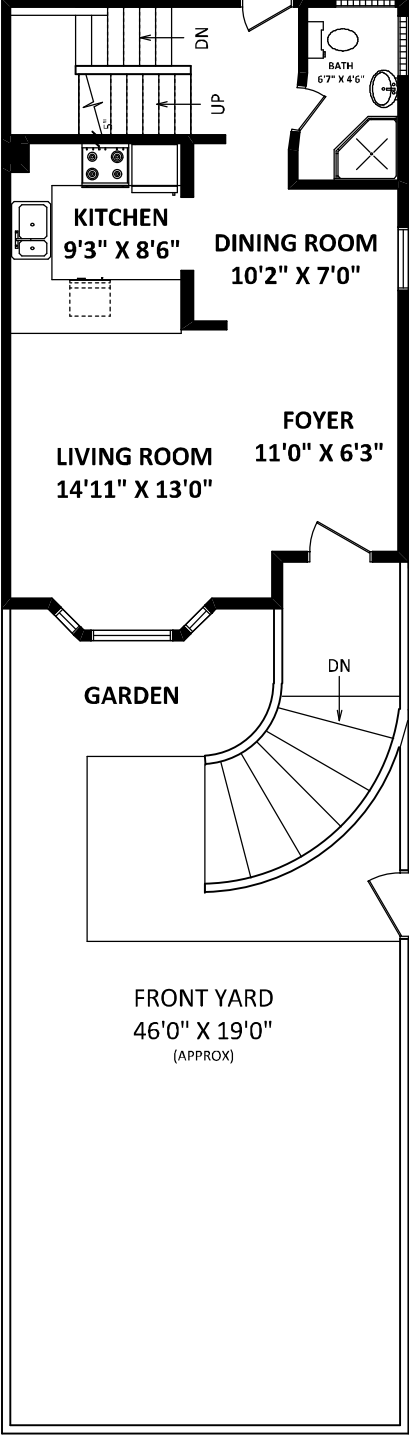


**298 West 16th Avenue,**  
**Vancouver, BC**

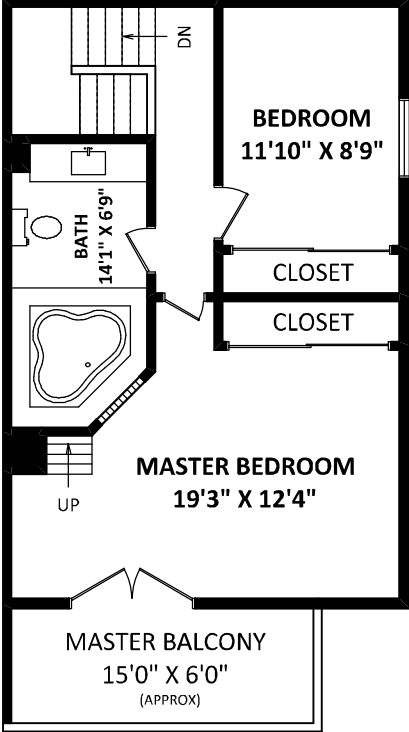


**TOTAL FINISHED AREA: 1920 SQ.FT.**

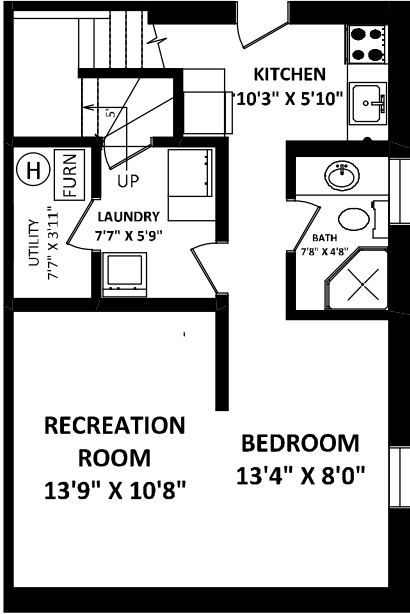
OTHER AREA(S)  
 FRONT YARD: 765 SQ.FT.\*  
 MASTER BALCONY: 90 SQ.FT.\*



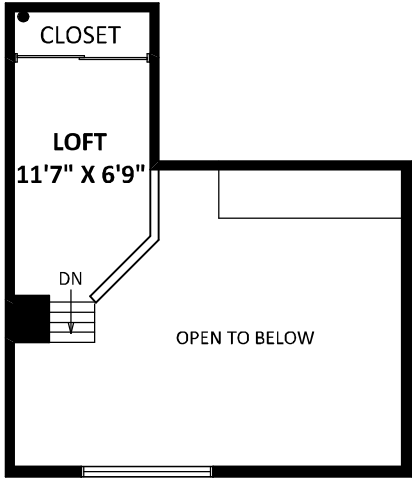
**MAIN FLOOR: 594 SQ.FT.**



**UPPER FLOOR: 598 SQ.FT.**



**LOWER FLOOR: 598 SQ.FT.**



**TOP FLOOR: 130 SQ.FT.**

FLOOR PLAN BY: [SEPTEMBER 4, 2015]  
  
 TEL: 604-575-1244  
 www.seevirtual360.com

GENERAL NOTES:  
 1. MEASUREMENTS ARE FOR PROMOTIONAL USE ONLY & ARE NOT INTENDED FOR CONSTRUCTION USE. ROOM DIMENSIONS ARE APPROXIMATE. MEASUREMENTS & CALCULATIONS FOR FINISHED AREAS ARE E&O INSURED.  
 2. FINISHED AREAS ARE ENCLOSED AREAS IN A HOUSE THAT ARE SUITABLE FOR YEAR-ROUND USE, EMBODYING WALLS, FLOORS, AND CEILINGS THAT ARE SIMILAR TO THE REST OF THE HOUSE. (ANSI Z765-2003)  
 3. THIS FLOOR PLAN MAY ONLY BE REPRODUCED WITH PERMISSION OF THE REALTOR(S) ON THIS FLOOR PLAN.  
 \* ANY MEASUREMENT WITH AN ASTERISK (\*) OR (APPROX) ARE APPROXIMATE AND FOR ILLUSTRATION PURPOSES ONLY AND ARE NOT E&O INSURED.

