



ROYAL LEPAGE  
**RED  
DIAMOND  
AWARD**

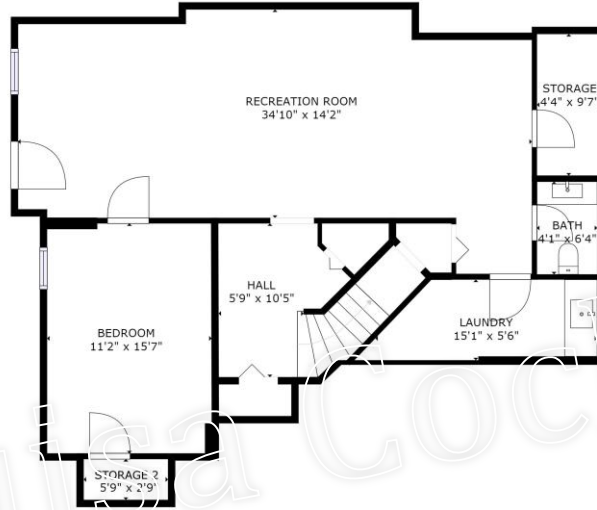
# Floorplans ~ 321 Scenic Drive



**Heather** Angel  
Licensed Realtor®

*Louisa*  
Cochrane

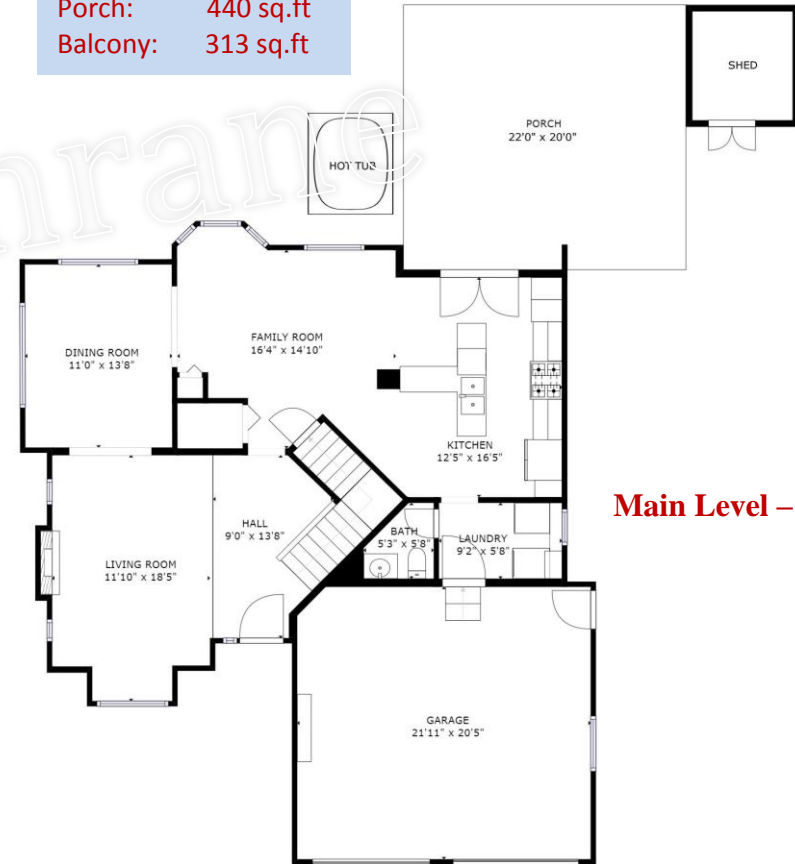
**Lower Level – 915 sq.ft**



### Auxiliary Area

Garage: 445 sq.ft  
 Porch: 440 sq.ft  
 Balcony: 313 sq.ft

**Upper Floor – 875 Sq.Ft**



**Main Level – 1,154 sq.ft**

**Total – 3,531 SqFt // 2944 Fin. SqFt**

Royal LePage Downtown Realty  
4007 – 32<sup>nd</sup> St., Vernon BC V1T 5P2

Office# - 778.475.1089 \* Cell# - 250.550.6561 \* Email - [Louisa@realvernon.ca](mailto:Louisa@realvernon.ca)

