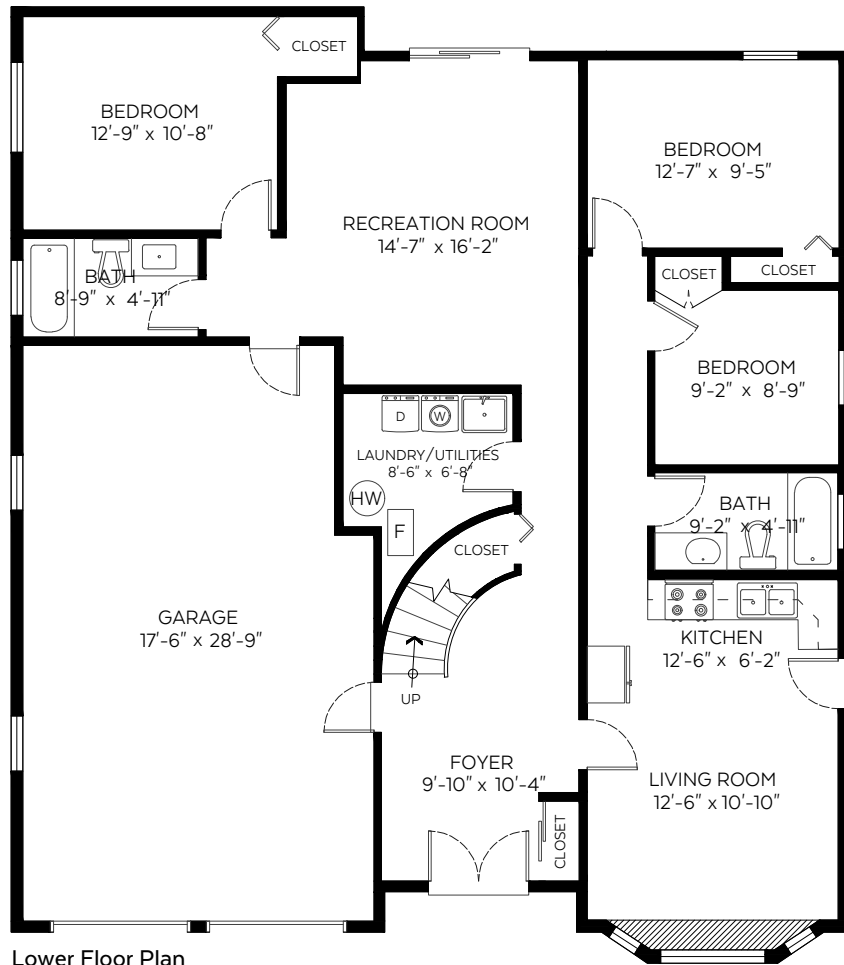


11745 72 Avenue, Delta, B.C.

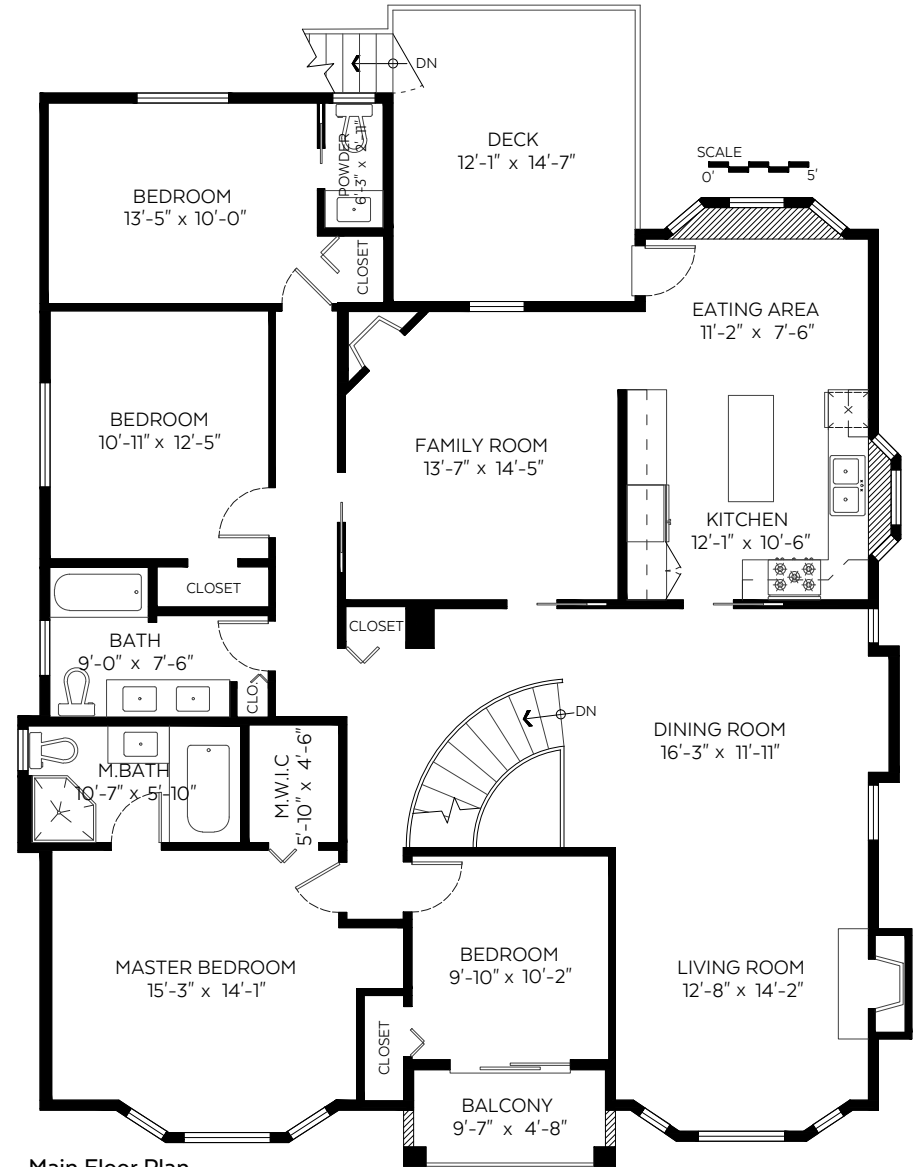
Main Floor:	1,923 sq.ft.
Lower Floor:	1,347 sq.ft.
Total:	3,270 sq.ft.
Open to Below:	16 sq.ft.

Auxiliary Area

Garage:	513 sq.ft.
Deck:	176 sq.ft.
Balcony:	44 sq.ft.



Lower Floor Plan
Floor Area: 1,347 sq.ft.



Main Floor Plan
Floor Area: 1,923 sq.ft.

Measured on: October 05, 2020



The floor plan is not suitable for architectural/construction and is covered under E&O. © Excelsior Measuring Inc. 2020. All rights reserved for Excelsior Measuring Inc. Users shall not publish and distribute such material (in whole or in part) and/or incorporate it in other works in any form.



NORTH



ALL IN ONE
PRODUCTIONS
778.240.2467