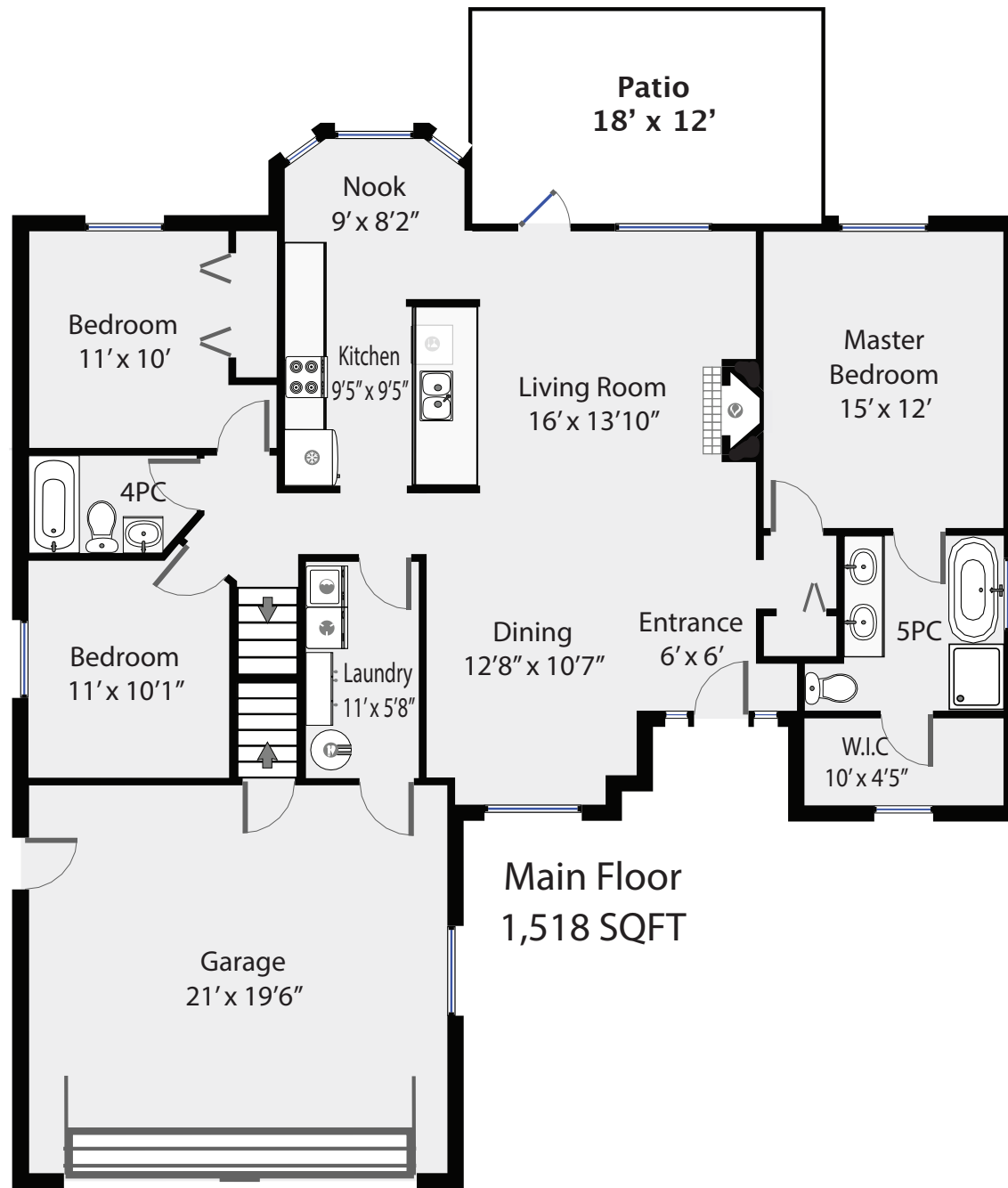


1889 Sussex Drive

Total Square Footage
1,770 SQFT

Upper Floor
252 SQFT



RE/MAX
PREPARED FOR

COURTNEY & ANGLIN

REAL ESTATE GROUP

Swift Home Tours
250-218-5671

PREPARED FOR EXCLUSIVE USE OF MICHELE COURTNEY & BILL ANGLIN
MEASUREMENTS ON PLANS ARE INTENDED FOR VISUAL
REFERENCE ONLY AND SHOULD BE VERIFIED.
ALL AREA SQFT TOTALS ARE INCLUSIVE OF EXTERIOR WALLS.
ALL INTERIOR DIMENSIONS ARE FROM INTERIOR WALLS.