

**202 7th Street,
New Westminster, B.C.**

Totals**

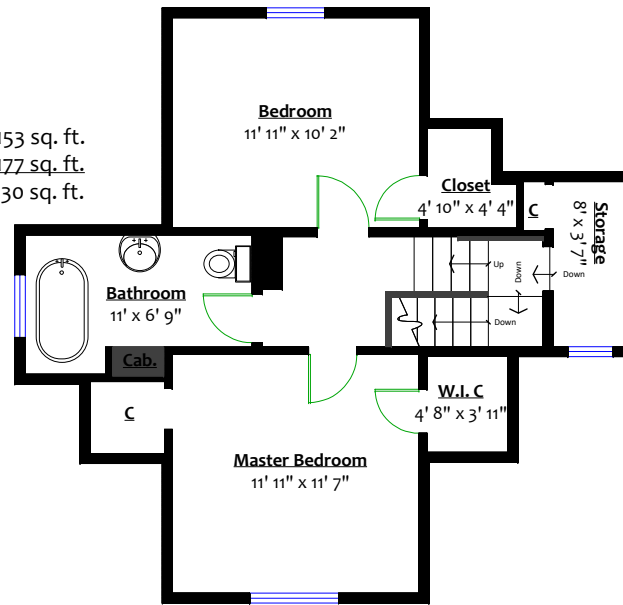
Main Level:	710 sq. ft.	Deck:	153 sq. ft.
Upper Level:	561 sq. ft.	Patio:	177 sq. ft.
Lower Level:	695 sq. ft.	Total:	330 sq. ft.
Total:	1,966 sq. ft.		



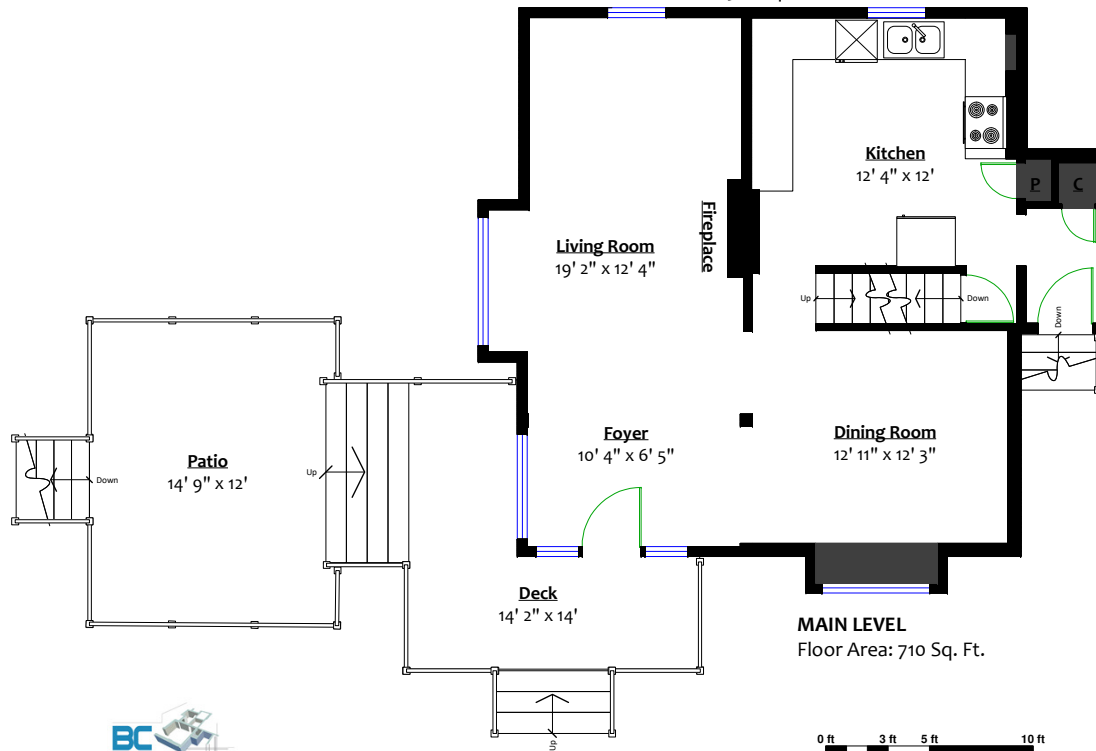
ELIO PARENTE - PREC*

604-720-8829

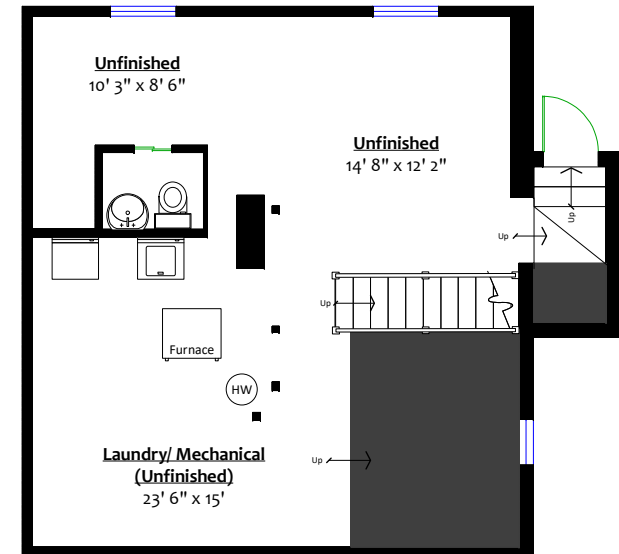
LOWERMAINLANDPROPERTY@GMAIL.COM



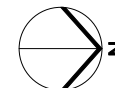
UPPER LEVEL
Floor Area: 561 Sq. Ft.



MAIN LEVEL
Floor Area: 710 Sq. Ft.



LOWER LEVEL
Floor Area: 695 Sq. Ft.



** Approx. based on interior measurements to exterior walls
 = Total square footage not taken from original blueprints
 = Includes under-height and unfinished areas