

# 32 Bermondsey Ct NW, Calgary, AB

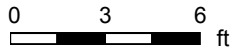
Main Building: Total Exterior Area Above Grade 1718 sq ft



**Main Floor**  
Exterior Area 618 sq ft

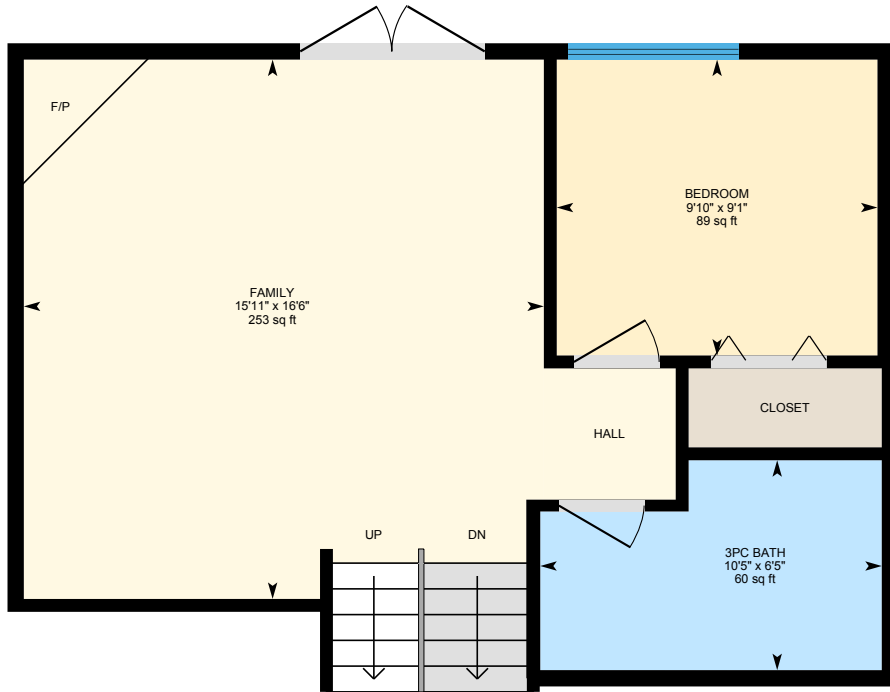


**2nd Floor**  
Exterior Area 593 sq ft

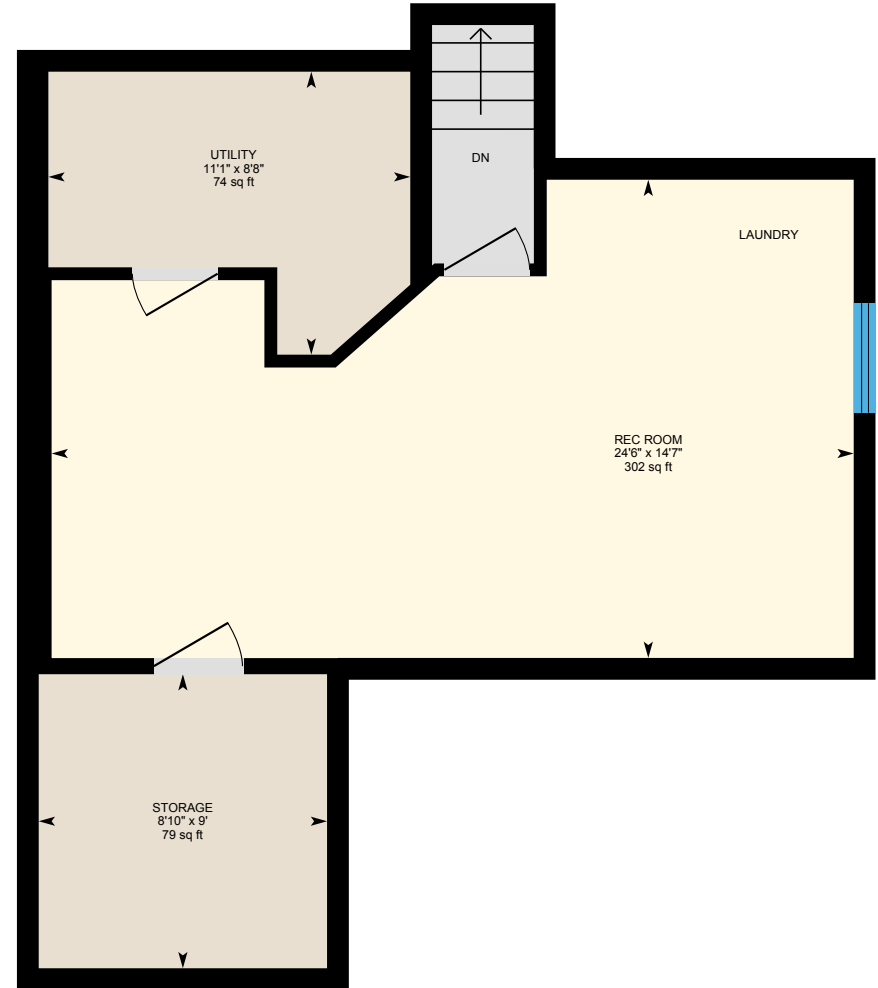


# 32 Bermondsey Ct NW, Calgary, AB

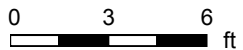
Main Building: Total Exterior Area Above Grade 1718 sq ft



**Lower Floor**  
Exterior Area 507 sq ft



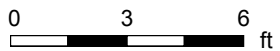
**Basement (Below Grade)**  
Exterior Area 569 sq ft



PREPARED: Jul, 2020

# 32 Bermondsey Ct NW, Calgary, AB

**Main Floor** Total Exterior Area 618 sq ft  
Total Interior Area 570 sq ft



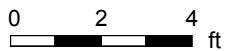
PREPARED: Jul, 2020



White regions are excluded from total floor area. All room dimensions and floor areas must be considered approximate and are subject to independent verification. For method of measurement please see <https://youriguide.com/measure/>.

# 32 Bermondsey Ct NW, Calgary, AB

2nd Floor Total Exterior Area 593 sq ft  
Total Interior Area 544 sq ft



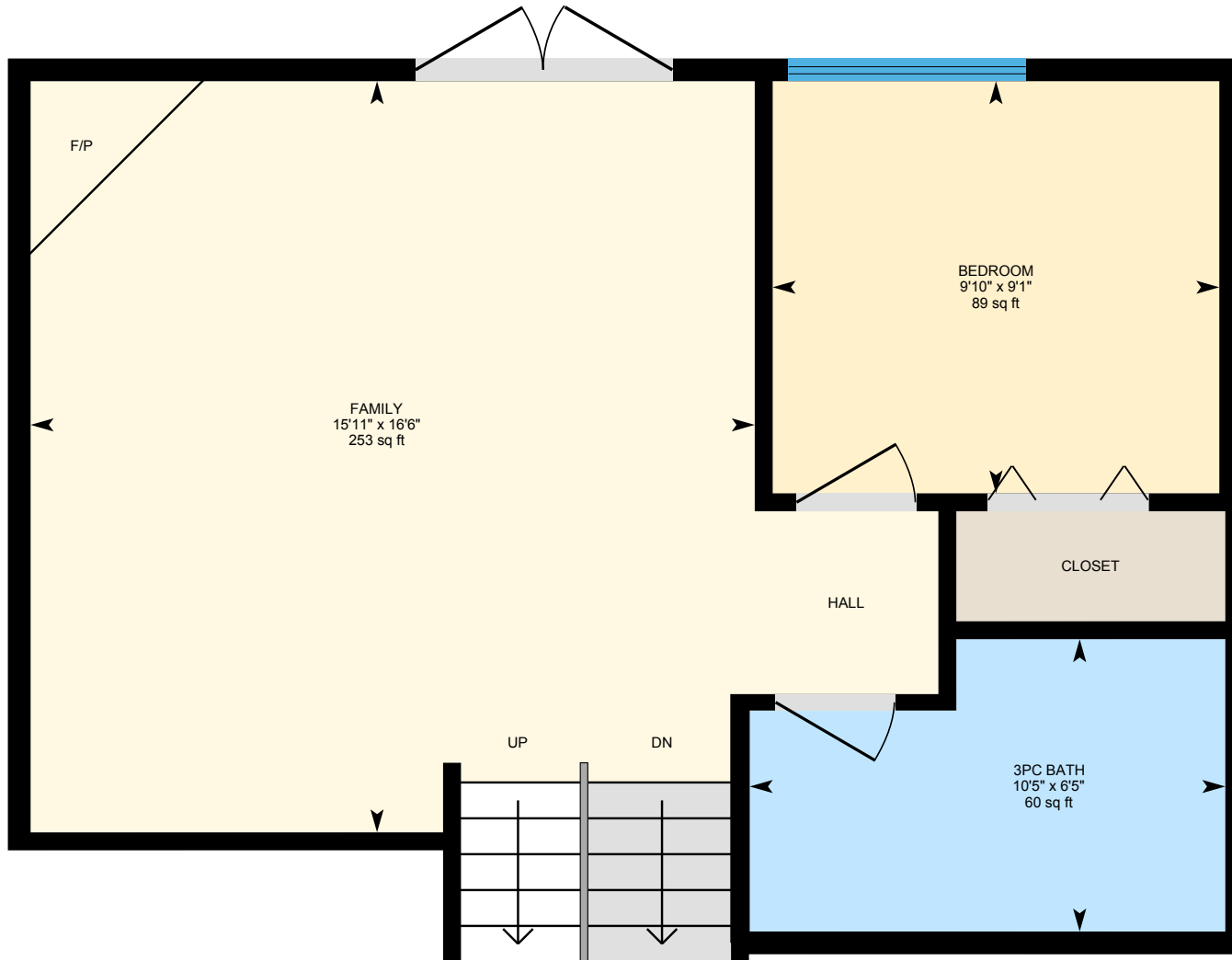
PREPARED: Jul, 2020



White regions are excluded from total floor area. All room dimensions and floor areas must be considered approximate and are subject to independent verification. For method of measurement please see <https://youriguide.com/measure/>.

# 32 Bermondsey Ct NW, Calgary, AB

Lower Floor Total Exterior Area 507 sq ft  
Total Interior Area 460 sq ft



0 2 4 ft

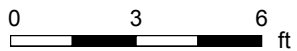
PREPARED: Jul, 2020



White regions are excluded from total floor area. All room dimensions and floor areas must be considered approximate and are subject to independent verification. For method of measurement please see <https://youriguide.com/measure/>.

# 32 Bermondsey Ct NW, Calgary, AB

**Basement** Total Exterior Area 569 sq ft  
Total Interior Area 496 sq ft



PREPARED: Jul, 2020



# 32 Bermondsey Ct NW, Calgary, AB

## Property Details

### Room Measurements

Only major rooms are listed. Some listed rooms may be excluded from total interior floor area (e.g. garage). Room dimensions are largest length and width; parts of room may be smaller. Room area is not always equal to product of length and width.

#### Main Building

##### MAIN FLOOR

Dining: 9'7" x 15'5" | 141 sq ft  
Kitchen: 14'4" x 12'9" | 156 sq ft  
Living: 11'10" x 17'2" | 199 sq ft

##### 2ND FLOOR

3pc Bath: 4'11" x 7'2" | 35 sq ft  
4pc Bath: 5' x 7'5" | 37 sq ft  
Bedroom: 8'11" x 8'9" | 78 sq ft  
Bedroom: 12'2" x 10'7" | 110 sq ft  
Master: 13'7" x 14'1" | 167 sq ft

##### LOWER FLOOR

3pc Bath: 10'5" x 6'5" | 60 sq ft  
Bedroom: 9'10" x 9'1" | 89 sq ft  
Family: 15'11" x 16'6" | 253 sq ft

##### BASEMENT

Rec Room: 24'6" x 14'7" | 302 sq ft  
Storage: 8'10" x 9' | 79 sq ft  
Utility: 11'1" x 8'8" | 74 sq ft

### Floor Area Information

For explanation of floor area calculations and method of measurement please see <https://youriguide.com/measure/>. All displayed floor areas are rounded to nearest integer. Total area is computed before rounding and may not equal to sum of displayed floor areas.

#### Main Building

##### MAIN FLOOR

Interior Area: 570 sq ft  
Perimeter Wall Length: 95 ft  
Perimeter Wall Thickness: 6.0 in  
Exterior Area: 618 sq ft

##### 2ND FLOOR

Interior Area: 544 sq ft  
Perimeter Wall Length: 98 ft  
Perimeter Wall Thickness: 6.0 in  
Exterior Area: 593 sq ft

##### LOWER FLOOR

Interior Area: 460 sq ft  
Perimeter Wall Length: 95 ft  
Perimeter Wall Thickness: 6.0 in  
Exterior Area: 507 sq ft

##### BASEMENT (Below Grade)

Interior Area: 496 sq ft  
Perimeter Wall Length: 110 ft  
Perimeter Wall Thickness: 8.0 in  
Exterior Area: 569 sq ft

### Total Above Grade Floor Area

Main Building Interior: 1574 sq ft

# 32 Bermondsey Ct NW, Calgary, AB

---

## Property Details

### Room Measurements

### Floor Area Information

Main Building Exterior: 1718 sq ft