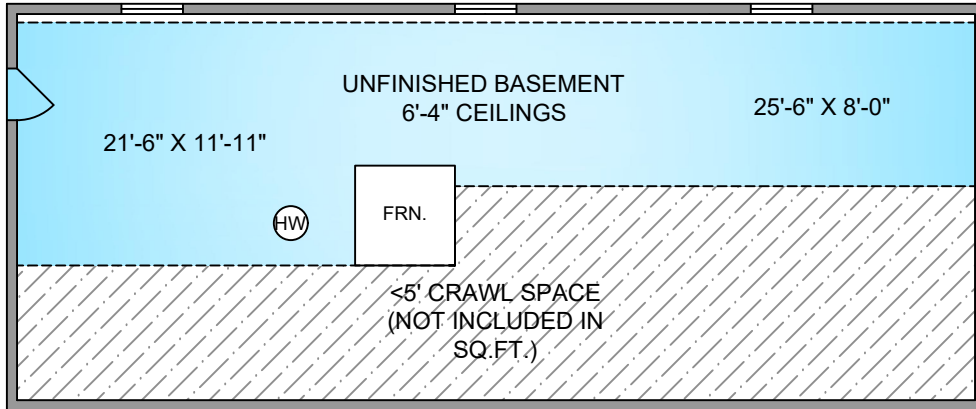


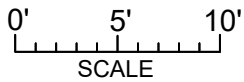
2517 DUNSMUIR AVE.

3187 SQ. FT.
(+496 SQ.FT. GARAGE)

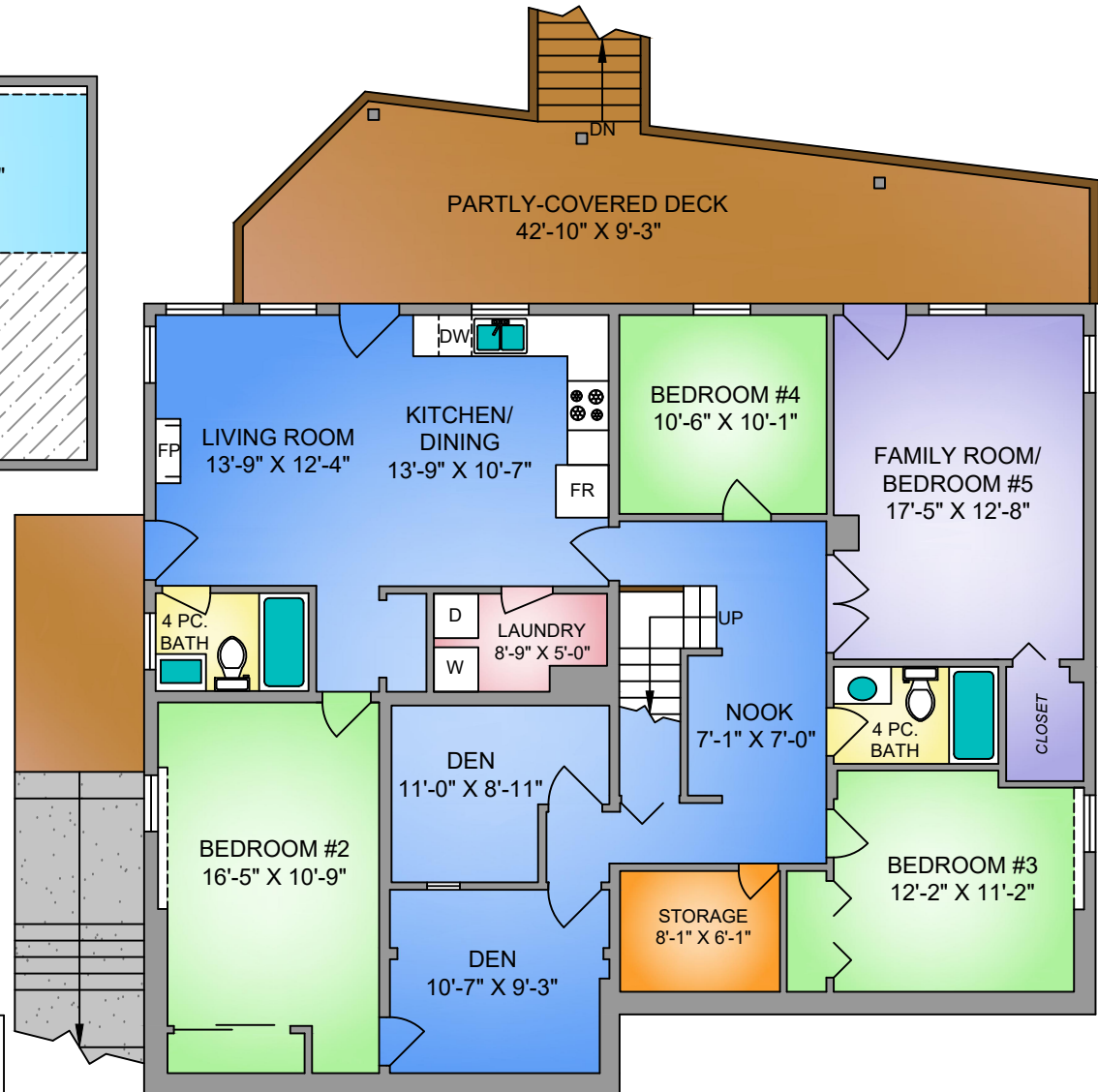


UNFINISHED BASEMENT
514 SQ. FT.

NORTH



LOWER FLOOR
1829 SQ. FT.
8'-5" CEILING



2517 DUNSMUIR AVE.
APRIL 22, 2021

Prepared by PROPER MEASURE NORTH ISLAND for the exclusive use of COURTNEY & ANGLIN REAL ESTATE GROUP
Plans may not be 100% accurate. Buyer must verify any critical measurement.
Private resale or modification of floor plans to a third party by any individual or entity other than Proper Measure North Island is strictly prohibited

FLOOR	AREA (SQ. FT.)			
	FINISHED SQ.FT.	UNFINISHED SQ.FT.	GARAGE	DECK/PATIO
MAIN	1358	-	469	385
LOWER	1829	-	-	449
BASEMENT	-	514	-	-
TOTAL	3187	514	469	834