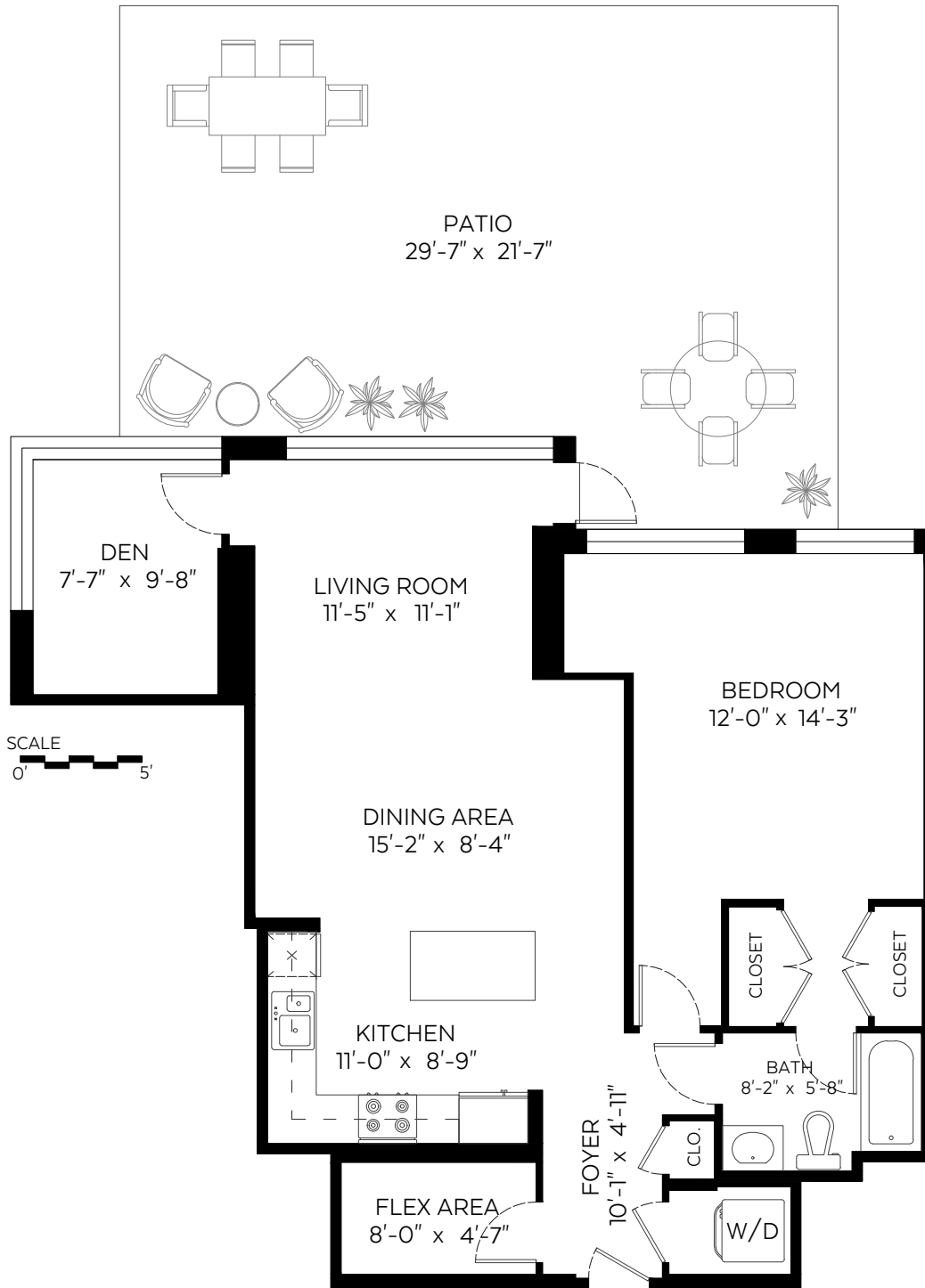


Main Floor:	993 sq.ft.
Ceiling Height:	10'-10"

Auxiliary Area

Balcony:	565 sq.ft.
----------	------------



Valid Until: March 07, 2022

The floor plan is not suitable for architectural/construction and is covered under E&O. © Excelsior Measuring Inc. 2019. All rights reserved for Excelsior Measuring Inc. Users shall not publish and distribute such material (in whole or in part) and/or incorporate it in other works in any form.