

# SHIRLEY LOUIE

604-307-8867 | shirley@louierealty.com  
www.louierealty.com

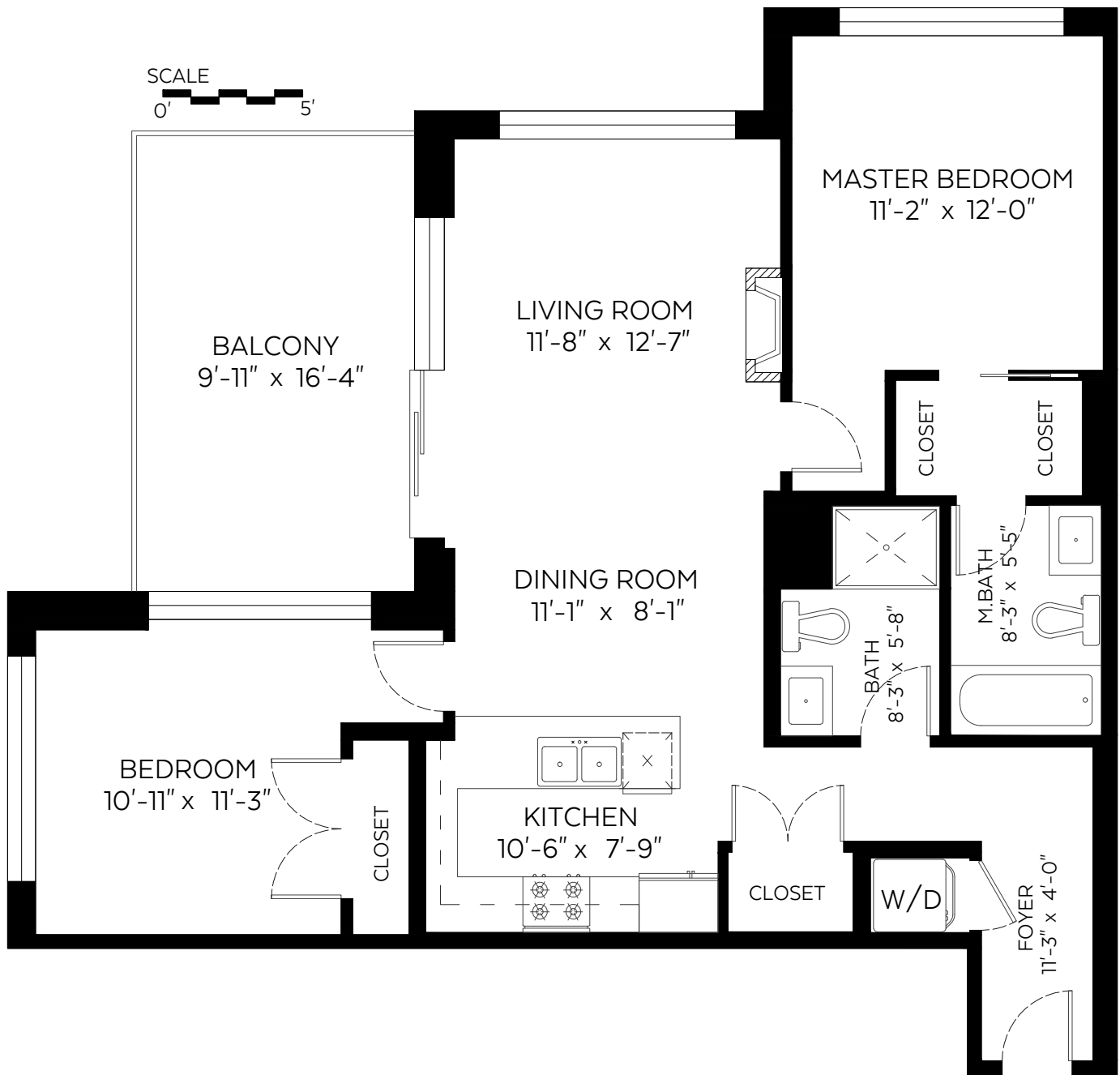
#2002-280 Ross Drive,  
New Westminster, B.C.

Main Floor: 1,011 sq.ft.

Ceiling Height: 8'-8"

### Auxiliary Area

Balcony: 162 sq.ft.



Measured on: October 02, 2020

The floor plan is not suitable for architectural/construction and is covered under E&O. © Excelsior Measuring Inc. 2019. All rights reserved for Excelsior Measuring Inc. Users shall not publish and distribute such material (in whole or in part) and/or incorporate it in other works in any form.

