



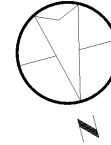
# Ann Watley, Personal Real Estate Corporation

ann@annwatley.com <http://www.annwatley.com>  
Office: (250) 656-3486 Direct: (250) 656-3486



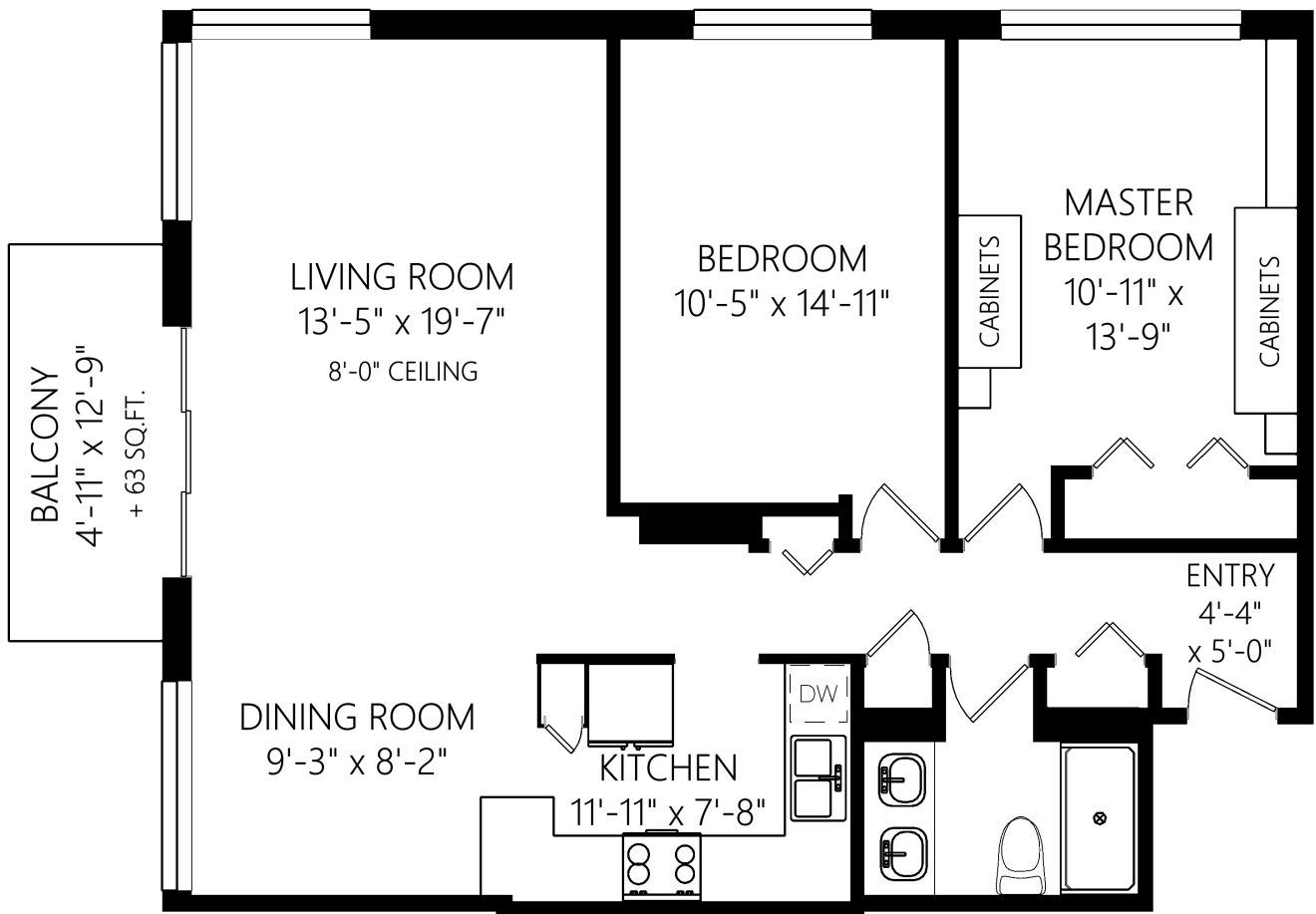
Pemberton Holmes Real Estate Ltd  
107-2360 Beacon Avenue  
Sidney, BC V8L 1X3

1003-250 Douglas St



## SINGLE LEVEL

1003 FINISHED SQ.FT.  
+ ADDNL. SQ.FT. WHERE NOTED



	Fin. Sq.Ft.	UnFin. Sq.Ft.	Total Sq.Ft.
Single Level	1003	0	1003
<b>Total</b>	<b>1003</b>	<b>0</b>	<b>1003</b>

Shown length and width dimensions are approximate.  
Area sq.ft. is representative of the on-site measurements. (1" accuracy)



Figures, Calculations, and Representations are for indicative and promotional purpose only.  
VI Standard Real Estate Services Inc. will not be liable for any damages of any kind arising from the mis-use of this information.