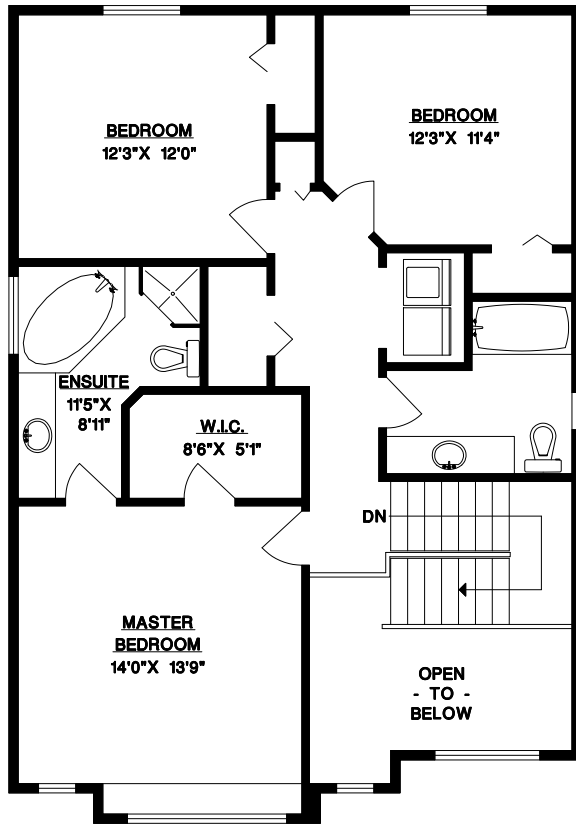


**UPPER FLOOR**

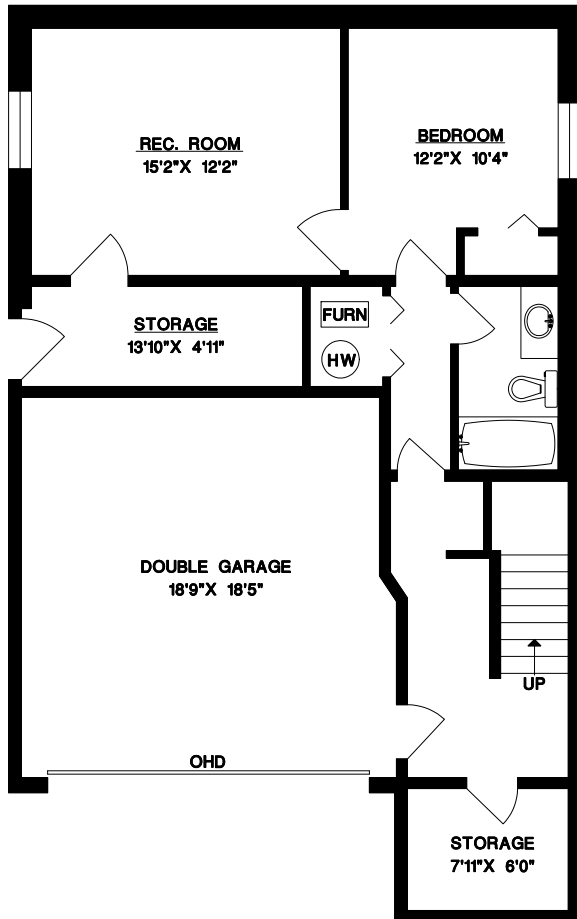


**23635 11A AVENUE  
MAPLE RIDGE, B.C.**

UPPER FLOOR	973 SQ. FT.
MAIN FLOOR	1115 SQ. FT.
BASEMENT	787 SQ. FT.
<b>TOTAL</b>	<b>2875 SQ. FT.</b>

GARAGE	363 SQ. FT.
PORCH	58 SQ. FT.
PATIO	119 SQ. FT.

**BASEMENT**



**MAIN FLOOR**

