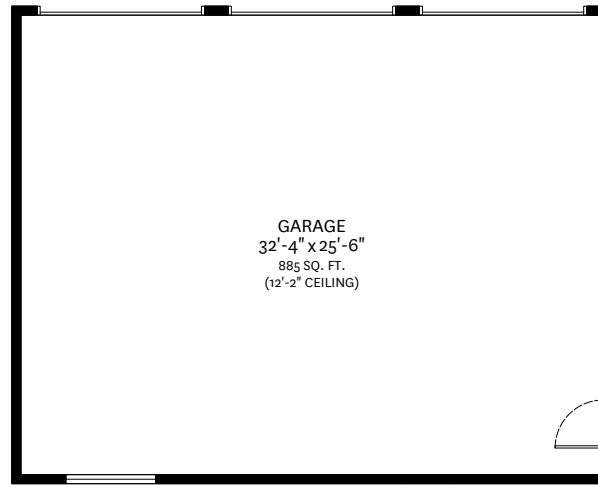
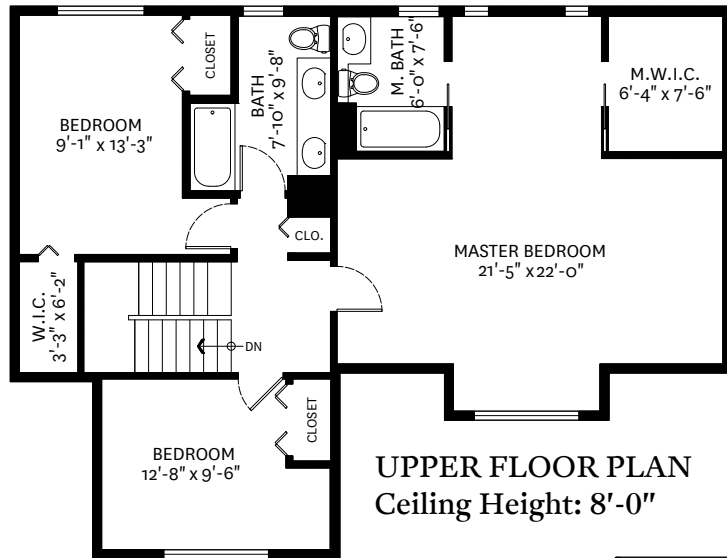
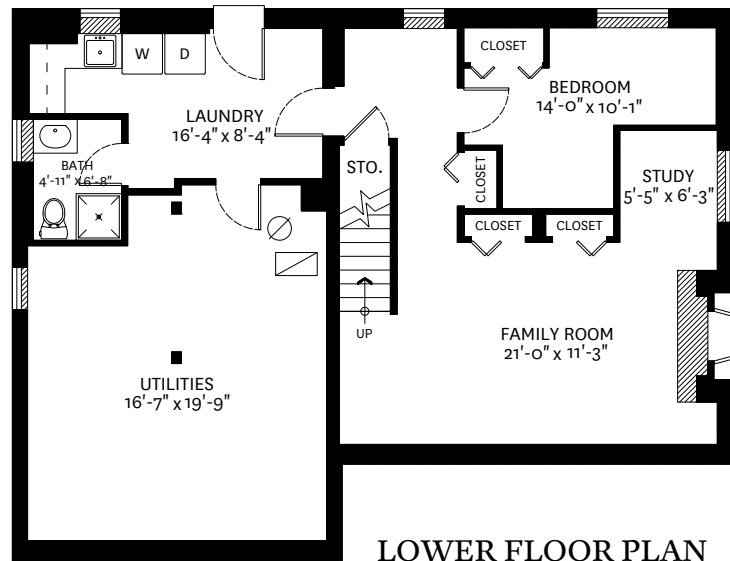
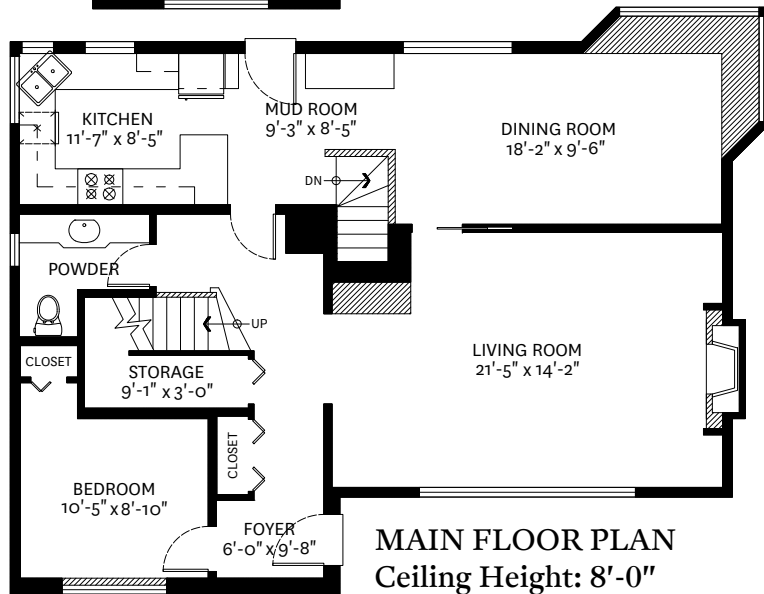


5682 Gilpin Street, Burnaby, BC



Upper Floor: 985 SQ. FT.
Main Floor: 1114 SQ. FT.
Lower Floor: 1114 SQ. FT.
Total: 3213 SQ. FT.

Garage: 885 SQ. FT.



Nelson Jordaan
604-644-6466
njordaan@macrealty.com

floor plan designed by
ishot.ca Enterprises Inc.
604-368-7979
<http://ishot.ca>