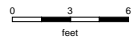
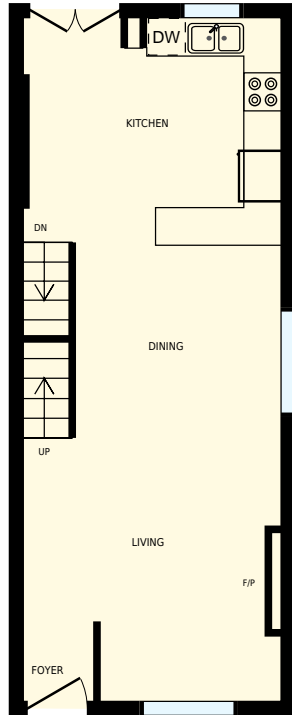


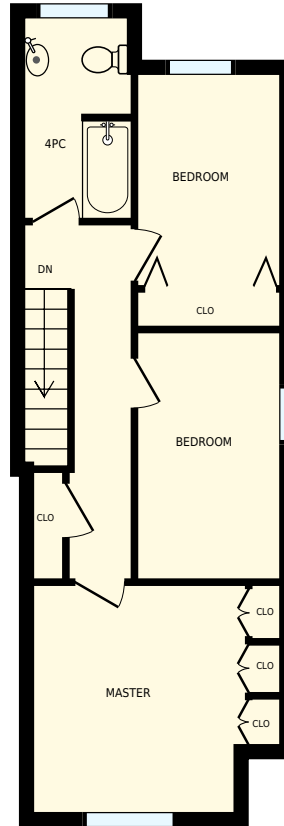


116 Douglas Ave, Toronto, ON

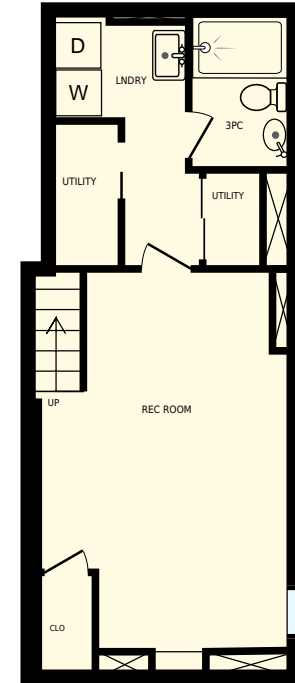
Total Exterior Area Above Grade 1138 sq. ft



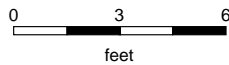
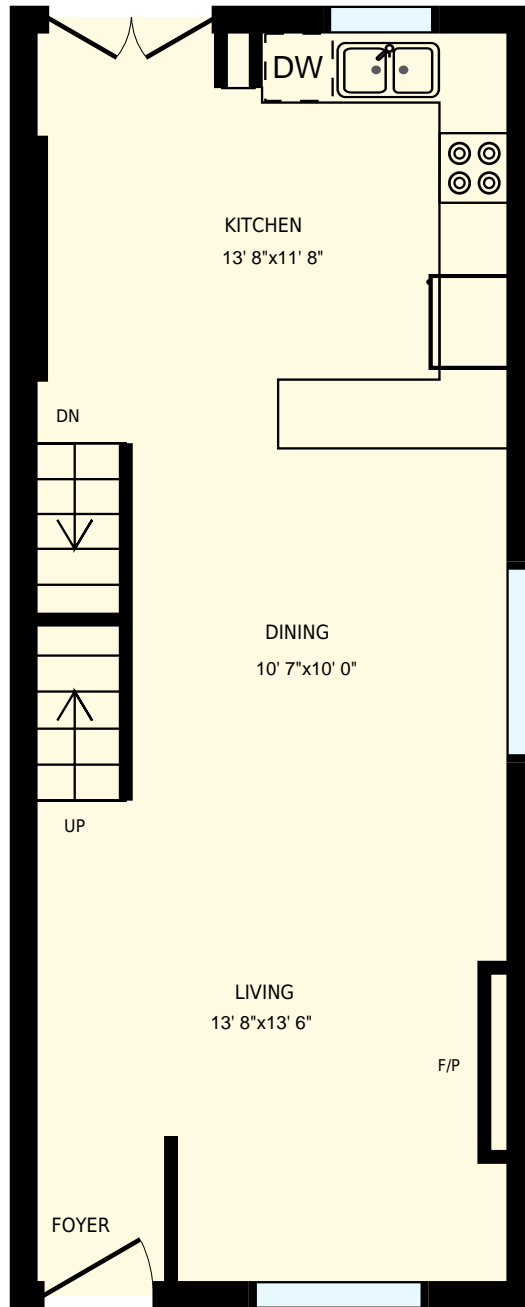
Main floor
Exterior Area 548 sq. ft



2nd floor
Exterior Area 590 sq. ft



Basement

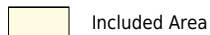


116 Douglas Ave, Toronto, ON

PREPARED FOR:
Marian Keriakos
Broker
Chesnut Park Real Estate, Brokerage

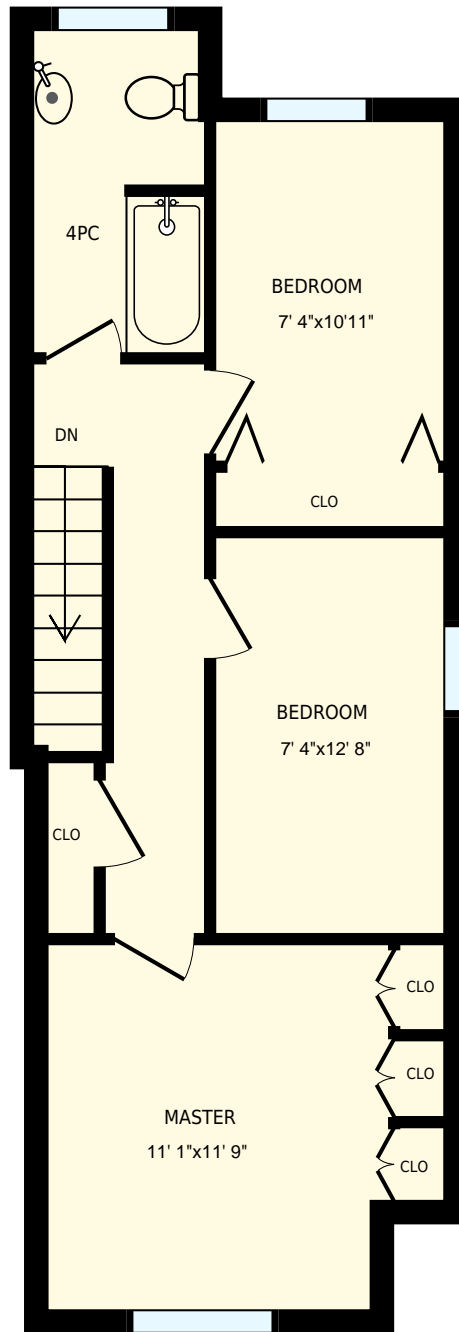
Main floor

Interior Area 492 sq. ft
Exterior Area 548 sq. ft



PREPARED ON:
Jun, 2016

All rooms dimensions and floor areas must be considered approximate and are subject to independent verification. For method of measurement please see <http://youriguide.com/measure/>.




116 Douglas Ave, Toronto, ON

PREPARED FOR:
 Marian Keriakos
 Broker
 Chesnut Park Real Estate, Brokerage

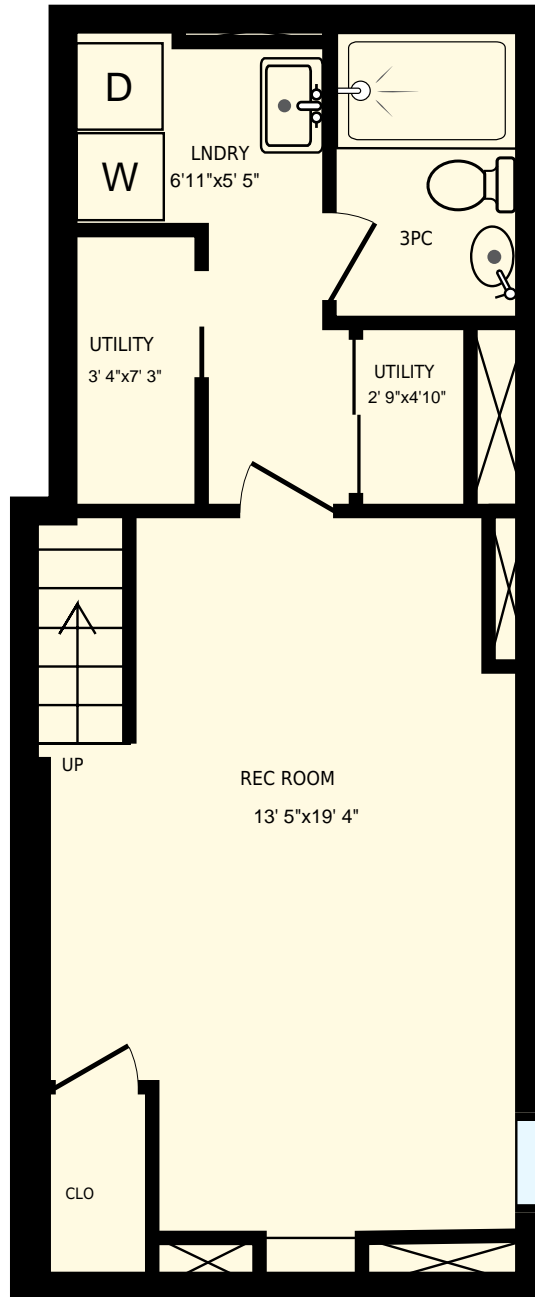
2nd floor

Interior Area 529 sq. ft
 Exterior Area 590 sq. ft

 Included Area

PREPARED ON:
 Jun, 2016

All rooms dimensions and floor areas must be considered approximate and are subject to independent verification. For method of measurement please see <http://youriguide.com/measure/>.




116 Douglas Ave, Toronto, ON

PREPARED FOR:
Marian Keriakos
Broker
Chesnut Park Real Estate, Brokerage

Basement

Interior Area 442 sq. ft
Exterior Area

 Included Area

PREPARED ON:
Jun, 2016

All rooms dimensions and floor areas must be considered approximate and are subject to independent verification. For method of measurement please see <http://youriguide.com/measure/>.