

SUBDIVISION PLAN OF PART OF  
 LOT 1 SECTION 24 TOWNSHIP 3 RANGE 30  
 WEST OF THE SIXTH MERIDIAN  
 NEW WESTMINSTER DISTRICT PLAN BCP35699

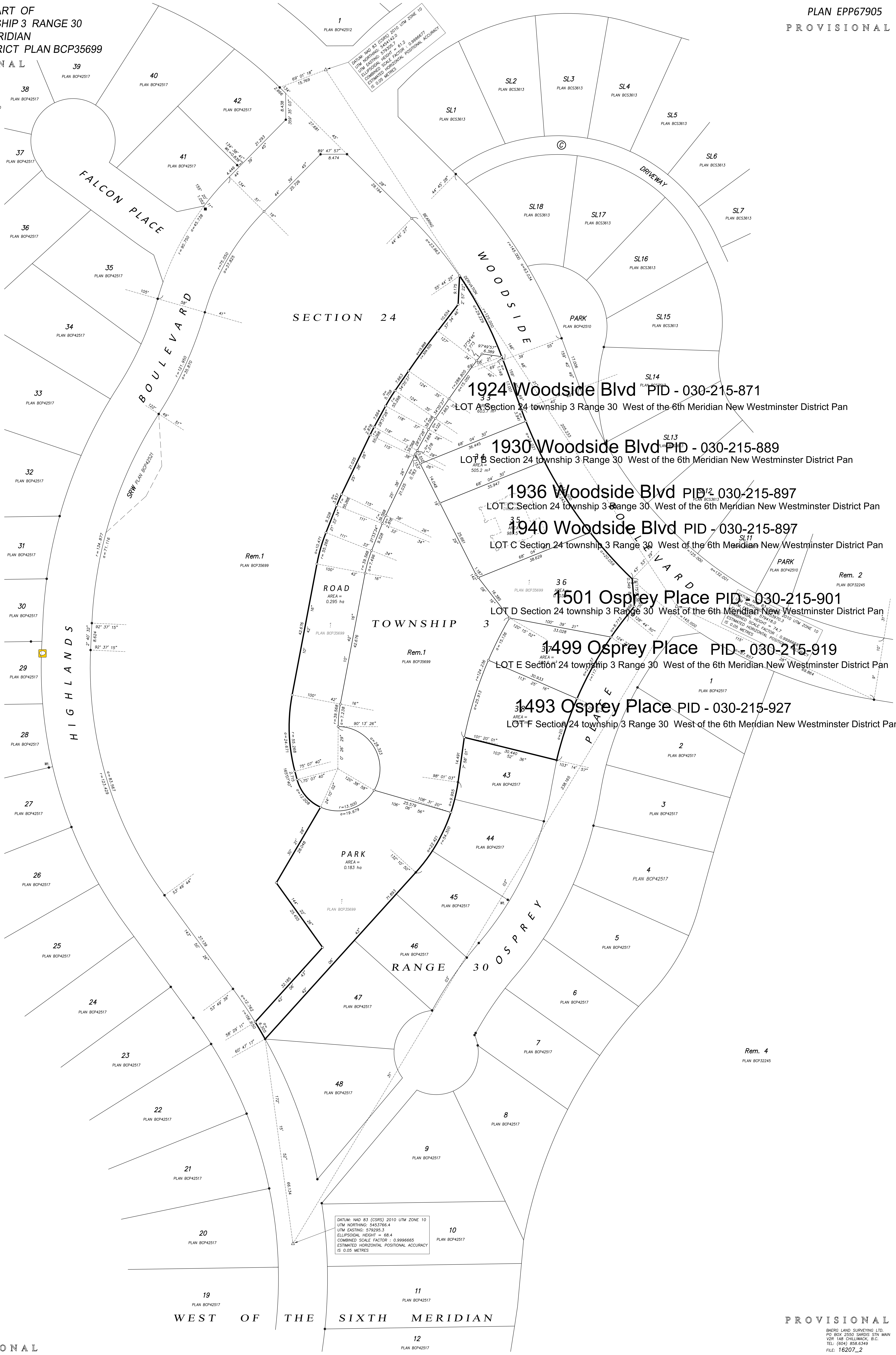
PLAN EPP67905  
 PROVISIONAL

BCGS 92H.021 PROVISIONAL

SCALE 1 : 400  
 0 20 40 m  
 DIMENSIONS ARE SHOWN IN METRES.  
 THE INTENDED PLOT SIZE OF THIS PLAN IS 864mm IN WIDTH  
 BY 1120mm IN HEIGHT (E SIZE) WHEN PLOTTED AT A SCALE OF 1:400

LEGEND:  
 FOUND PLACED  
 ○ DENOTES STANDARD IRON POST  
 ● DENOTES LEAD PLUG  
 △ DENOTES GNSS TRAVERSE HUB

GRID BEARINGS ARE DERIVED FROM GNSS OBSERVATIONS AND  
 ARE REFERRED TO THE CENTRAL MERIDIAN OF UTM ZONE 10.  
 THE UTM COORDINATES AND ESTIMATED HORIZONTAL  
 POSITIONAL ACCURACY ACHIEVED ARE DERIVED FROM GNSS  
 OBSERVATIONS TO THE SMARTNET REFERENCE STATION  
 NETWORK.  
 THIS PLAN SHOWS HORIZONTAL GROUND-LEVEL DISTANCES,  
 UNLESS OTHERWISE SPECIFIED, TO COMPUTE GRID DISTANCES.  
 MULTIPLY GROUND-LEVEL DISTANCES BY THE APPROPRIATE  
 COMBINED FACTOR AS DERIVED FROM THE COMBINED FACTORS  
 NOTED IN THE COORDINATE TABLE.



DATUM: NAD 83 (CSRS) 2010 UTM ZONE 10  
 UTM NORTHING: 5453766.4  
 UTM EASTING: 579295.3  
 ELLIPSOIDAL HEIGHT = 68.4  
 COMBINED SCALE FACTOR : 0.9996665  
 ESTIMATED HORIZONTAL POSITIONAL ACCURACY  
 IS 0.05 METRES

NOTE 1: \_\_\_\_\_  
 NOTE 2: \_\_\_\_\_  
 NOTE 3: \_\_\_\_\_  
 THIS PLAN SHOWS ONE OR MORE WITNESS POSTS  
 WHICH ARE NOT SET ON THE TRUE CORNERS.  
 COVENANTS IN THE NAME OF THE CITY OF CHILLIWACK  
 PURSUANT TO SECTION 219 OF THE LAND TITLE ACT ARE  
 CONDITIONS OF APPROVAL FOR THIS SUBDIVISION.  
 THIS PLAN LIES WITHIN THE JURISDICTION OF THE APPROVING  
 OFFICER FOR THE DISTRICT OF KENT.  
 THIS PLAN LIES WITHIN THE FRASER VALLEY REGIONAL DISTRICT.  
 THE FIELD SURVEY REPRESENTED BY  
 THIS PLAN WAS COMPLETED ON THE  
 04th DAY OF NOVEMBER, 2016  
 GEORGE BAERG, BOLS 306

PROVISIONAL  
 BAERG LAND SURVEYING LTD.  
 P.O. BOX 2550 SARDIS STN MAIN  
 V2R 1A8 CHILLIWACK, B.C.  
 TEL: (604) 858-6349  
 FILE: 16207\_2